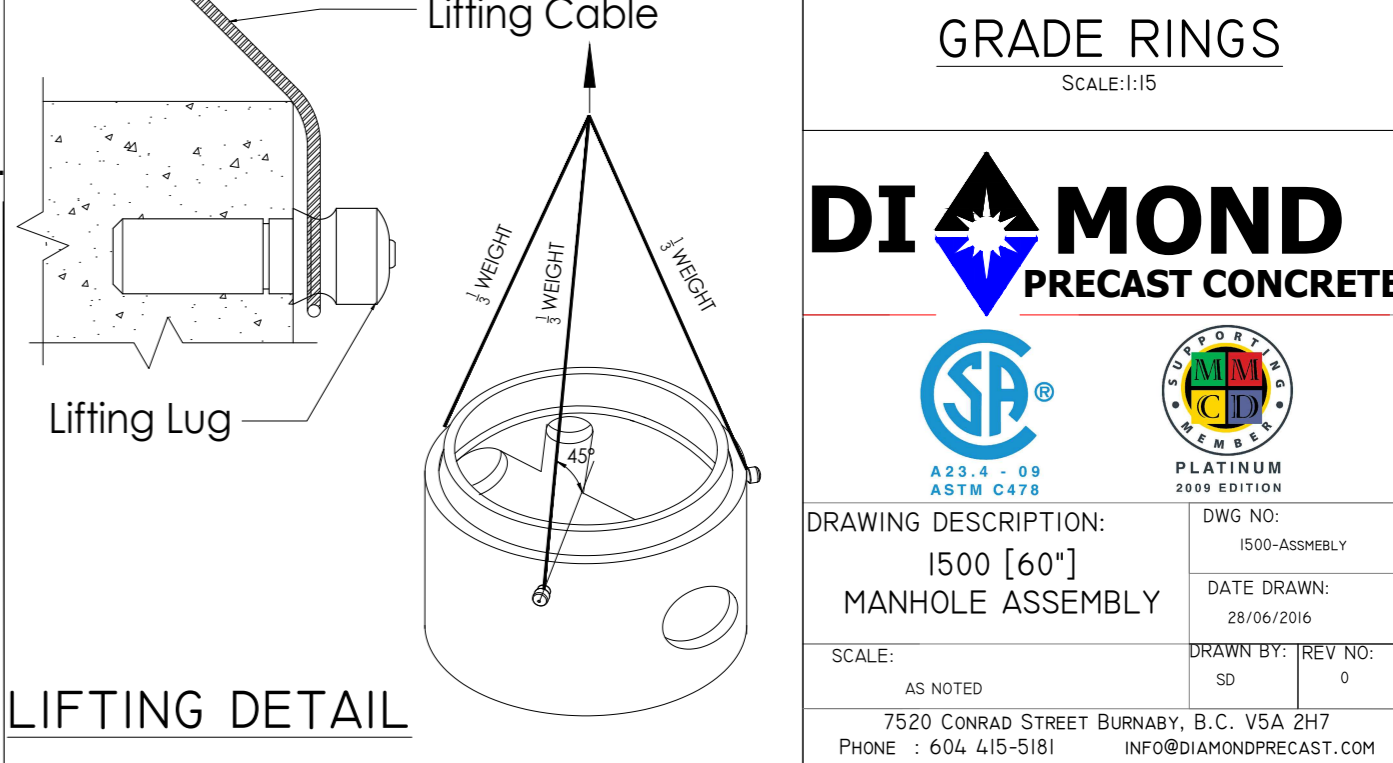
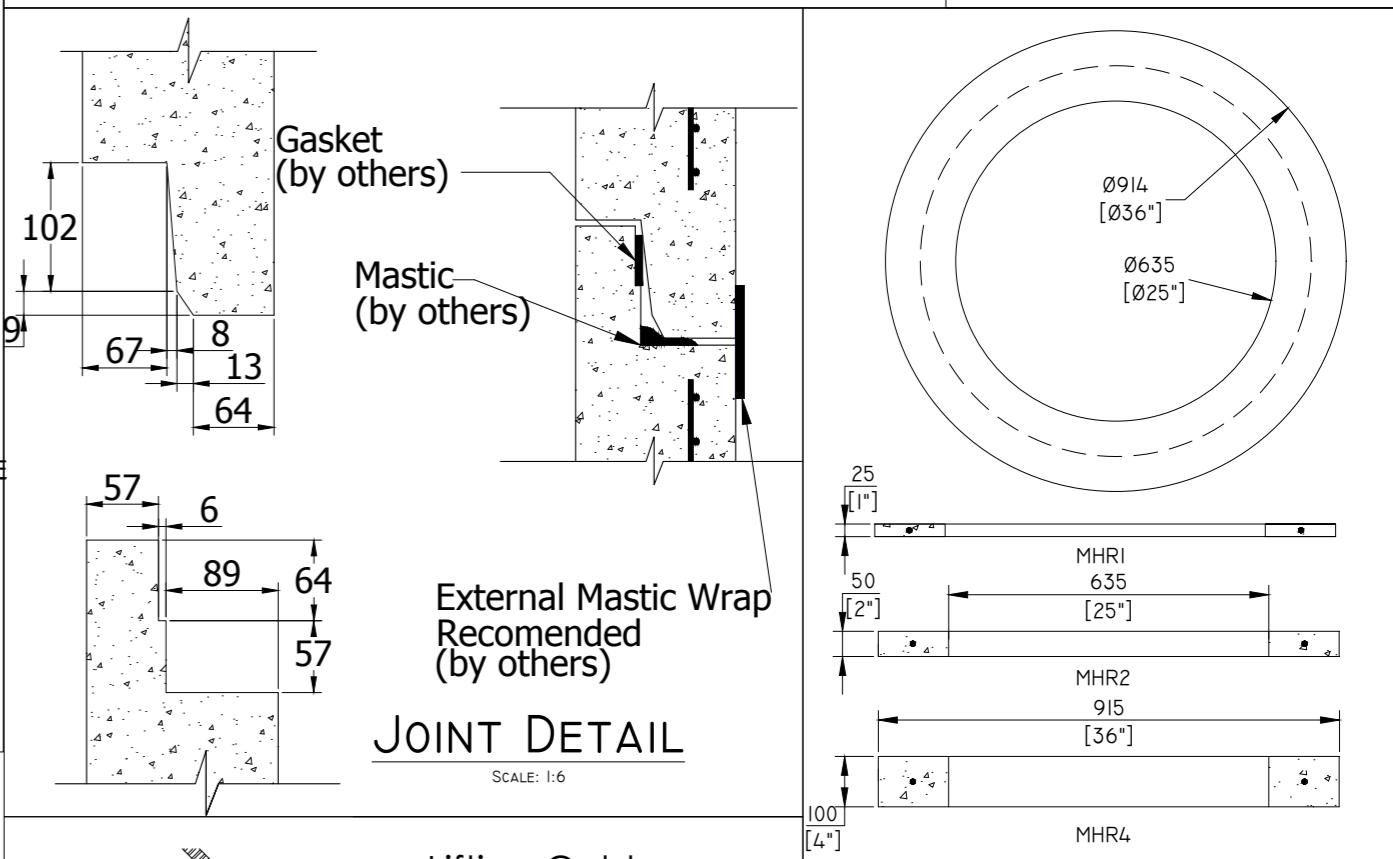
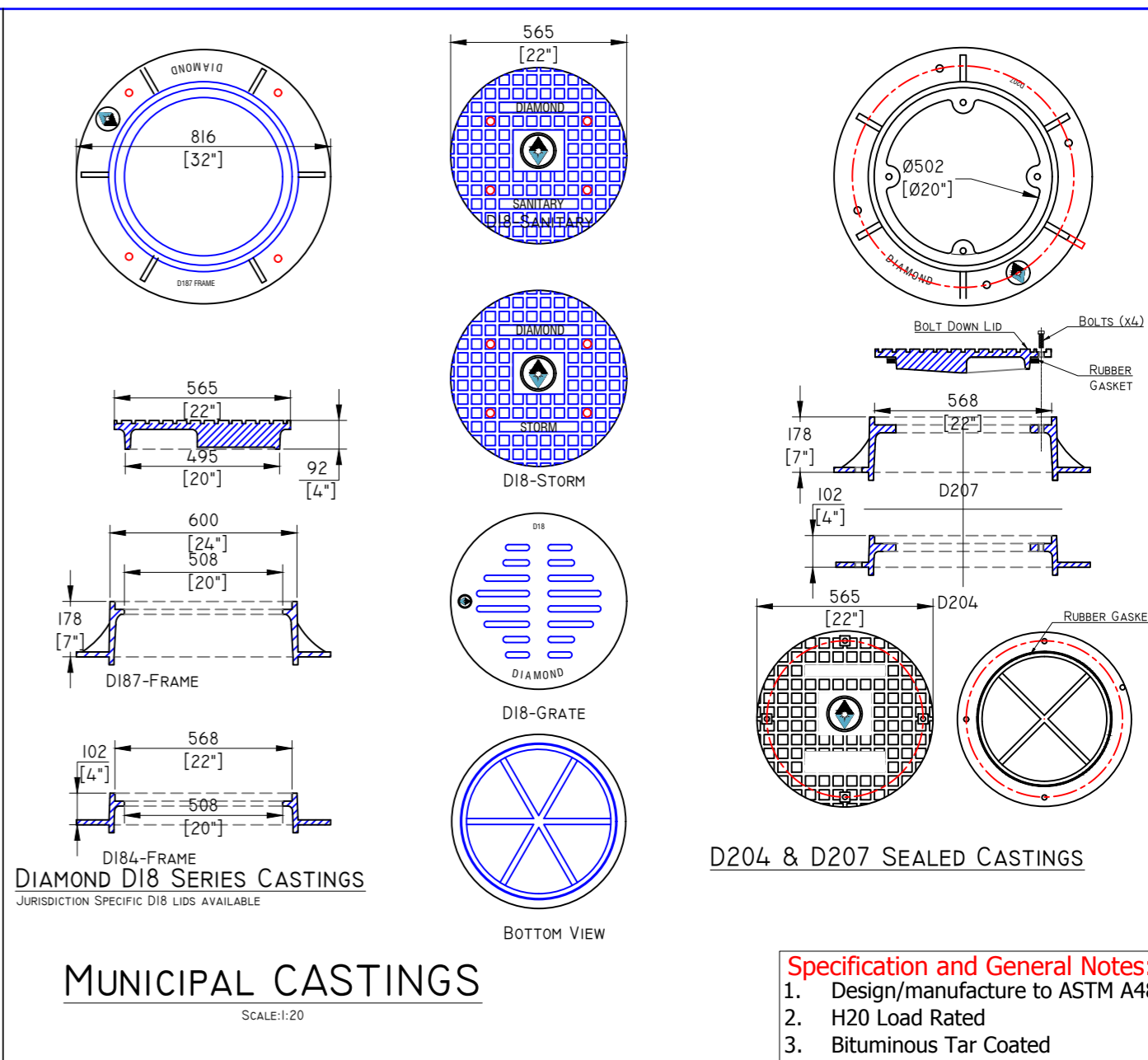


- Precast Concrete Component Specifications and General Notes:**
- All components MMCD PLATINUM (Section 33 44 01) compliant and fabricated to CSA CERTIFICATE OF COMPLIANCE (ASTM C478M)
  - All jurisdiction-specific components SUPPLEMENTAL to MMCD PLATINUM fabricated in accordance with CSA CERTIFICATE OF QUALIFICATION (CSA A23.4-09).
  - Components certified to CSA standards (ASTM C478M & CSA A23.4-09) by approved independent third party certification body accredited by Standards Council of Canada.
  - All components marked with certification body logo and CSA standard markings.
  - Testing to ASTM C497/CSA 23.1 & 2-09.
  - 30 MPa MIN compressive strength (MAX 0.5 W/C ratio).
  - Gasket Joint Seal (ASTM C923M).
  - 25mm MIN concrete cover of reinforcing steel.
  - All dimensions in MILLIMETERS (mm).
  - 300mm welded wire mesh overlap.
  - 5mm manufacturing tolerance.
  - A-3 concrete exposure class.
  - 15MPa MIN stripping strength.
  - Standard grade form finish.
  - Unformed steel trowel or wood float finish.
  - Rigging to meet WORK SAFE BC OHS (Guideline 14/15) requirement (see LIFTING DETAIL).
  - Field installation and testing by others.



**DIAMOND**  
PRECAST CONCRETE

**SA** A23.4 - 09  
ASTM C478

**PLATINUM**  
2009 EDITION

DRAWING DESCRIPTION:  
1500 [60"]  
MANHOLE ASSEMBLY

DWG NO:  
1500-ASSMBLY

DATE DRAWN:  
28/06/2016

SCALE:  
AS NOTED

DRAWN BY: REV NO:  
SD 0

7520 CONRAD STREET BURNABY, B.C. V5A 2H7  
PHONE : 604 415-5181 INFO@DIAMONDPRECAST.COM