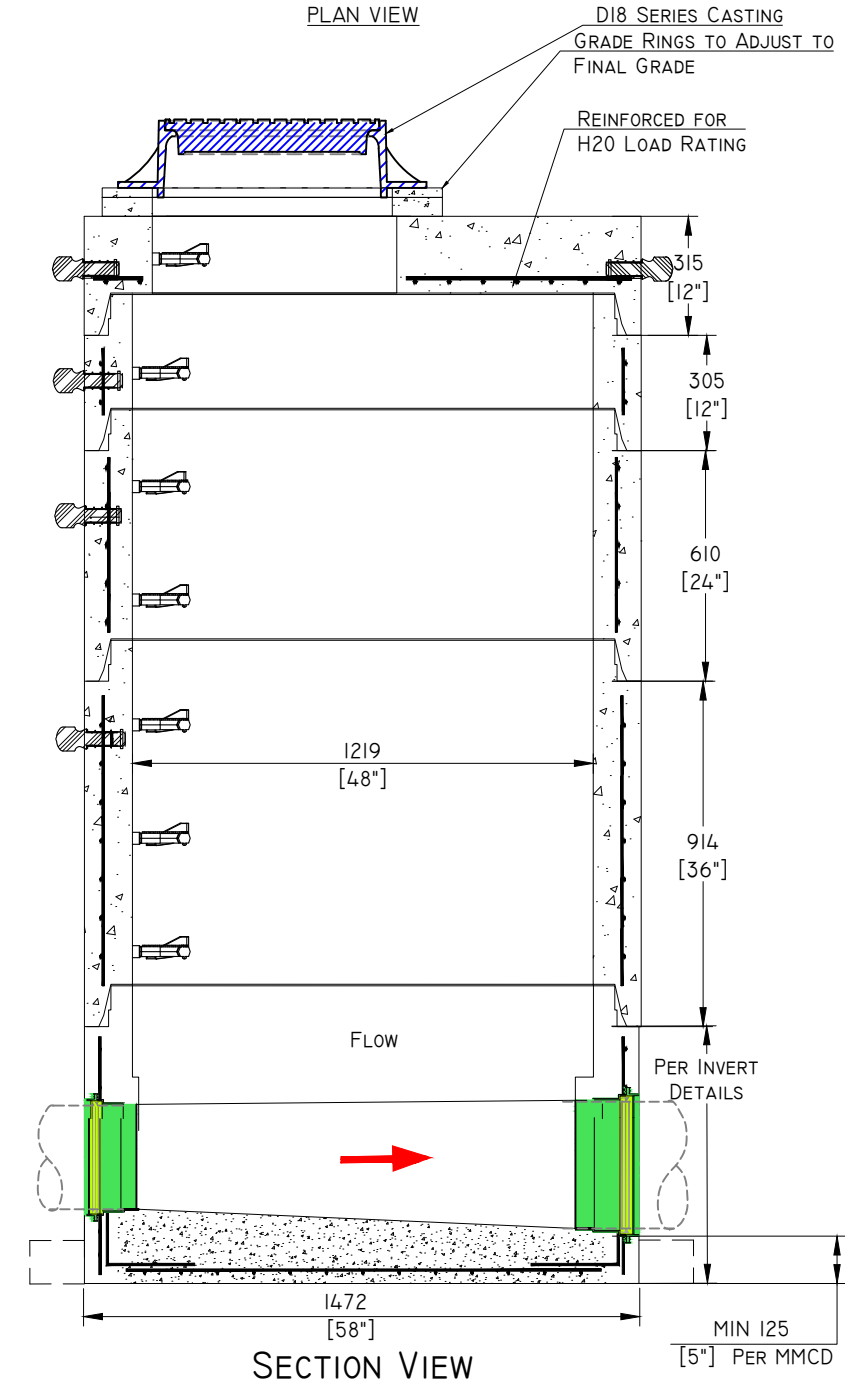
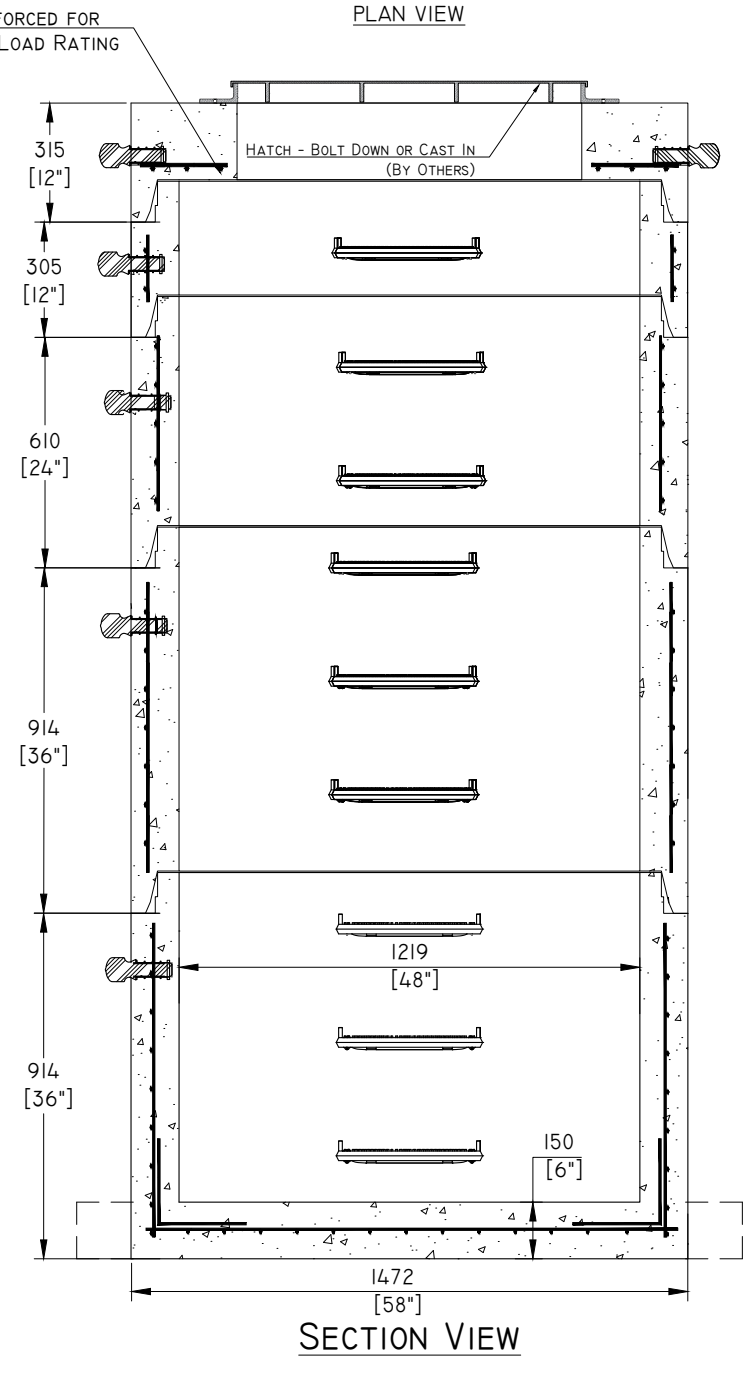


DONUT LID - OFFSET OPENING

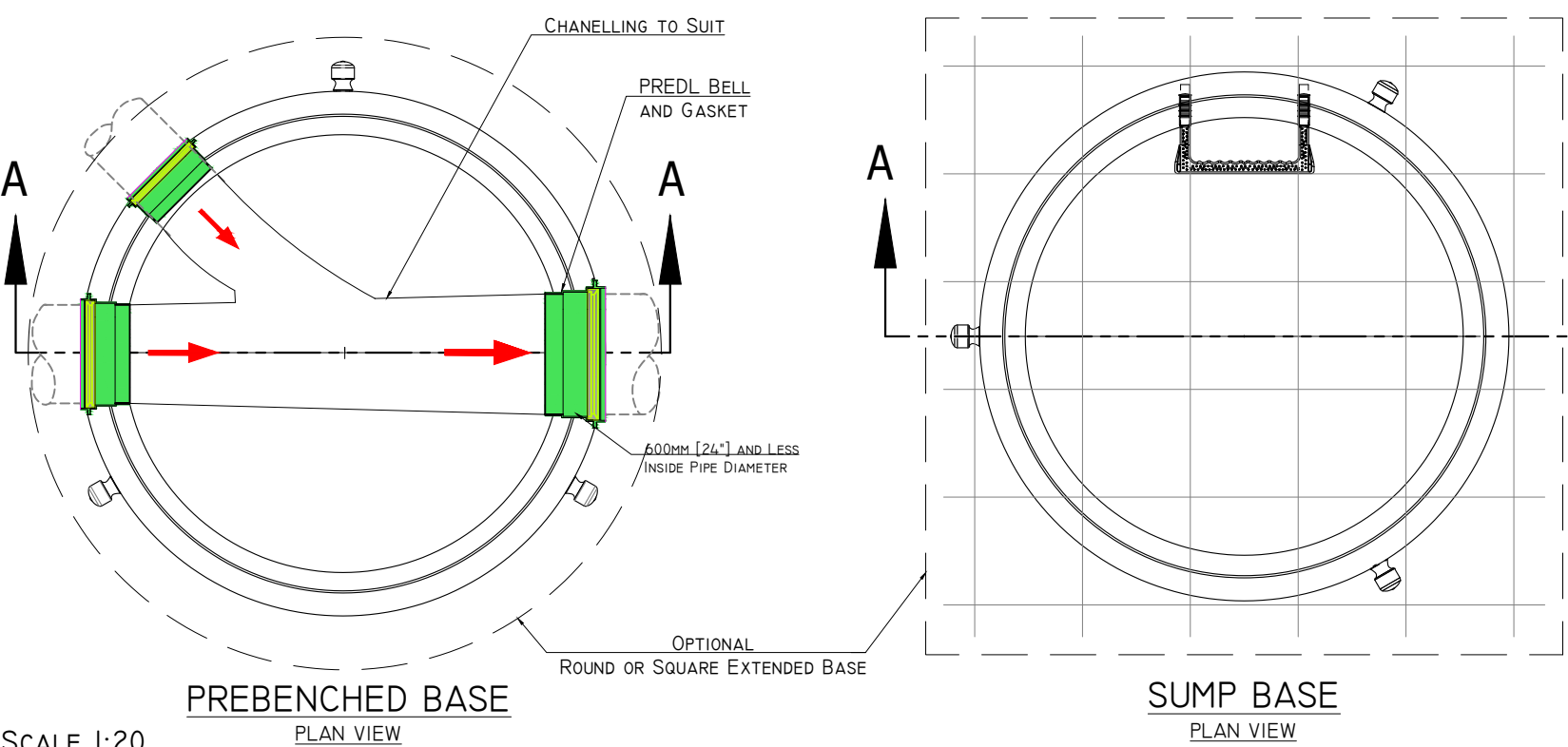
DONUT LID - HATCH OPENING



SECTION VIEW



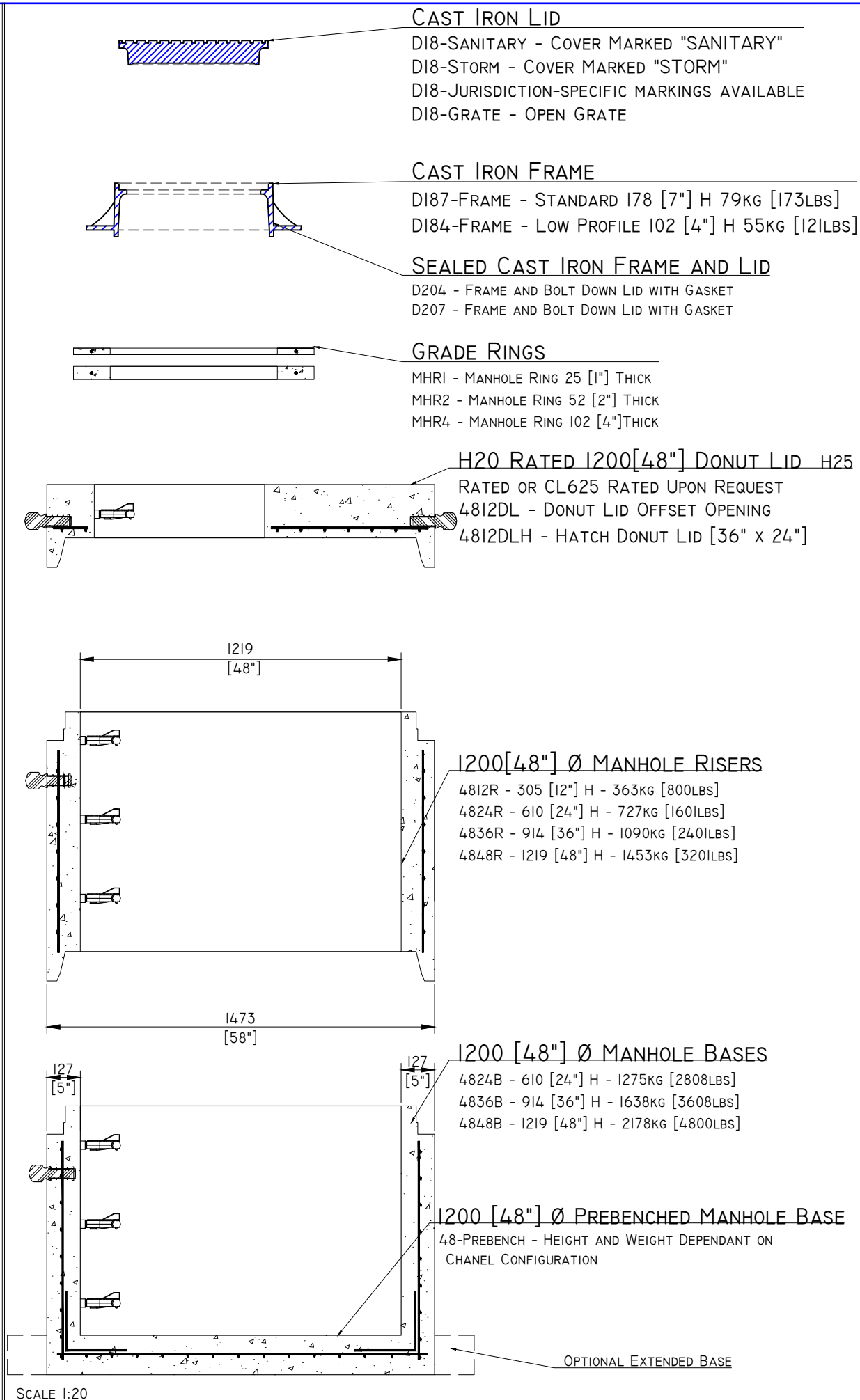
SECTION VIEW



PREBENCHED BASE

SUMP BASE

SCALE 1:20



CAST IRON LID
 D18-SANITARY - COVER MARKED "SANITARY"
 D18-STORM - COVER MARKED "STORM"
 D18-JURISDICTION-SPECIFIC MARKINGS AVAILABLE
 D18-GRATE - OPEN GRATE

CAST IRON FRAME
 D187-FRAME - STANDARD 178 [7"] H 79KG [173LBS]
 D184-FRAME - LOW PROFILE 102 [4"] H 55KG [121LBS]

SEALED CAST IRON FRAME AND LID
 D204 - FRAME AND BOLT DOWN LID WITH GASKET
 D207 - FRAME AND BOLT DOWN LID WITH GASKET

GRADE RINGS
 MHR1 - MANHOLE RING 25 [1"] THICK
 MHR2 - MANHOLE RING 52 [2"] THICK
 MHR4 - MANHOLE RING 102 [4"] THICK

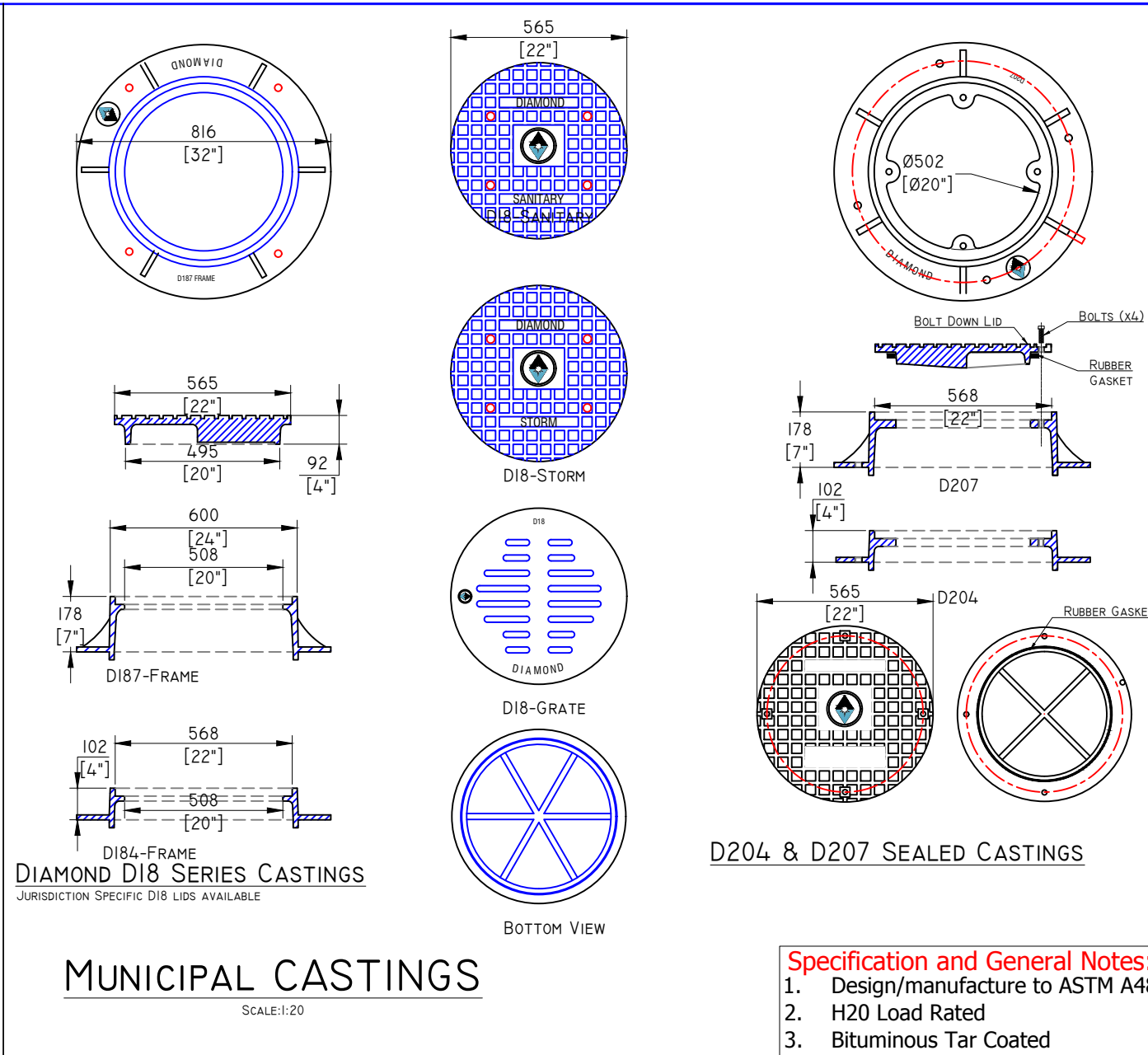
H20 RATED 1200[48"] DONUT LID - H25
 RATED OR CL625 RATED UPON REQUEST
 4.812DL - DONUT LID OFFSET OPENING
 4.812DLH - HATCH DONUT LID [36" x 24"]

1200[48"] Ø MANHOLE RISERS
 4.812R - 305 [12"] H - 363KG [800LBS]
 4.824R - 610 [24"] H - 727KG [1601LBS]
 4.836R - 914 [36"] H - 1090KG [2401LBS]
 4.848R - 1219 [48"] H - 1453KG [3201LBS]

1200 [48"] Ø MANHOLE BASES
 4.824B - 610 [24"] H - 1275KG [2808LBS]
 4.836B - 914 [36"] H - 1638KG [3608LBS]
 4.848B - 1219 [48"] H - 2178KG [4800LBS]

1200 [48"] Ø PREBENCHED MANHOLE BASE
 4.8-PREBENCH - HEIGHT AND WEIGHT DEPENDANT ON CHANEL CONFIGURATION

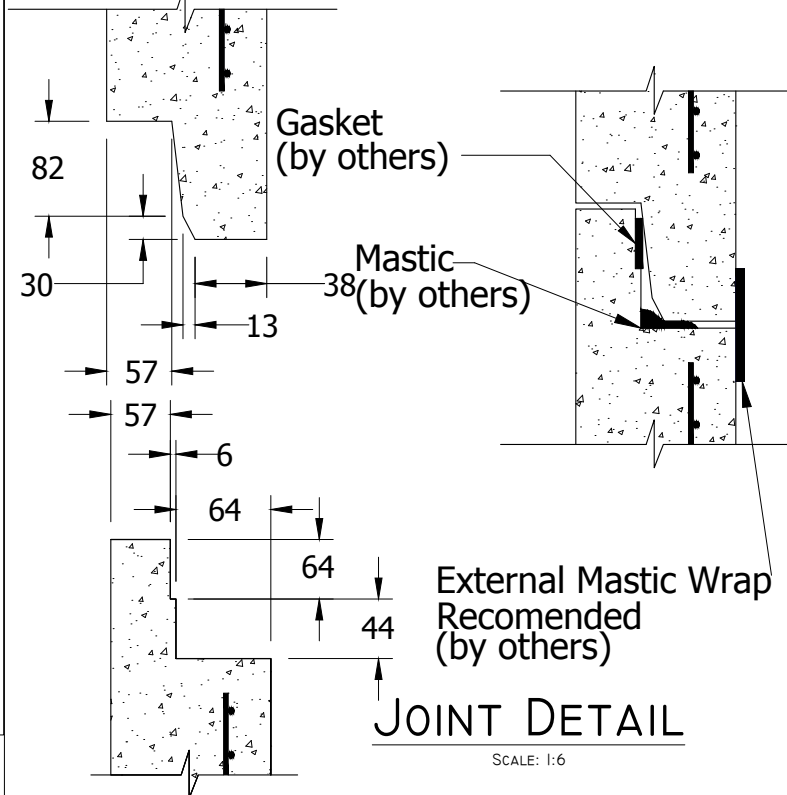
SCALE 1:20



MUNICIPAL CASTINGS

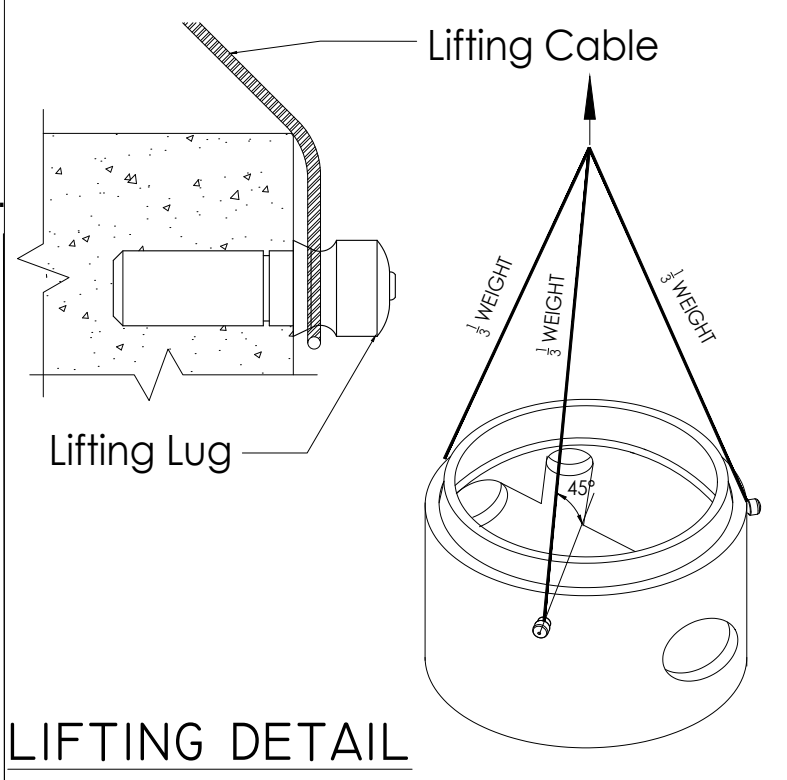
SCALE: 1:20

Specification and General Notes:
 1. Design/manufacture to ASTM A48
 2. H20 Load Rated
 3. Bituminous Tar Coated

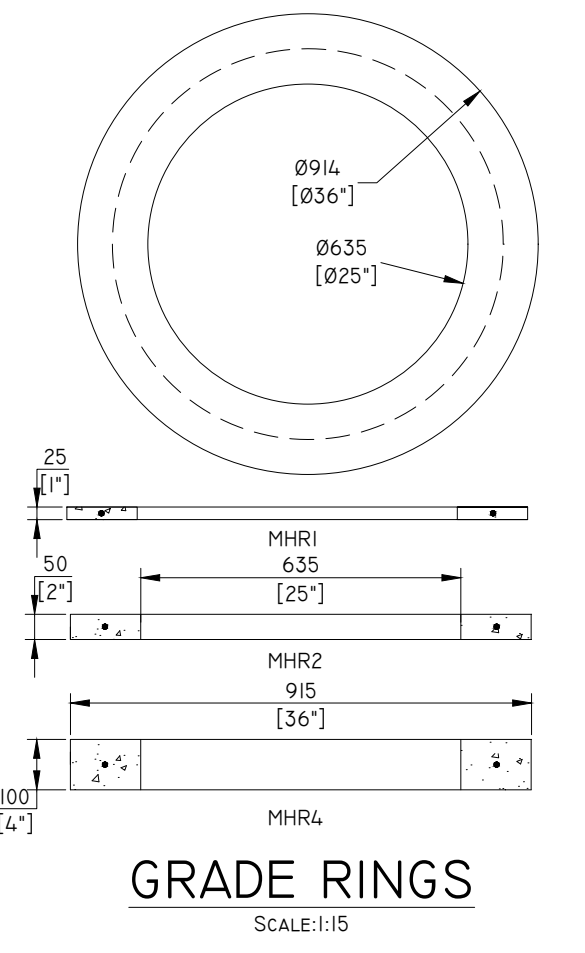


JOINT DETAIL

SCALE: 1:6



LIFTING DETAIL



GRADE RINGS

SCALE: 1:15

- Precast Concrete Component Specifications and General Notes:**
- All components MMCD PLATINUM (Section 33 44 01) compliant and fabricated to CSA CERTIFICATE OF COMPLIANCE (ASTM C478M)
 - All jurisdiction-specific components SUPPLEMENTAL to MMCD PLATINUM fabricated in accordance with CSA CERTIFICATE OF QUALIFICATION (CSA A23.4-09).
 - Components certified to CSA standards (ASTM C478M & CSA A23.4-09) by approved independent third party certification body accredited by Standards Council of Canada.
 - All components marked with certification body logo and CSA standard markings.
 - Testing to ASTM C497/CSA 23.1 & 2-09.
 - 30 MPa MIN compressive strength (MAX 0.5 W/C ratio).
 - Gasket Joint Seal (ASTM C923M).
 - 25mm MIN concrete cover of reinforcing steel.
 - All dimensions in MILLIMETERS (mm).
 - 300mm welded wire mesh overlap.
 - 5mm manufacturing tolerance.
 - A-3 concrete exposure class.
 - 15MPa MIN stripping strength.
 - Standard grade form finish.
 - Unformed steel trowel or wood float finish.
 - Rigging to meet WORK SAFE BC OHS (Guideline 14/15) requirement (see LIFTING DETAIL).
 - Field installation and testing by others.



DRAWING DESCRIPTION: 1200 [48"] MANHOLE ASSEMBLY		DWG NO: 1200-ASSEMBLY
SCALE: AS NOTED		DATE DRAWN: 28/06/2016
7520 CONRAD STREET BURNABY, B.C. V5A 2H7 PHONE : 604 415-5181		DRAWN BY: REV NO: SD 0