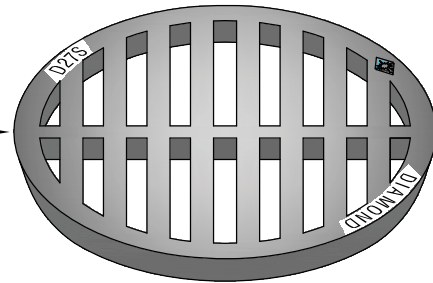


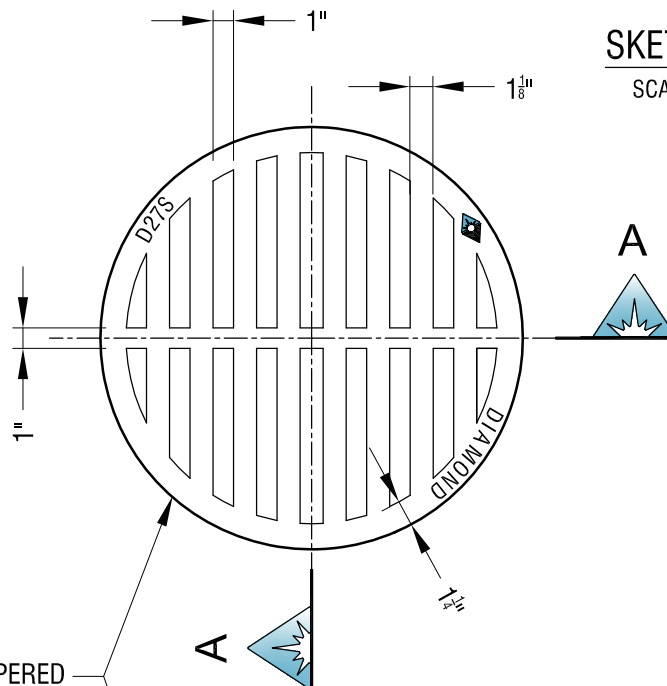
No. 6

D27S-GRATE - 18" GRATE TAPERED



SKETCH VIEW

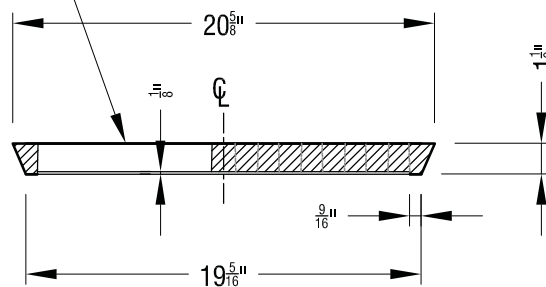
SCALE : N.T.S.



PLAN VIEW

SCALE : N.T.S.


D27S - 18" CAST GRATE TAPERED

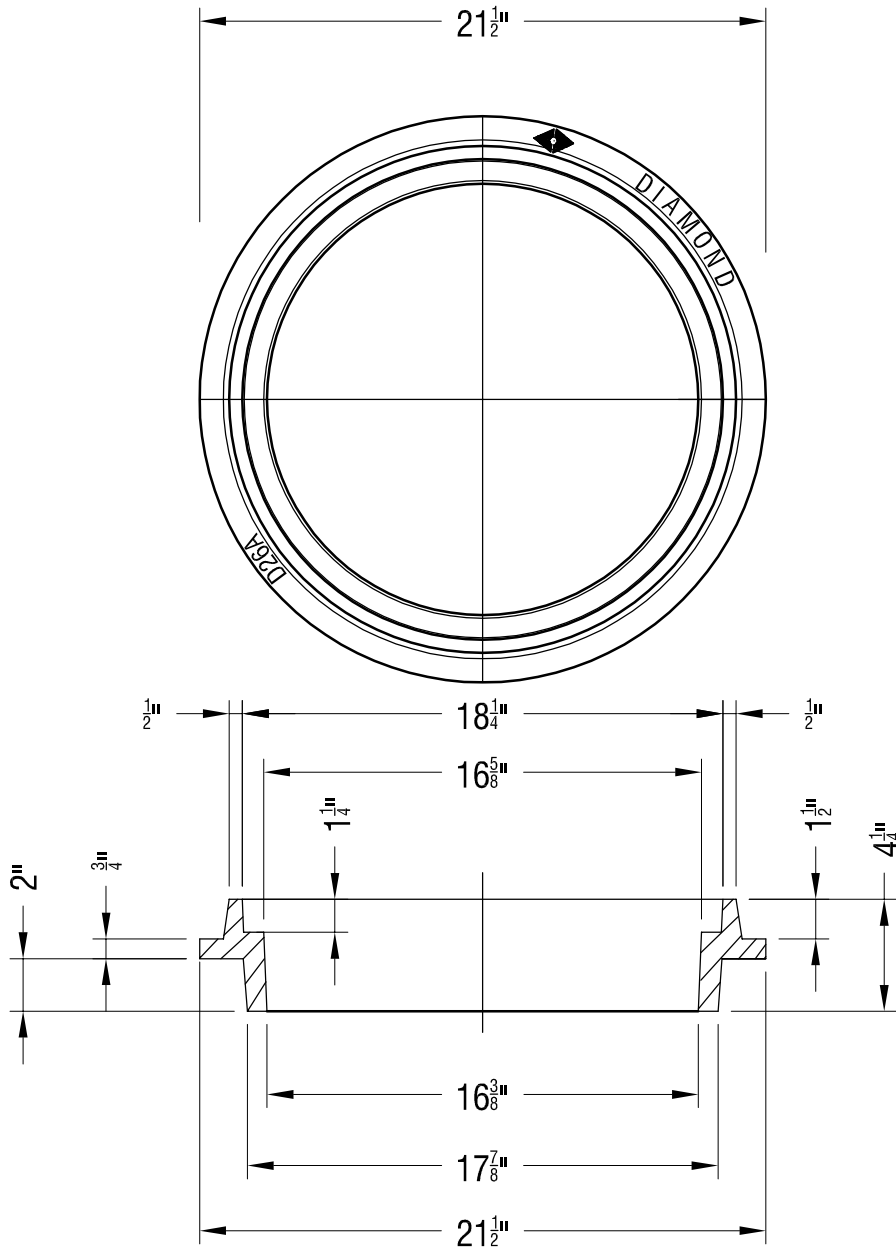


SECTION A-A

SCALE : N.T.S.

ESTIMATED WEIGHT - 69 LB

NOTES: FOR 450mm CONCRETE CB BARREL	 7520 Conrad Street Burnaby, B.C. V5A 2H7 Phone : 604 415-5181 Fax : 604 415-5185	DRAWN BY : R.H.	DATE : OCT. 15/13	PRODUCT: CASTING	DIAMOND ITEM NUMBER: D27S-GRATE
		APPROVED :	LOAD RATING H20	DESCRIPTION: 18" CAST GRATE TAPERED	DWG. NO.
MATERIAL SPECIFICATION	CAST IRON COATING: BITUMINOUS TAR COATED (UNCOATED ON REQUEST)	REVISION :	REV. NO.		SHEET NO. 1 OF 1
		SCALE : N.T.S.			



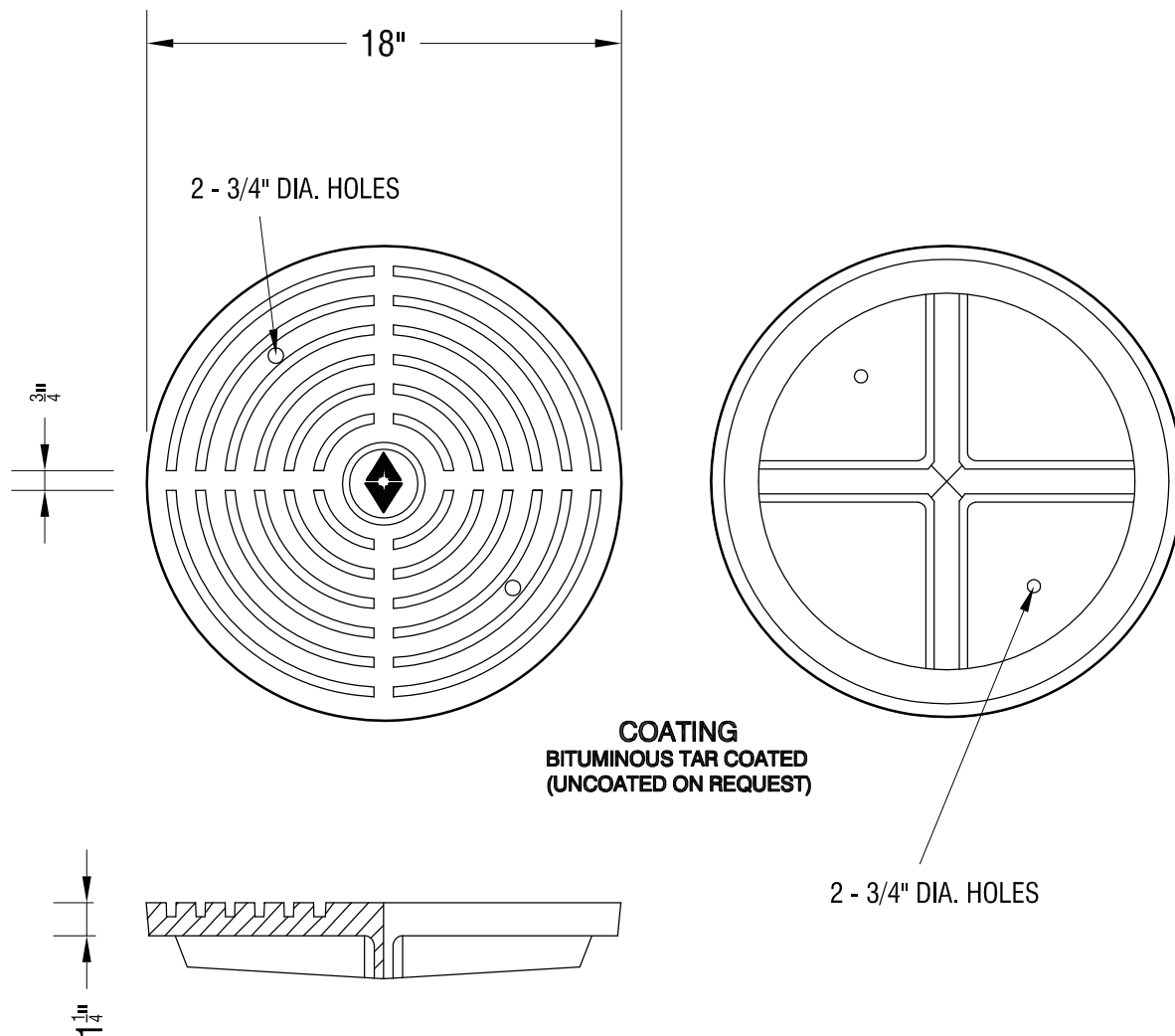
D26A Frame :- Cast Iron Frame for D26A Grate

TESTED AUG. 1, 2012 - PASSED H2O LOADING

SCALE: NOT TO SCALE

ESTIMATED WEIGHT - 62 LBS.

NOTES :	DIAMOND PRECAST CONCRETE 7520 Conrad Street Burnaby, B.C. V5A 2H7 Phone : 604 415-9944 Fax : 604 415-9954	DRAWN BY :	DATE :	PRODUCT :	CATALOG NUMBER :	
		R.H.	JAN. 22/13	CASTING	D26A	
MATERIAL SPECIFICATION	1. ASTM A 48 SPECIFICATIONS.	APPROVED :	LOAD RATING	DESCRIPTION :	DWG. NO.	
		REVISION :	H20		D26A- FRAME FOR D26A	SHEET NO.
		SCALE :	REV. NO.		GRATE	1 OF 1
		N.T.S.				



For 450mm
concrete CB barrel

D26A:-18" Cast Iron Cover for D26A Frame

TESTED AUG. 9, 2012 - PASSED H20 LOADING
SCALE: NOT TO SCALE

ESTIMATED WEIGHT - 124 LBS.

NOTES: COATING BITUMINOUS TAR COATED (UNCOATED ON REQUEST)	 DIAMOND PRECAST CONCRETE 7520 Conrad Street Burnaby, B.C. V5A 2H7 Phone : 604 415-9944 Fax : 604 415-9954	DRAWN BY :	DATE :	PRODUCT:	CATALOG NUMBER:
		R.H.	APR. 05/13	CASTING	D26A-Cover
MATERIAL SPECIFICATION 1. ASTM A 48 SPECIFICATIONS.		APPROVED :	LOAD RATING	DESCRIPTION:	DWG. NO.
		REVISION :	REV. NO.		D26A-COVER - FOR D26A FRAME
		SCALE :		N.T.S.	



7520 Conrad Street
Burnaby, BC V5A 2H7

Phone : 604 415 5181
Fax : 604 415 5185

DRAWN BY: P.S DATE: 04/2007

APPROVED:

REVISION:

SCALE: NOT TO SCALE

LOAD RATING
H 20

MATERIAL SPECIFICATION
ASTM A 48

COATING
BITUMINOUS TAR COATED
(UNCOATED ON REQUEST)

ESTIMATED WEIGHT -
74 LBS.

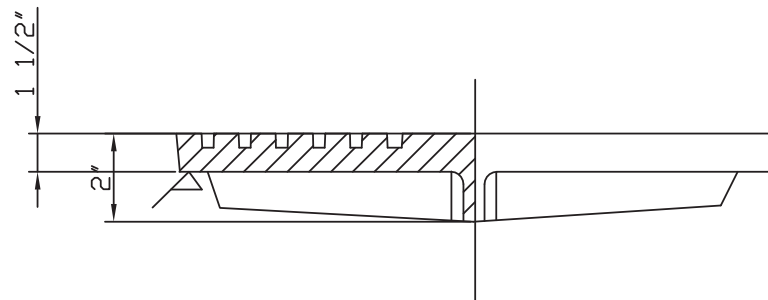
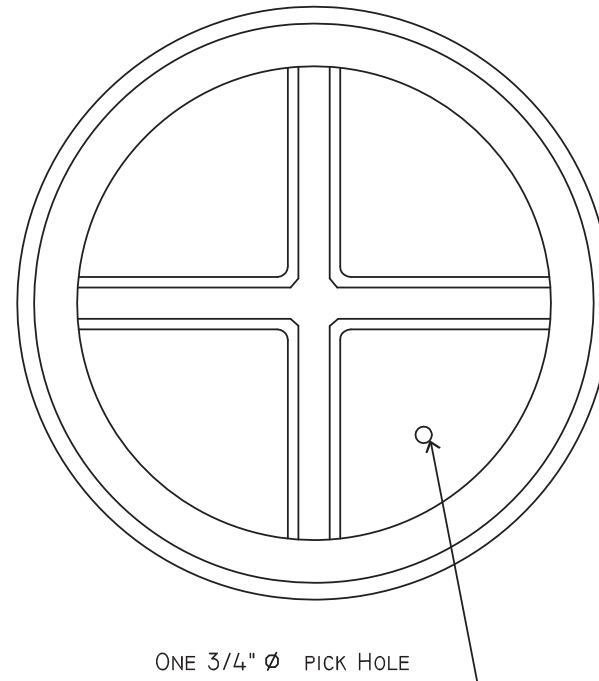
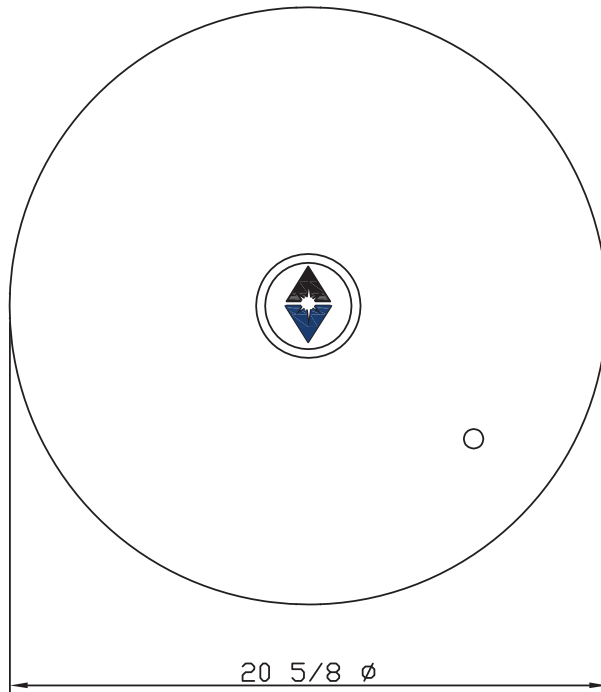
Note:-

For 450mm
concrete CB barrel

PART / DWG NUMBER

D27-Cover

CATALOG NUMBER



D27:- Drop in Cast Iron Cover for 450 mm Barrel