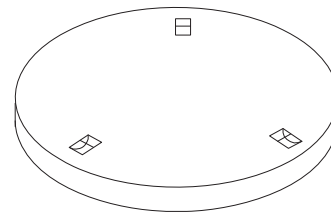
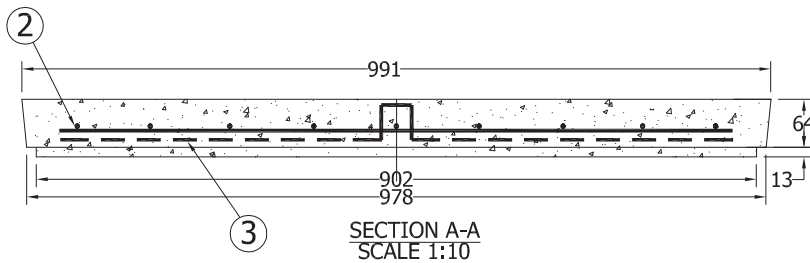


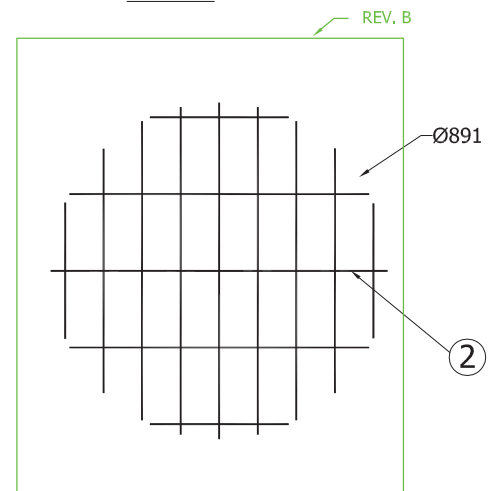
PLAN VIEW
SCALE 1:20



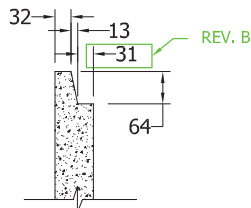
3D VIEW



SECTION A-A
SCALE 1:10



REINFORCEMENT PLAN VIEW
SCALE 1:20



TONGUE & GROOVE DETAIL
SCALE 1:15

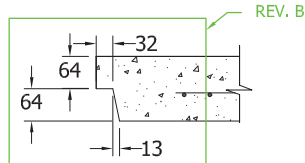
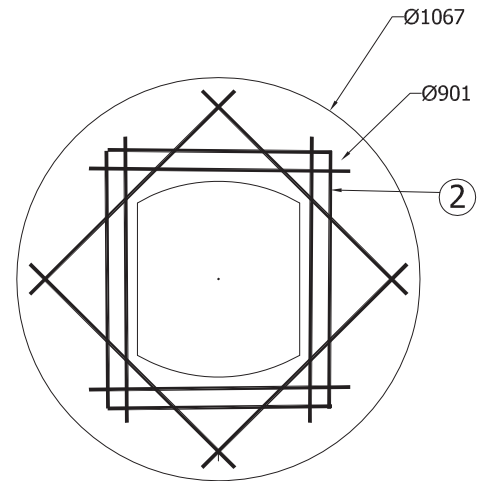
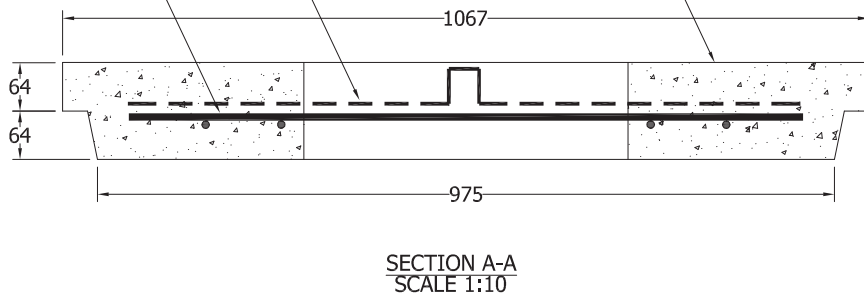
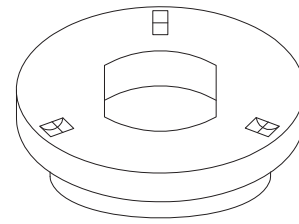
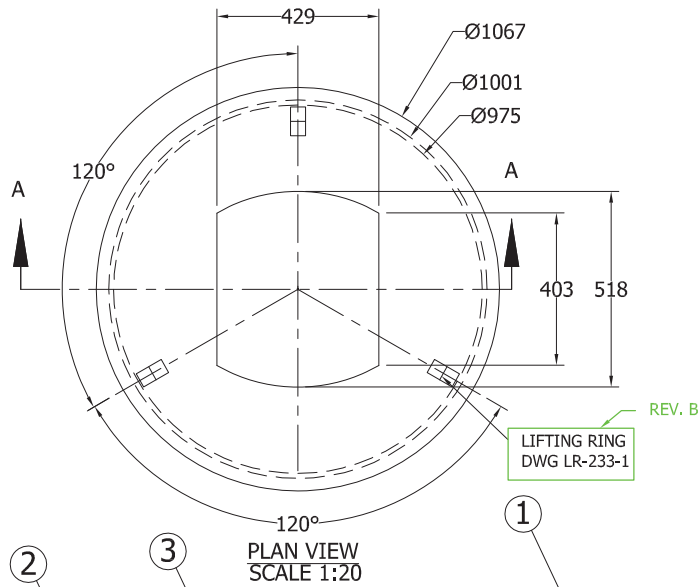
Specification and General Notes:

1. Manhole design/manufacture to ASTM C478M Specification.
2. Concrete testing to current version of ASTM C497/CSA 23.1&2.
3. Min. concrete compressive strength 30 MPa with Max. W/C ratio of 0.5
4. Gasket to ASTM C-443 specification (by others).
5. Concrete cover to be Min.25mm.
6. All dimensions to be millimeter.
7. Welded wire mesh overlap to be 300mm.
8. Manhole design and construction to MMCD manhole specification section 02725.
9. Manufacturing tolerance to be +/- 5mm.
10. Concrete Exposure Class to be A-3
11. Min. Stripping Strength to be 15MPa
12. All Form Finish to be Standard Grade
13. All Unformed Finish to be Steel Trowelled Finish or Wood Float Finish
14. Lifting cable and accessories to meet the strength requirement in lifting detail
15. Hoisting and Rigging system to meet WORK SAFE BC OHS Regulation Guideline Part 14/15



Description:
914 ID Concrete Solid Lid
 36"ID Concrete Solid Lid #395
Project:

Drawn : D.L.	Date : 16/09/2016	Catalog No. 36CLS
Approved : V.W.	Load Rating: N/A	
Rev. No. B	Scale : As Shown	Dwg. No. 36-09



Specification and General Notes:

1. Manhole design/manufacture to ASTM C478M Specification.
2. Concrete testing to current version of ASTM C497/CSA 23.1&2.
3. Min. concrete compressive strength 30 MPa with Max. W/C ratio of 0.5
4. Gasket to ASTM C-443 specification (by others).
5. Concrete cover to be Min.25mm.
6. All dimensions to be millimeter.
7. Welded wire mesh overlap to be 300mm.
8. Manhole design and construction to MMCD manhole specification section 02725.
9. Manufacturing tolerance to be +/- 5mm.
10. Concrete Exposure Class to be A-3
11. Min. Stripping Strength to be 15MPa
12. All Form Finish to be Standard Grade
13. All Unformed Finish to be Steel Trowelled Finish or Wood Float Finish
14. Lifting cable and accessories to meet the strength requirement in lifting detail
15. Hoisting and Rigging system to meet WORK SAFE BC OHS Regulation Guideline Part 14/15



Description:
1067 OD Donut Lid Curb & Gutter Male

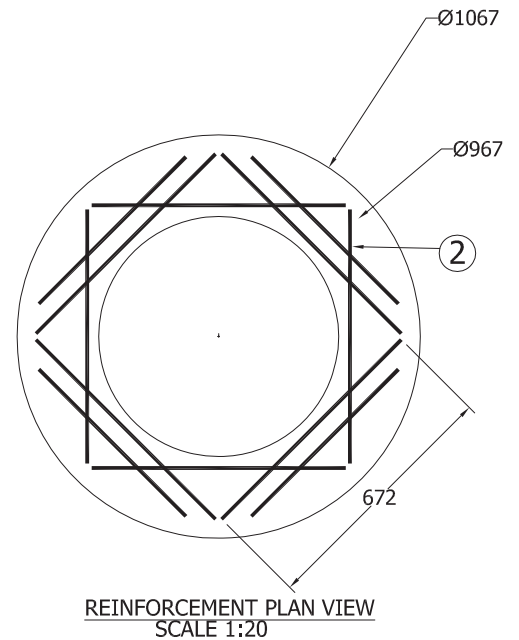
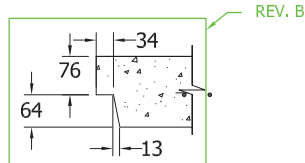
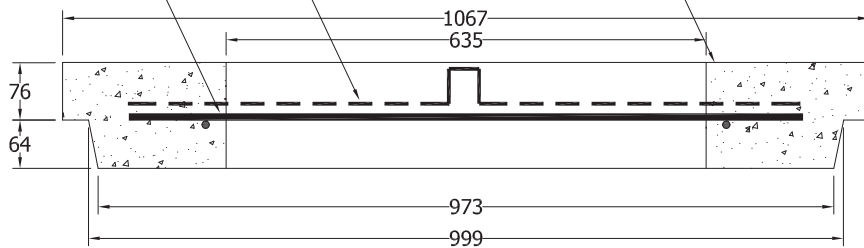
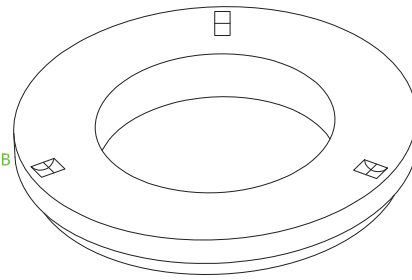
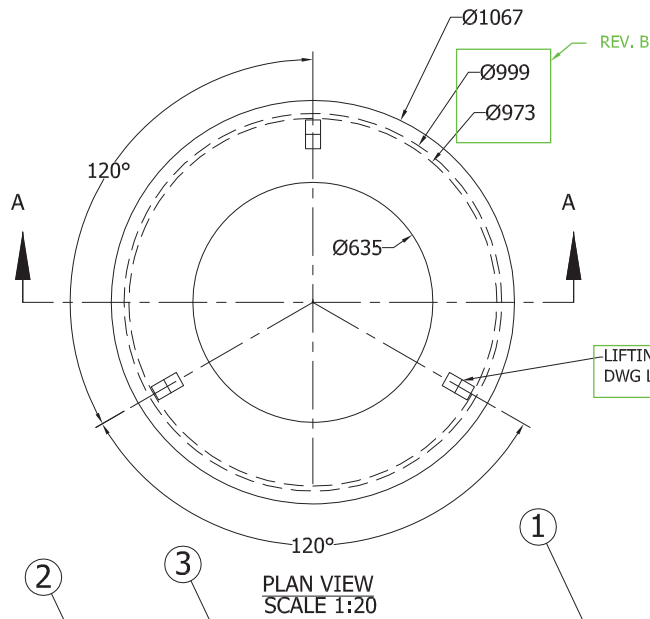
36" ID Donut Lid Curb & Gutter #470

Project:

Drawn : D.L.	Date : 16/09/2016
Approved : V.W.	Load Rating: H20 RATED
Rev. No. B	Scale : As Shown

Catalog No.
36DLCG

Dwg. No.
36-10



Specification and General Notes:

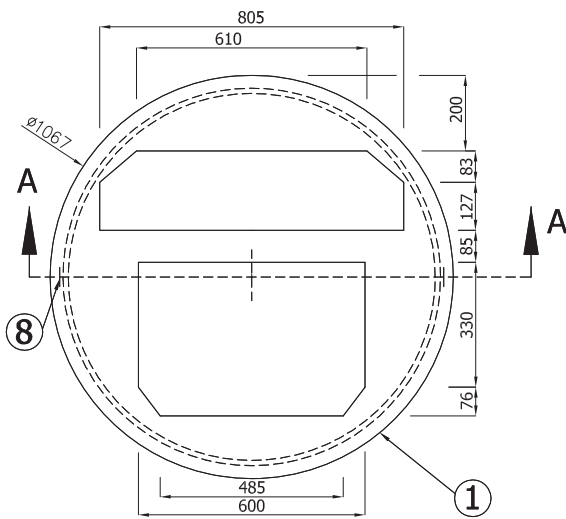
1. Manhole design/manufacture to ASTM C478M Specification.
2. Concrete testing to current version of ASTM C497/CSA 23.1&2.
3. Min. concrete compressive strength 30 MPa with Max. W/C ratio of 0.5
4. Gasket to ASTM C-443 specification (by others).
5. Concrete cover to be Min.25mm.
6. All dimensions to be millimeter.
7. Welded wire mesh overlap to be 300mm.
8. Manhole design and construction to MMCD manhole specification section 02725.
9. Manufacturing tolerance to be +/- 5mm.
10. Concrete Exposure Class to be A-3
11. Min. Stripping Strength to be 15MPa
12. All Form Finish to be Standard Grade
13. All Unformed Finish to be Steel Trowelled Finish or Wood Float Finish
14. Lifting cable and accessories to meet the strength requirement in lifting detail
15. Hoisting and Rigging system to meet WORK SAFE BC OHS Regulation Guideline Part 14/15



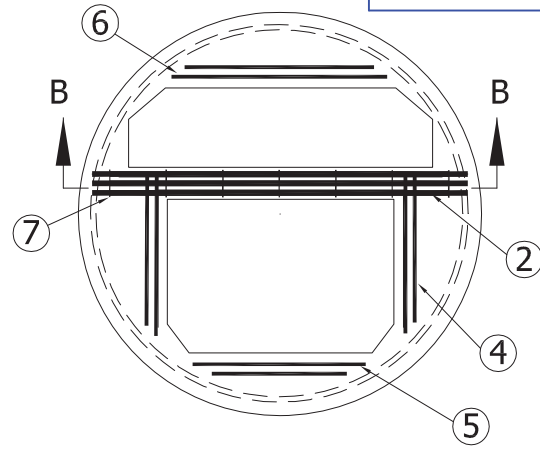
Description:
1067 OD Donut Round Opening Male
 36"ID Donut Round Opening Male #380
Project:

Drawn :
D.L.
Date :
16/09/2016
Approved :
V.W.
Load Rating:
H20 RATED
Rev. No.
B
Scale :
As Shown

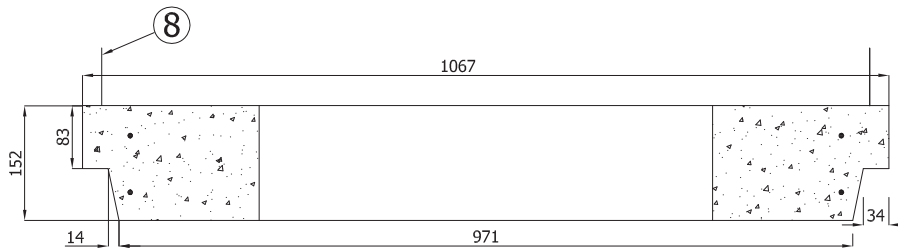
Catalog No.
36DLRO
Dwg. No.
36-11



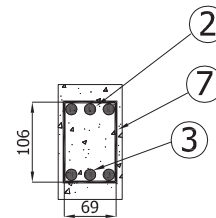
PLAN VIEW
SCALE 1:20



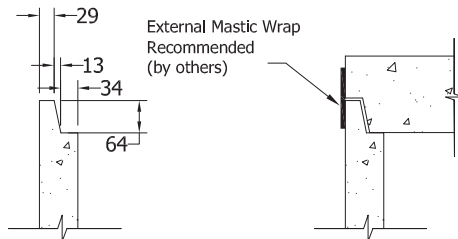
REINFORCEMENT PLAN VIEW
SCALE 1:20



SECTION A-A
SCALE 1:10

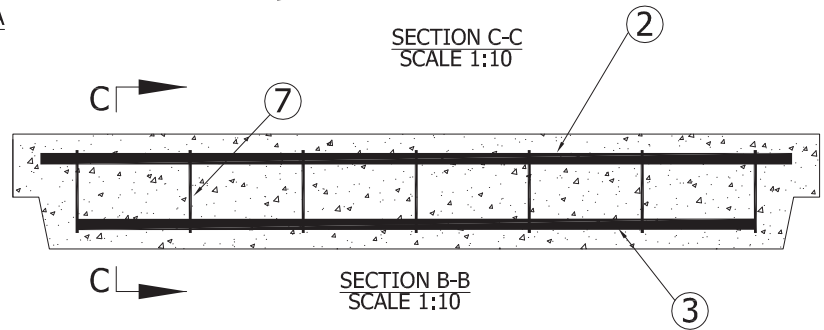


SECTION C-C
SCALE 1:10



GROOVE DETAIL
SCALE 1:15

SUGGESTED JOINT DETAIL
SCALE 1:15



SECTION B-B
SCALE 1:10

Specification and General Notes:

1. Manhole design/manufacture to ASTM C478M & CSA A257.3 Specification.
2. Concrete testing to current version of ASTM C497/CSA 23.1&2.
3. Min. concrete compressive strength 30 MPa with Max. W/C ratio of 0.5.
4. Gasket to ASTM C-443 specification (by others).
5. Concrete cover to be Min. 25mm.
6. All dimensions to be millimeter.
7. Welded wire mesh overlap to be 300mm.
8. Manhole design and construction to MMCD manhole specification section 02725.
9. Manufacturing tolerance to be +/- 5mm.
10. Concrete Exposure Class to be A-3.
11. Min. Stripping Strength to be 15MPa.
12. All Form Finish to be Standard Grade.
13. All Unformed Finish to be Steel Trowelled Finish or Wood Float Finish.
14. Lifting cable and accessories to meet the strength requirement in lifting detail.
15. Hoisting and Rigging system to meet WORK SAFE BC OHS Regulation Guideline Part 14/15



Description:

1067 OD Donut Side Inlet Rec-M 335#

36" ID Donut Side Inlet Rec-M 335#

Project:

Drawn :

D.L

Date :

31/03/2016

Catalog No.

36DLSRM

Approved :

V.W.

Load Rating:

H20 RATED

Dwg. No.

36-12

Rev. No.

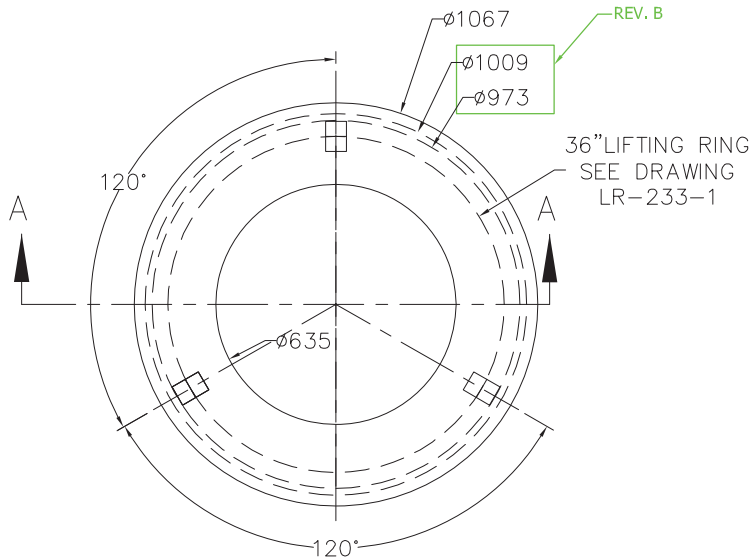
C

Scale :

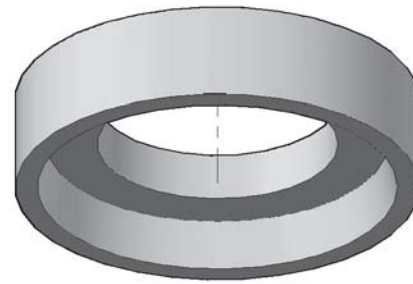
As Shown

Sheet No.

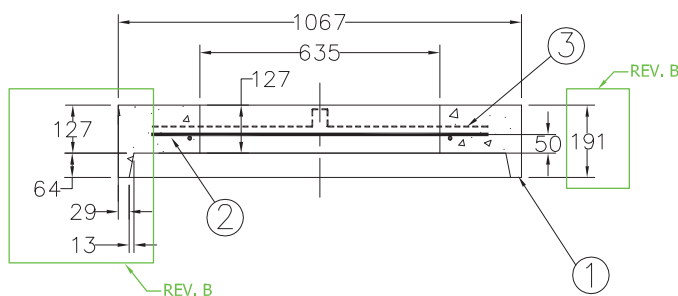
1 OF 1



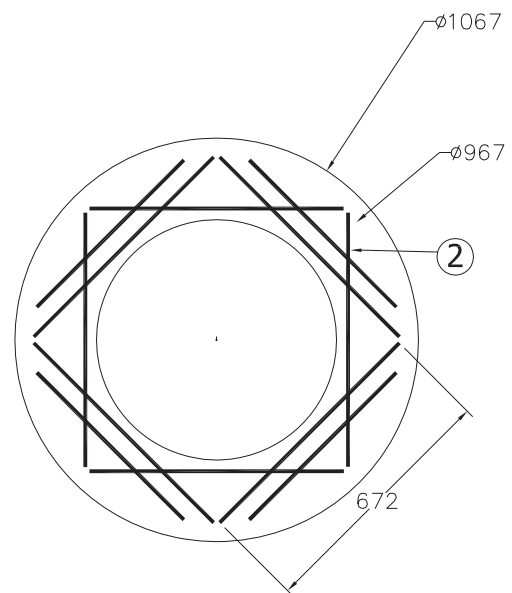
PLAN VIEW
SCALE 1:20



3D VIEW



SECTION A-A
SCALE 1:10



REINFORCEMENT PLAN VIEW
SCALE 1:20

Specification and General Notes:

1. Manhole design/manufacture to ASTM C478M Specification.
2. Concrete testing to current version of ASTM C497/CSA 23.1&2.
3. Min. concrete compressive strength 30 MPa with Max. W/C ratio of 0.5
4. Gasket to ASTM C-443 specification (by others).
5. Concrete cover to be Min. 25mm.
6. All dimensions to be millimeter.
7. Welded wire mesh overlap to be 300mm.
8. Manhole design and construction to MMCD manhole specification section 02725.
9. Manufacturing tolerance to be +/- 5mm.
10. Concrete Exposure Class to be A-3
11. Min. Stripping Strength to be 15MPa
12. All Form Finish to be Standard Grade
13. All Unformed Finish to be Steel Trowelled Finish or Wood Float Finish
14. Lifting cable and accessories to meet the strength requirement in lifting detail
15. Hoisting and Rigging system to meet WORK SAFE BC OHS Regulation Guideline Part 14/15



Description:
1067 OD Donut Round Opening Female

36"ID Donut Round Opening Female #380

Project:

Drawn : D.L.	Date : 16/09/2016	Catalog No. 36DLROF
Approved : V.W.	Load Rating: H20 RATED	Dwg. No. 36-14
Rev. No. B	Scale : As Shown	Sheet No. 1 OF 1