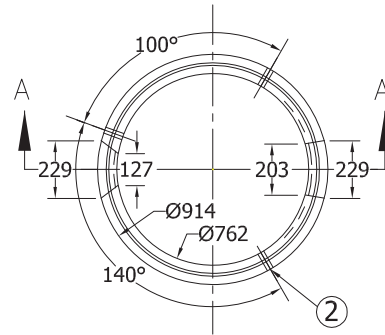
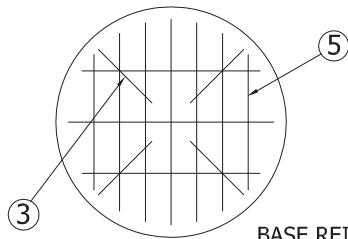


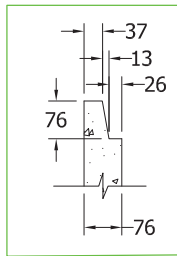
SECTION A-A
SCALE 1:30



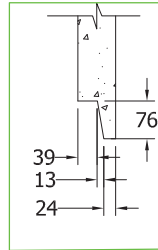
PLAN VIEW
SCALE 1:30



BASE REINFORCING



TONGUE & GROOVE DETAIL
SCALE 1 : 15

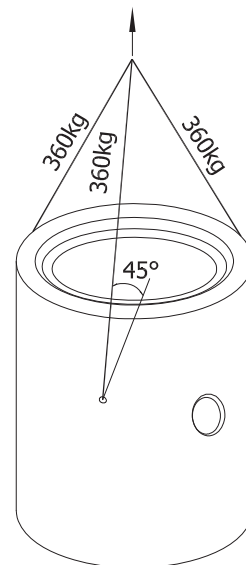


SUGGESTED JOINT DETAIL
SCALE 1 : 15

REV.B

External Mastic Wrap
Recommended
(by others)

Mastic
(by others)



3D VIEW

Specification and General Notes:

1. Manhole design/manufacture to ASTM C478M Specification.
2. Concrete testing to current version of ASTM C497/CSA 23.1&2.
3. Min. concrete compressive strength 30 MPa with Max. W/C ratio of 0.5
4. Gasket to ASTM C-443 specification (by others).
5. Concrete cover to be Min.25mm.
6. All dimensions to be millimeter.
7. Welded wire mesh overlap to be 300mm.
8. Manhole design and construction to MMCD manhole specification section 02725.
9. Manufacturing tolerance to be +/- 5mm.
10. Concrete Exposure Class to be A-3
11. Min. Stripping Strength to be 15MPa
12. All Form Finish to be Standard Grade
13. All Unformed Finish to be Steel Trowelled Finish or Wood Float Finish
14. Lifting cable and accessories to meet the strength requirement in lifting detail
15. Hoisting and Rigging system to meet WORK SAFE BC OHS Regulation Guideline Part 14/15



Description:

762ID x 1219H Oil Interceptor

30"ID x 48"H Oil Interceptor 1553 #

Project:

Drawn :

D.L

Date :

31/08/2016

Catalog No.

3048CBOI

Approved :

V.W.

Load Rating:

N/A

Dwg. No.

30-16

Rev. No.

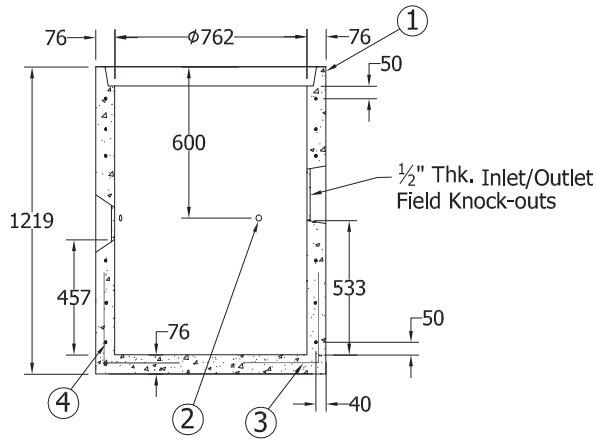
B

Scale :

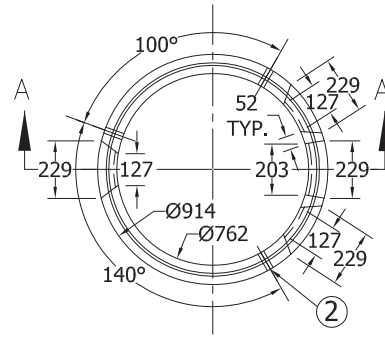
As Shown

Sheet No.

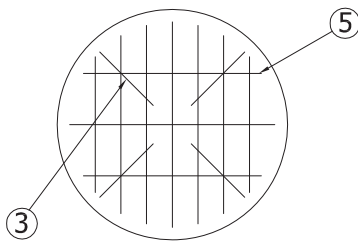
1 OF 1



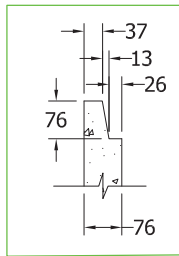
SECTION A-A
SCALE 1:30



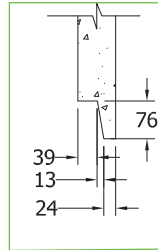
PLAN VIEW
SCALE 1:30



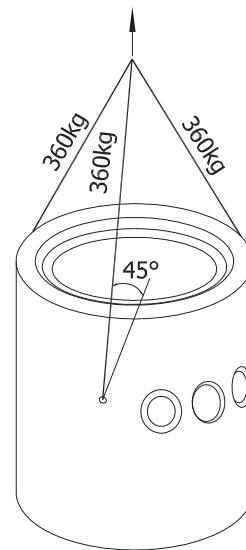
BASE REINFORCING



TONGUE & GROOVE DETAIL
SCALE 1 : 15



SUGGESTED JOINT DETAIL
SCALE 1 : 15



3D VIEW

Specification and General Notes:

1. Manhole design/manufacture to ASTM C478M Specification.
2. Concrete testing to current version of ASTM C497/CSA 23.1&2.
3. Min. concrete compressive strength 30 MPa with Max. W/C ratio of 0.5
4. Gasket to ASTM C-443 specification (by others).
5. Concrete cover to be Min.25mm.
6. All dimensions to be millimeter.
7. Welded wire mesh overlap to be 300mm.
8. Manhole design and construction to MMCD manhole specification section 02725.
9. Manufacturing tolerance to be +/- 5mm.
10. Concrete Exposure Class to be A-3
11. Min. Stripping Strength to be 15MPa
12. All Form Finish to be Standard Grade
13. All Unformed Finish to be Steel Trowelled Finish or Wood Float Finish
14. Lifting cable and accessories to meet the strength requirement in lifting detail
15. Hoisting and Rigging system to meet WORK SAFE BC OHS Regulation Guideline Part 14/15



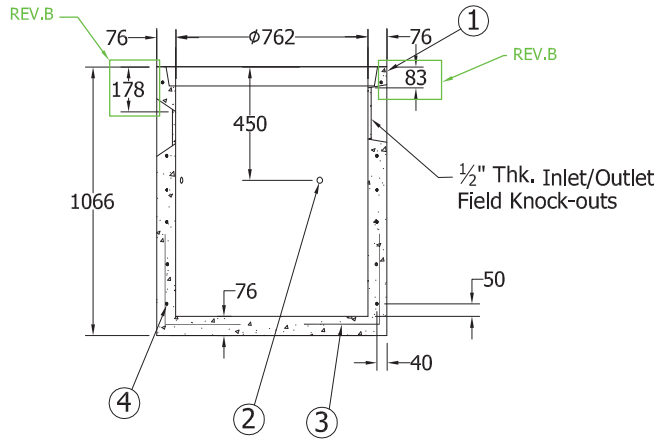
Description:
762ID x 1219H Sump/Catch Basin GT

30"ID x 48"H Catch Basin 1553 #

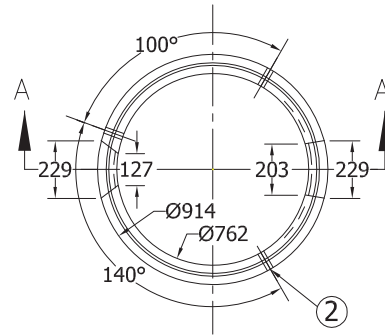
Project:

Drawn :
D.L.
Date :
31/08/2016
Approved :
V.W.
Load Rating:
N/A
Rev. No.
B
Scale :
As Shown

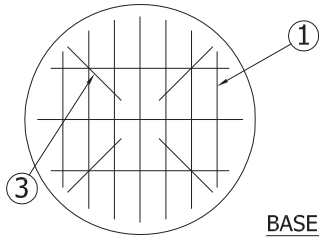
Catalog No.
3048CBS
Dwg. No.
30-10



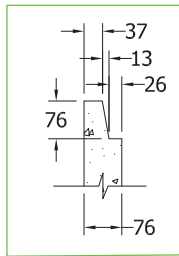
SECTION A-A
SCALE 1:30



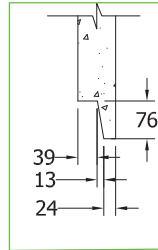
PLAN VIEW
SCALE 1:30



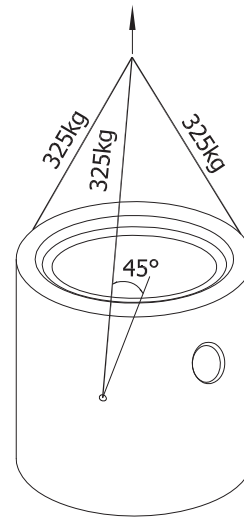
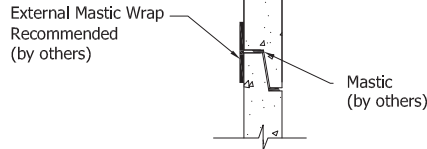
BASE REINFORCING



TONGUE & GROOVE DETAIL
SCALE 1 : 15



SUGGESTED JOINT DETAIL
SCALE 1 : 15



3D VIEW

Specification and General Notes:

1. Manhole design/manufacture to ASTM C478M Specification.
2. Concrete testing to current version of ASTM C497/CSA 23.1&2.
3. Min. concrete compressive strength 30 MPa with Max. W/C ratio of 0.5
4. Gasket to ASTM C-443 specification (by others).
5. Concrete cover to be Min.25mm.
6. All dimensions to be millimeter.
7. Welded wire mesh overlap to be 300mm.
8. Manhole design and construction to MMCD manhole specification section 02725.
9. Manufacturing tolerance to be +/- 5mm.
10. Concrete Exposure Class to be A-3
11. Min. Stripping Strength to be 15MPa
12. All Form Finish to be Standard Grade
13. All Unformed Finish to be Steel Trowelled Finish or Wood Float Finish
14. Lifting cable and accessories to meet the strength requirement in lifting detail
15. Hoisting and Rigging system to meet WORK SAFE BC OHS Regulation Guideline Part 14/15



Description:

762ID x 1066H Oil Interceptor

30"ID x 42"H Oil Interceptor 1553 #

Project:

Drawn :

D.L

Date :

31/08/2016

Catalog No.

3042CBOI

Approved :

V.W.

Load Rating:

N/A

Dwg. No.

30-08

Rev. No.

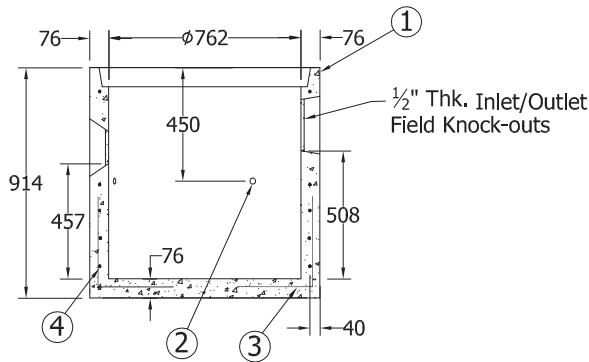
B

Scale :

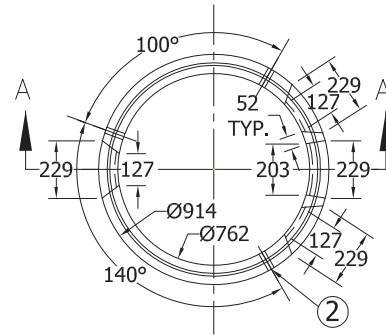
As Shown

Sheet No.

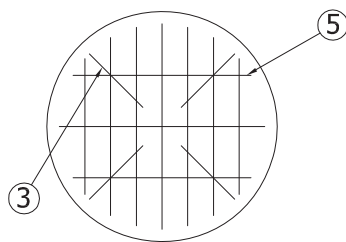
1 OF 1



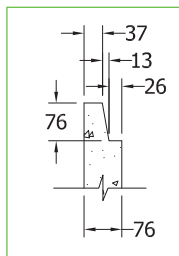
SECTION A-A
SCALE 1:30



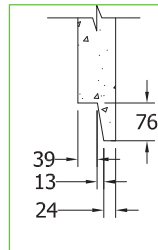
PLAN VIEW
SCALE 1:30



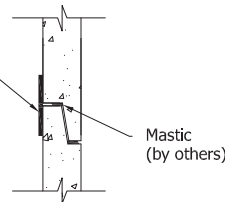
BASE REINFORCING



TONGUE & GROOVE DETAIL
SCALE 1 : 15



SUGGESTED JOINT DETAIL
SCALE 1 : 15



3D VIEW

Specification and General Notes:

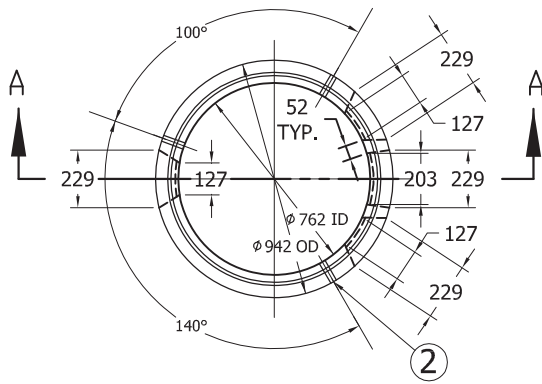
1. Manhole design/manufacture to ASTM C478M Specification.
2. Concrete testing to current version of ASTM C497/CSA 23.1&2.
3. Min. concrete compressive strength 30 MPa with Max. W/C ratio of 0.5
4. Gasket to ASTM C-443 specification (by others).
5. Concrete cover to be Min.25mm.
6. All dimensions to be millimeter.
7. Welded wire mesh overlap to be 300mm.
8. Manhole design and construction to MMCD manhole specification section 02725.
9. Manufacturing tolerance to be +/- 5mm.
10. Concrete Exposure Class to be A-3
11. Min. Stripping Strength to be 15MPa
12. All Form Finish to be Standard Grade
13. All Unformed Finish to be Steel Trowelled Finish or Wood Float Finish
14. Lifting cable and accessories to meet the strength requirement in lifting detail
15. Hoisting and Rigging system to meet WORK SAFE BC OHS Regulation Guideline Part 14/15



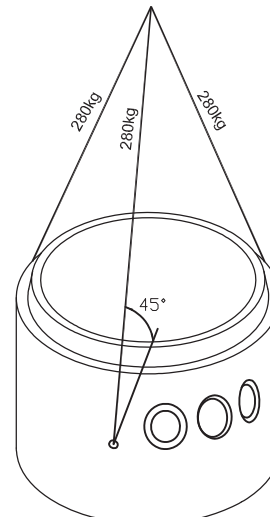
Description:	762ID x 914H Sump/Catch Basin GT	
	30"ID x 36"H Catch Basin 1246 #	
Project:		

Drawn :	Date :
D.L	31/08/2016
Approved :	Load Rating:
V.W.	N/A
Rev. No.	Scale :
B	As Shown

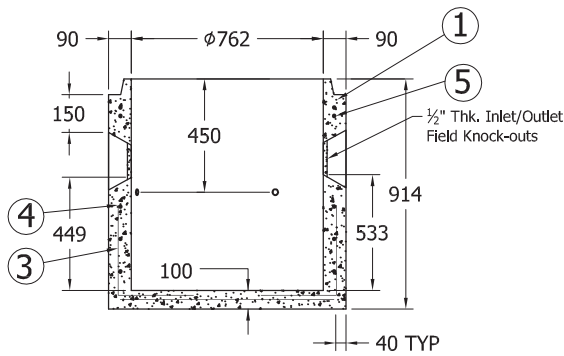
Catalog No.	3036CBS
Dwg. No.	
	30-05



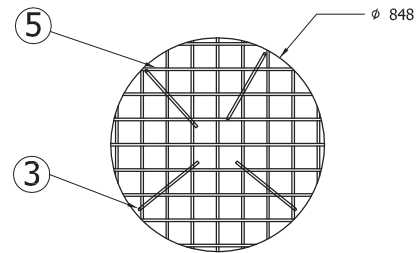
PLAN VIEW
SCALE 1:30



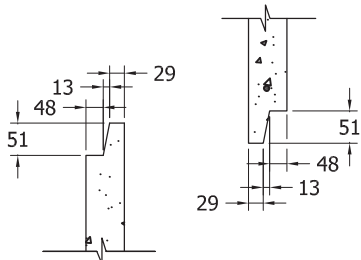
Lifting Detail



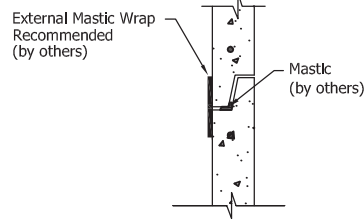
SECTION A-A
SCALE 1:30



BASE REINFORCEMENT PLAN VIEW



TONGUE & GROOVE DETAIL
SCALE 1 : 15



SUGGESTED JOINT DETAIL
SCALE 1 : 15

Specification and General Notes:

1. Manhole design/manufacture to ASTM C478M Specification.
2. Concrete testing to current version of ASTM C497/CSA 23.1 & 2.
3. Min. concrete compressive strength 30 MPa with Max. W/C ratio of 0.5
4. Gasket to ASTM C-443 specification (by others).
5. Concrete cover to be Min.25mm.
6. All dimensions to be millimeter.
7. Welded wire mesh overlap to be 300mm.
8. Manhole design and construction to MMCD manhole specification section 02725.
9. Manufacturing tolerance to be +/- 5mm.
10. Concrete Exposure Class to be A-3
11. Min. Stripping Strength to be 15MPa
12. All Form Finish to be Standard Grade
13. All Unformed Finish to be Steel Trowelled Finish or Wood Float Finish
14. Lifting cable and accessories to meet the strength requirement in lifting detail
15. Hoisting and Rigging system to meet WORK SAFE BC OHS Regulation Guideline Part 14/15



Description:	762ID x 914H Sump TT	
	30"ID x 36"H Manhole Base 1475 #	
Project:		

Drawn : D.N.	Date : 07/20/2015	Catalog No. 3036B-MOT
Approved : V.W.	Load Rating: N/A	
Rev. No. A	Scale : As Shown	Dwg. No. 30-04