

## STORM SEWER - NORTH ROBSON DRAINAGE PH2

Engineer: McElhanney Consulting Services Ltd. [Surrey, BC]

Project: Storm Sewer [Surrey, BC]

Contractor: Pedre Contractors Ltd. [Langley, BC]

Owner: City of Surrey [Surrey, BC]



MH D38

**DIAMOND** PRECAST CONCRETE & MUNICIPAL CASTINGS

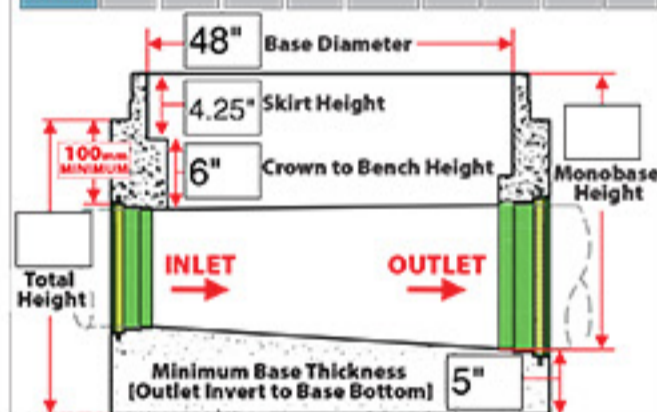
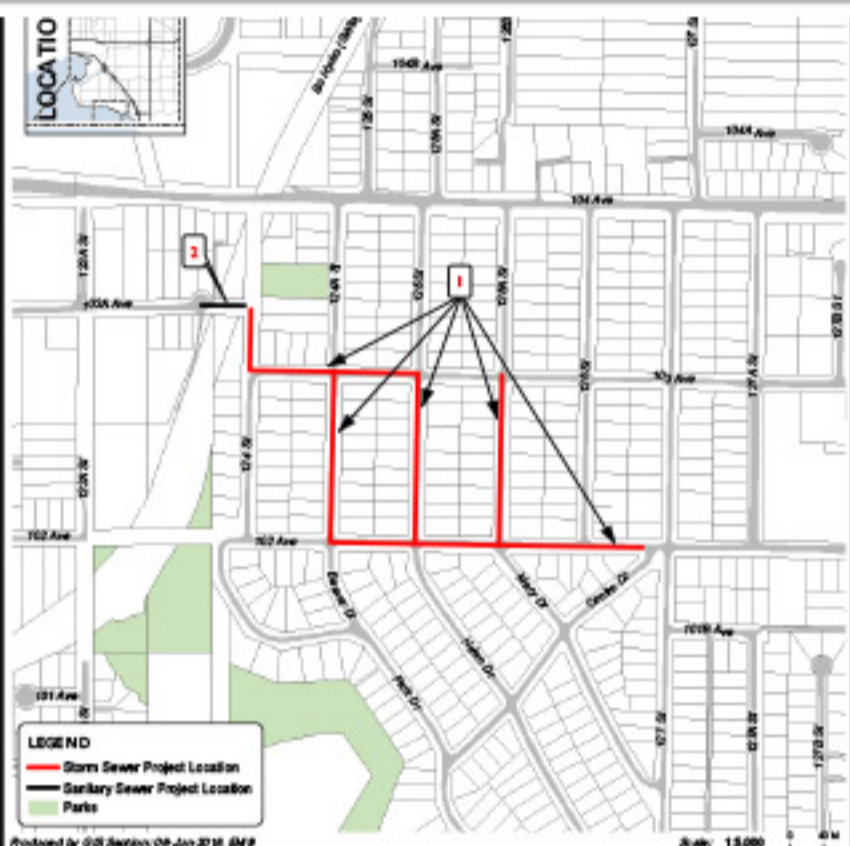
Contractor: Pedre PO#: 600

Project: North Robson Drainage

Manhole#: 007 Diameter: 48" Wall: 5"

Predl Job#: 2141874 Base ID#:

	DEG	DIFF	SLP	Pipe Type	Pipe Class	Pipe Size	CH Size	Pipe OD	Pipe ID
Outlet	0	0	13%	GRT	SLEEVE	36"	24"		
Inlet	157	1.2"	11%	GRT	SLEEVE	29"	21"		
1" LAT									
2" LAT									
3" LAT									
4" LAT									

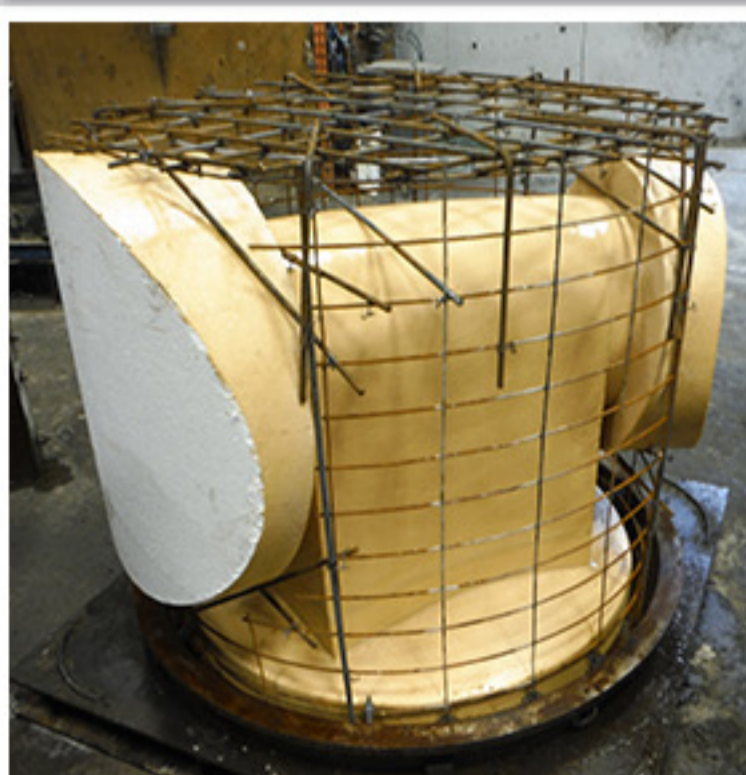



CONTRACT M.S. 4816-002-11  
North Robson Storm and Sanitary Phase 2 Works

ENGINEERING DEPARTMENT



MH D37



COMPLETE CAPABILITIES



COMPLETE CAPABILITIES

DIAMOND + SA = MMCD PLATINUM

WEBSITE

diamondprecast.com

OPT-IN

Weekly Newsletters