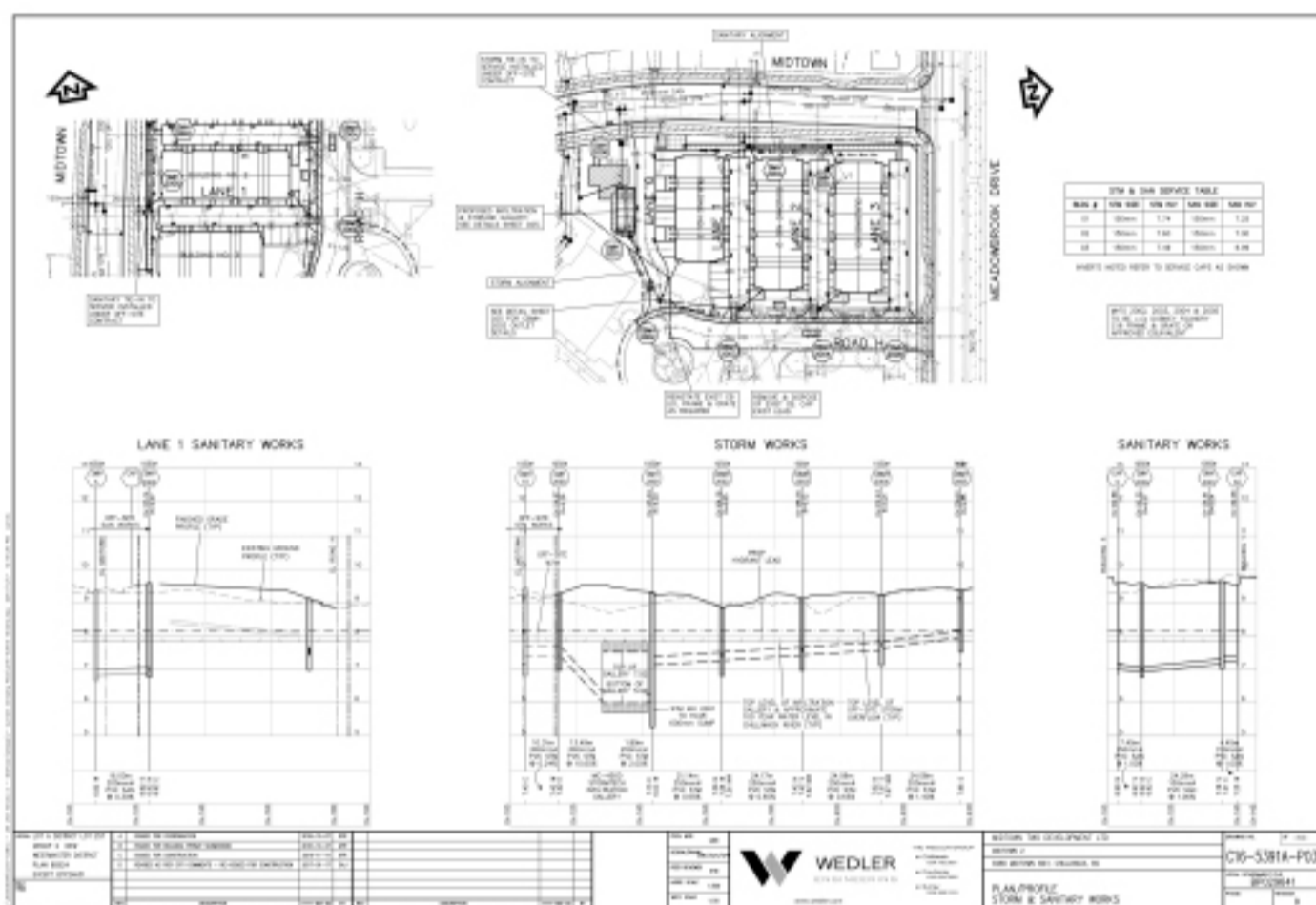


1050mm PREBENCH - MIDTOWN II

Project : Midtown Phase 2 (Chilliwack, BC)
 Contractor : Timbro Contracting (Agassiz, BC)

Owner : Midtown Two Development Ltd
 Engineer : Wedler Engineering (Chilliwack, BC)



[Click to enlarge](#)



COMPLETE CAPABILITIES

PREDL systems
 THE MANHOLE LINER EXPERTS

COMPLETE CAPABILITIES

DIAMOND + CSA = MMCD PLATINUM

WEBSITE
diamondprecast.com

OPT-IN
 Weekly Newsletters