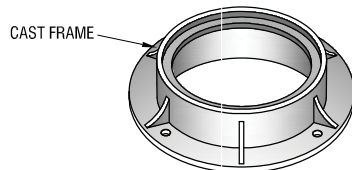
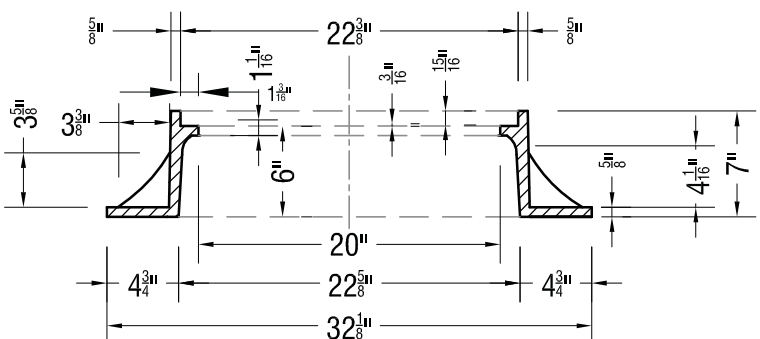


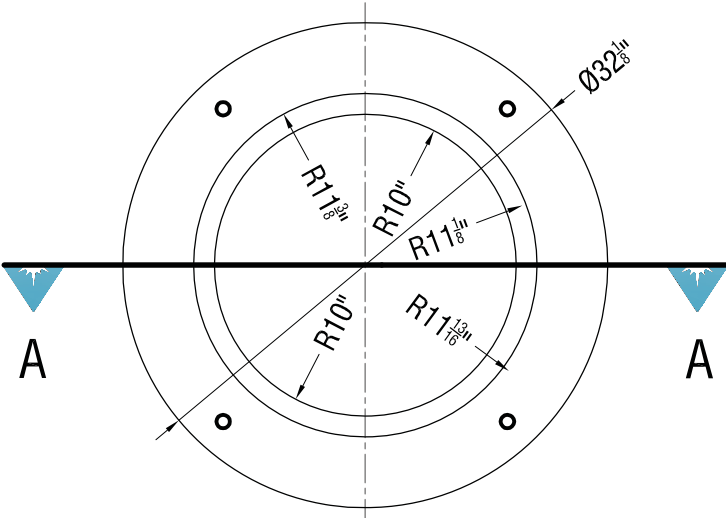
**PLAN VIEW**



**SKETCH VIEW**



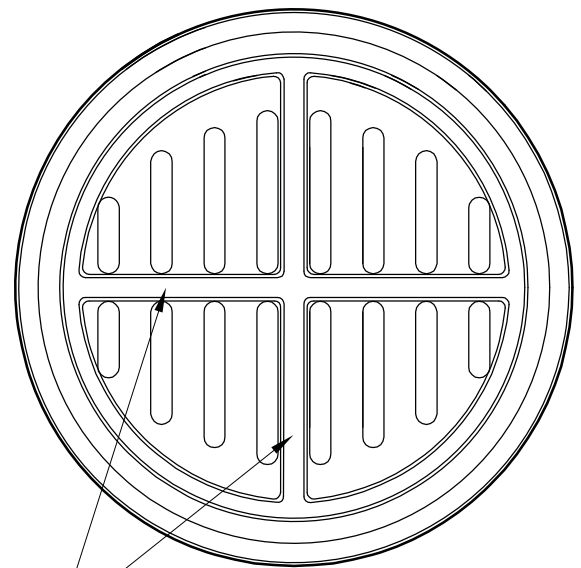
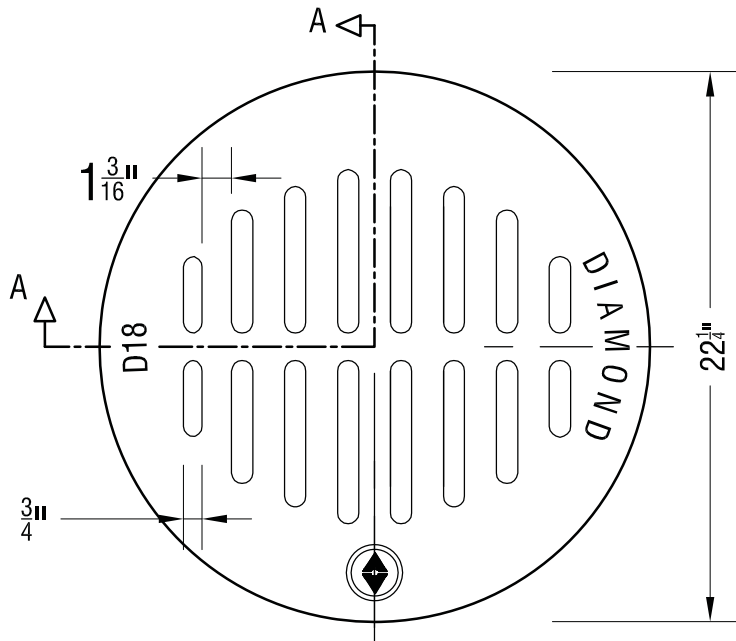
**SECTION A-A**



**CAST IRON FRAME - BOTTOM VIEW**

**ESTIMATED WEIGHT - 168 LBS.**

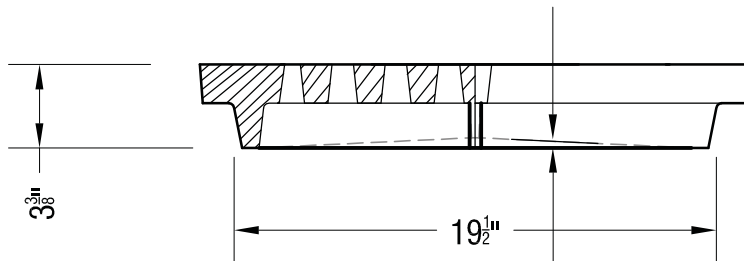
NOTES : <b>COATING</b> BITUMINOUS TAR COATED (UNCOATED ON REQUEST)	 7520 Conrad Street Burnaby, B.C. V5A 2H7 Phone : 604 415-9944 Fax : 604 415-9954	DRAWN BY : <b>R.H.</b>	DATE : <b>SEPT. 26/13</b>	PRODUCT: <b>CASTING</b>	CATALOG NUMBER: <b>D187-FRAME</b>
		APPROVED :	LOAD RATING	DESCRIPTION: <b>MANHOLE FRAME 7"</b>	DWG. NO.
<b>MATERIAL SPECIFICATION</b>	<b>ASTM A 48</b>	REVISION : REV. NO.	SHEET NO. <b>1 OF 1</b>		
		SCALE : <b>N.T.S.</b>			



\* INCREASE DEPTH OF GIRDERS TO INCREASE WEIGHT BEARING CAPACITY.

PLAN

UNDERSIDE



\* INCREASE DEPTH OF GIRDERS TO INCREASE WEIGHT BEARING CAPACITY.

SECTION

SCALE: NOT TO SCALE

**D18 - 22-1/4" Cast Iron Grate for D18-Frame**

**TESTED AUG. 1, 2012 - 1st Failed @ 36,400lbs.  
2nd Failed @ 39,200lbs.  
NOT H2O LOADING**

**COATING  
BITUMINOUS TAR COATED  
(UNCOATED ON REQUEST)**

**ESTIMATED WEIGHT - 106 LBS**

**NOTES :**  
\* REVISION: INCREASE DEPTH OF GIRDERS TO INCREASE WEIGHT BEARING CAPACITY.

**DIAMOND**  
PRECAST CONCRETE  
7520 Conrad Street Burnaby, B.C. V5A 2H7  
Phone : 604 415-9944 Fax : 604 415-9954

<b>DRAWN BY :</b> R.H.	<b>DATE :</b> SEPT. 26/13
<b>APPROVED :</b>	<b>LOAD RATING</b>
<b>REVISION :</b>	<b>REV. NO.</b>
<b>SCALE :</b> N.T.S.	

<b>PRODUCT:</b> CASTING	<b>CATALOG NUMBER:</b> D18-GRATE
<b>DESCRIPTION:</b> D18 - CAST IRON GRATE STORM DRAIN	<b>DWG. NO.</b>
	<b>SHEET NO.</b> 1

**MATERIAL SPECIFICATION**  
  
**ASTM A 48**