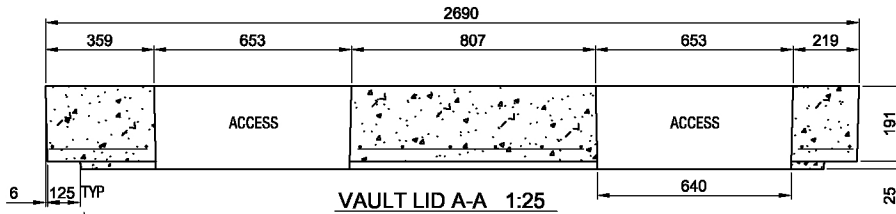
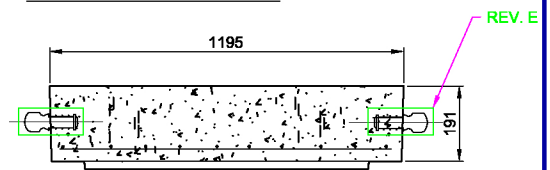


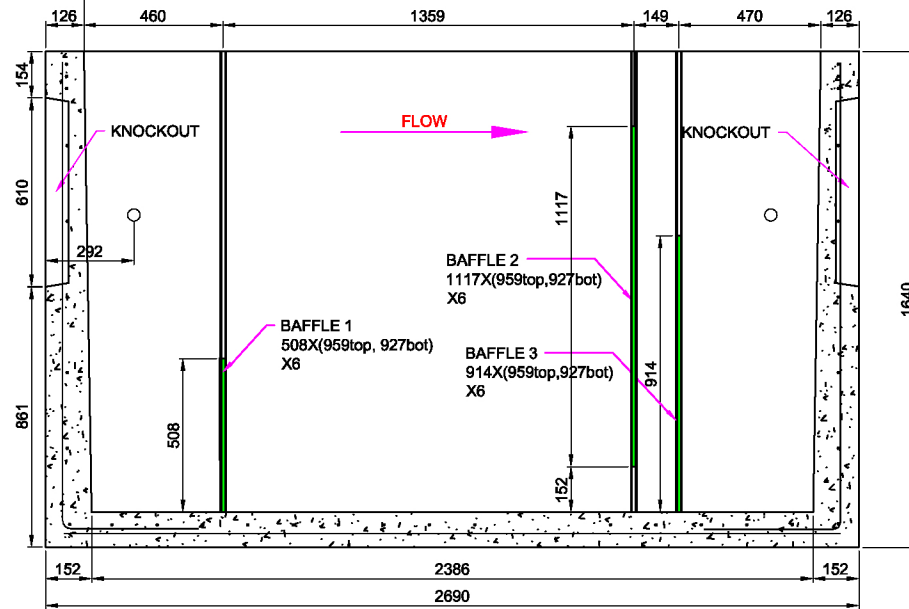
ISOMETRIC VIEW N.T.S.



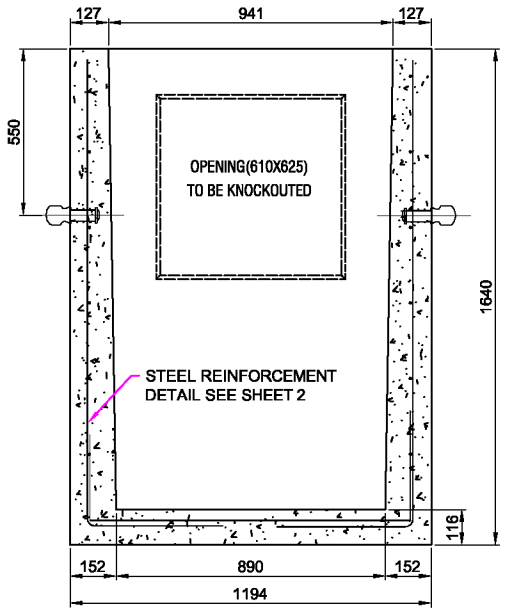
VAULT LID A-A 1:25



VAULT LID B-B 1:25



VAULT BASE A-A 1:25



VAULT BASE B-B 1:25

Specification and General Notes:

1. Structure design to ASTM C913-08 Specification.
2. Concrete testing to current version of CSA A23.1 & 2.
3. Min. concrete compressive strength 30 MPa with Max. W/C ratio of 0.5
4. Concrete cover to be Min.25mm.
5. All dimensions to be millimeter.
6. Construction to MMCD manhole specification section 02725.
7. Manufacturing tolerance to be +/- 5mm.
8. Concrete Exposure Class to be A-3
9. Min. Stripping Strength to be 15MPa
10. All Form Finish to be Standard Grade
11. All Unformed Finish to be Steel Trowelled Finish or Wood Float Finish
12. Lifting cable and accessories to meet the strength requirement in lifting detail
13. Hoisting and Rigging system to meet WORK SAFE BC OHS Regulation Guidline Part 14/15
14. Refer to steel reinforcement drawings for Rrinfocement details
15. Baffle steel to CAN/CSA G4020/G4021 Grade 350A
16. Baffle plate galvanizing to current version of CAN/CSA G164M

Baffle design can be modified to fit your needs, contact the office for details.



Description:
OIL INTERCEPTOR VAULT & LID
 2690X1195X1640 VAULT 13601# (NET Vol. 3.33 m³)
Project:

Drawn : D.N.	Date : 05/04/2017	Catalog No. OI10647
Approved : V.W.	Load Rating: H20 RATED	
Rev. No. E	Scale : As Shown	Dwg. No. OI10647-1