

Specification and General Notes:

1. Manhole design/manufacture to ASTM C478M Specification.
2. Concrete testing to current version of ASTM C497/CSA A23.1&2.
3. Min. concrete compressive strength 30 MPa with Max. W/C ratio of 0.5
4. Gasket to ASTM C-443 specification (by others).
5. Concrete cover to be Min.25mm.
6. All dimensions to be millimeter.
7. Welded wire mesh overlap to be 300mm.
8. Manhole design and construction to MMCD manhole specification section 33 44 01.
9. Manufacturing tolerance to be +/- 5mm.
10. Concrete Exposure Class to be A-3
11. Min. Stripping Strength to be 15MPa
12. All Formed Finishes to be Standard Grade
13. All Unformed Finishes to be Steel Trowelled Finish or Wood Float Finish
14. Lifting cable and accessories to meet the strength requirement in lifting detail
15. Hoisting and Rigging system to meet WORK SAFE BC OHS Regulation Guideline Part 14/15

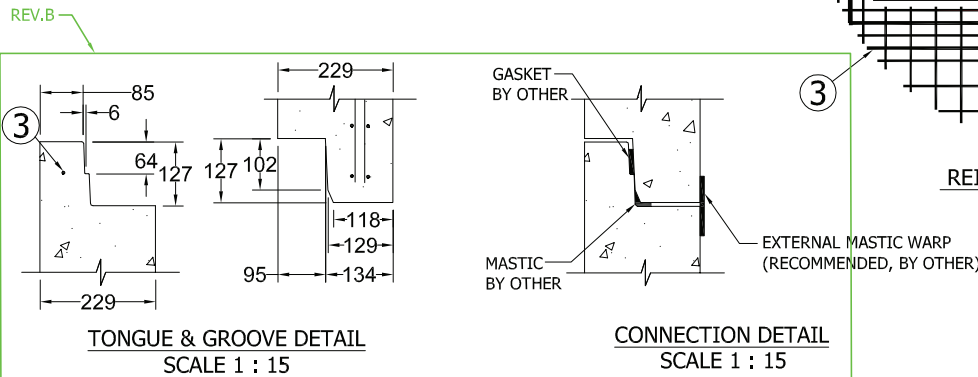
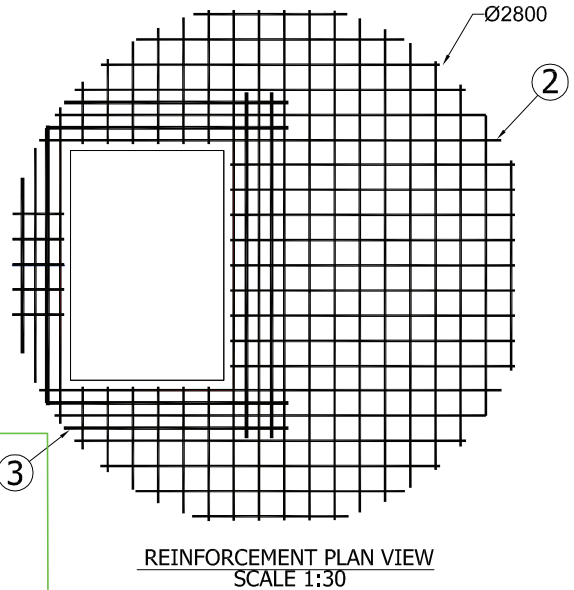
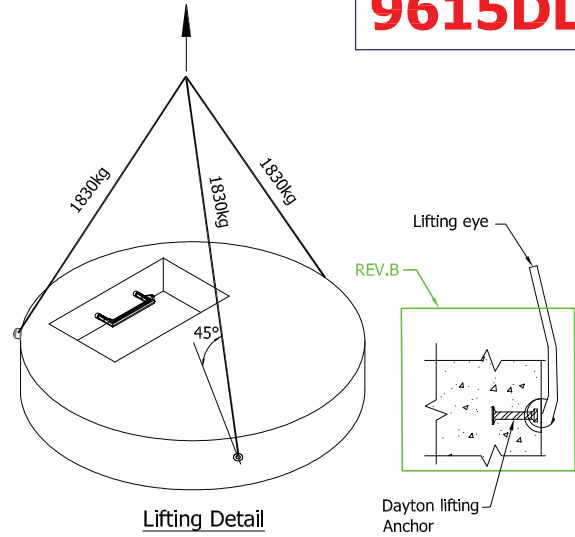
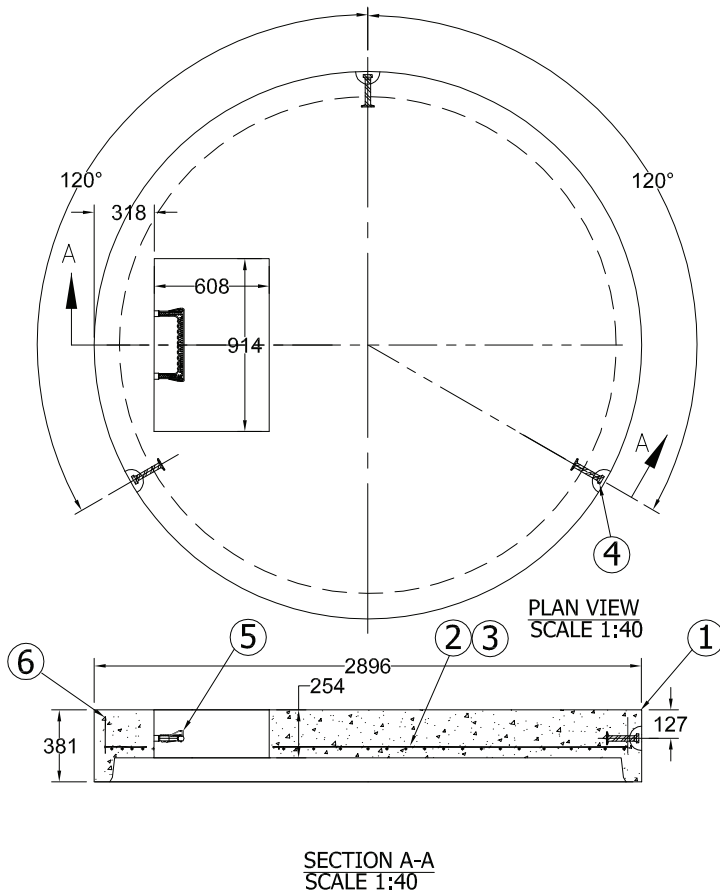


Description:
2438 Donut Lid Offset Round Opening

96 Donut Lid Offset Round Opening 8650 #

Project:

Drawn : D.L.	Date : 19/01/2018	Catalog No. 9615DL
Approved : V.W.	Load Rating: H20 RATED	Dwg. No. 96-09
Rev. No. B	Scale : As Shown	Sheet No. 1 OF 1



Specification and General Notes:

1. Manhole design/manufacture to ASTM C478M Specification.
2. Concrete testing to current version of ASTM C497/CSA A23.1&2.
3. Min. concrete compressive strength 30 MPa with Max. W/C ratio of 0.5
4. Gasket to ASTM C-443 specification (by others).
5. Concrete cover to be Min.25mm.
6. All dimensions to be millimeter.
7. Welded wire mesh overlap to be 300mm.
8. Manhole design and construction to MMCD manhole specification section 33 44 01.
9. Manufacturing tolerance to be +/- 5mm.
10. Concrete Exposure Class to be A-3
11. Min. Stripping Strength to be 15MPa
12. All Formed Finishes to be Standard Grade
13. All Unformed Finishes to be Steel Trowelled Finish or Wood Float Finish
14. Lifting cable and accessories to meet the strength requirement in lifting detail
15. Hoisting and Rigging system to meet WORK SAFE BC OHS Regulation Guideline Part 14/15



Description:

2438 Donut Lid Hatch Opening

96 Donut Lid Hatch Opening 8560 #

Project:

Drawn :

D.L.

Approved :

V.W.

Rev. No.

B

Date :

19/01/2018

Load Rating:

H2O RATED

Scale :

As Shown

Catalog No.

9615DLH

Dwg. No.

96-10

Sheet No.

1 OF 1