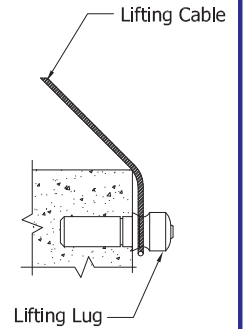
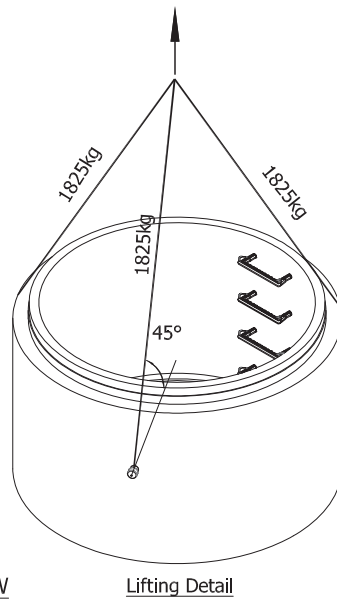
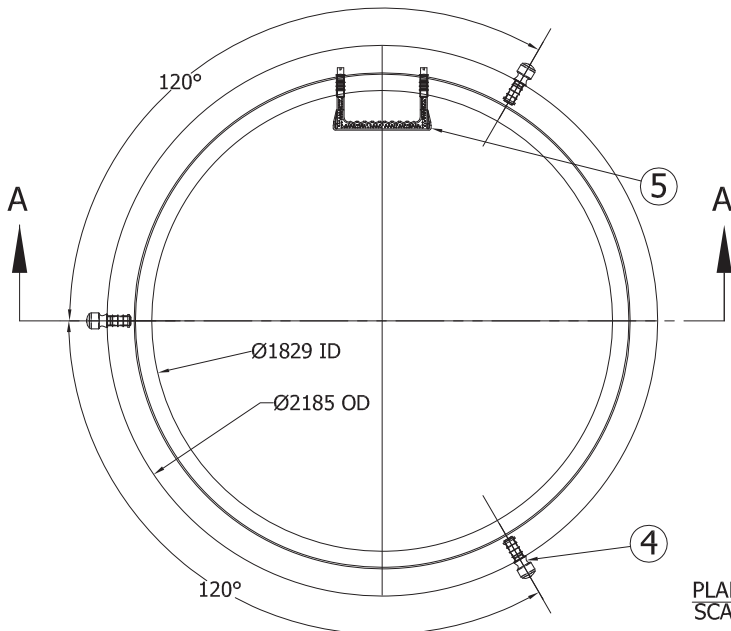
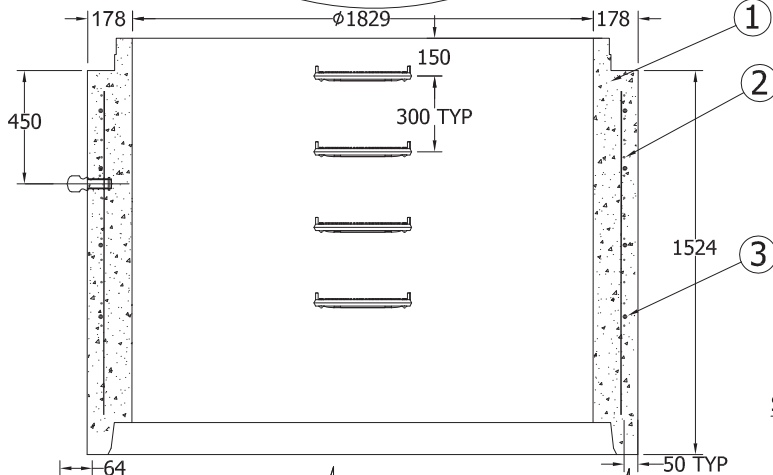


# 7260R

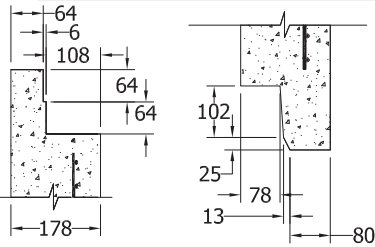


PLAN VIEW  
SCALE 1:30

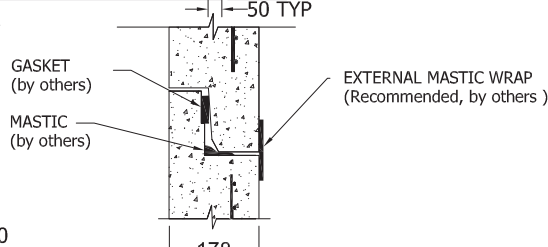
Lifting Detail



SECTION A-A  
SCALE 1:30



TONGUE & GROOVE DETAIL  
SCALE 1 : 15



SUGGESTED JOINT DETAIL  
SCALE 1 : 15

**Specification and General Notes:**

REV. B

1. Manhole design/manufacture to ASTM C478M Specification.
2. Concrete testing to current version of ASTM C497/CSA 23.1&2.
3. Min. concrete compressive strength 30 MPa with Max. W/C ratio of 0.5
4. Gasket to ASTM C-443 specification (by others).
5. Concrete cover to be Min.25mm.
6. All dimensions to be millimeter.
7. Welded wire mesh overlap to be 300mm.
8. Manhole design and construction to MMCD manhole specification section 02725.
9. Manufacturing tolerance to be +/- 5mm.
10. Concrete Exposure Class to be A-3
11. Min. Stripping Strength to be 15MPa
12. All Form Finish to be Standard Grade
13. All Unformed Finish to be Steel Trowelled Finish or Wood Float Finish
14. Lifting cable and accessories to meet the strength requirement in lifting detail
15. Hoisting and Rigging system to meet WORK SAFE BC OHS Regulation Guideline Part 14/15



Description:	<b>1829ID x 1524H Manhole Riser</b>	
	72"ID x 60"H Manhole Riser 8854#	
	Project:	

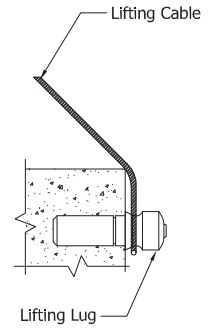
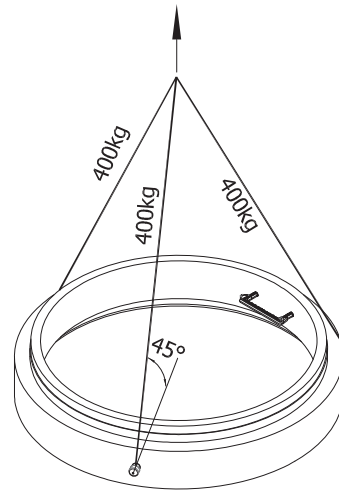
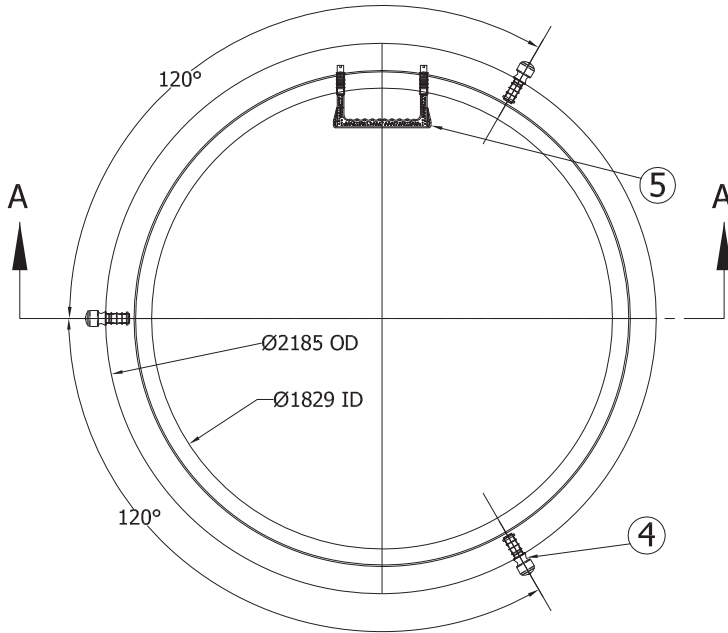
Drawn : D.L.	Date : 09/03/2016	Catalog No. <b>7260R</b>
Approved : V.W.	Load Rating: N/A	
Rev. No. B	Scale : As Shown	Dwg. No. <b>72-11</b>

7520 Conrad Street Burnaby, B.C. V5A 2H7 Phone : 604-415-5181 Fax : 604-415-5185  
www.diamondprecast.com

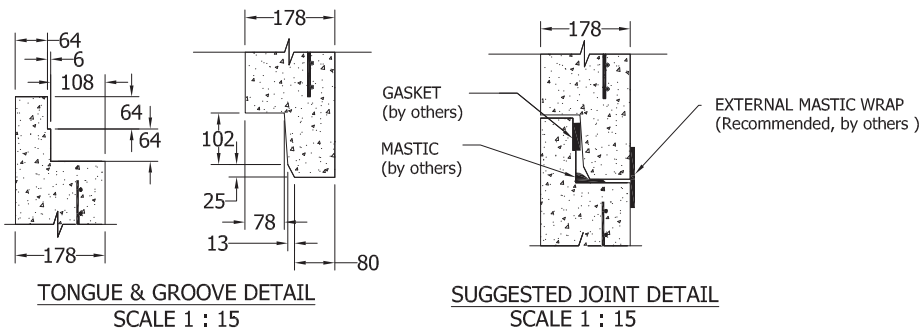
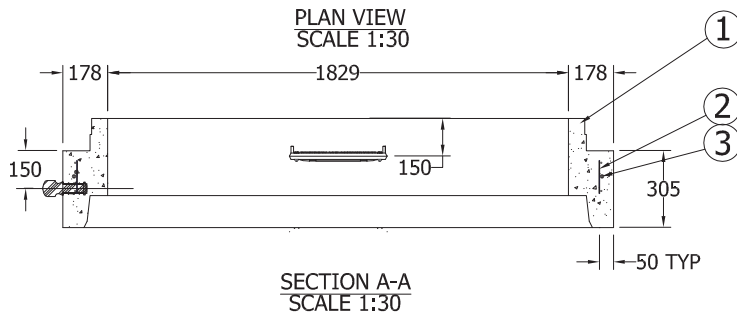
This drawing is the property of the Diamond Precast Concrete. All information contained herein is confidential and may not be used in whole or in part without written permission from the owner

Sheet No.  
1 OF 1

# 7212R



Lifting Detail



**Specification and General Notes:**

1. Manhole design/manufacture to ASTM C478M Specification.
2. Concrete testing to current version of ASTM C497/CSA 23.1&2.
3. Min. concrete compressive strength 30 MPa with Max. W/C ratio of 0.5
4. Gasket to ASTM C-443 specification (by others).
5. Concrete cover to be Min. 25mm.
6. All dimensions to be millimeter.
7. Welded wire mesh overlap to be 300mm.
8. Manhole design and construction to MMCD manhole specification section 02725.
9. Manufacturing tolerance to be +/- 5mm.
10. Concrete Exposure Class to be A-3
11. Min. Stripping Strength to be 15MPa
12. All Form Finish to be Standard Grade
13. All Unformed Finish to be Steel Trowelled Finish or Wood Float Finish
14. Lifting cable and accessories to meet the strength requirement in lifting detail
15. Hoisting and Rigging system to meet WORK SAFE BC OHS Regulation Guideline Part 14/15

REV. B



Description:  
**1829ID x 305H Manhole Riser**

72"ID x 12"H Manhole Riser 1770 #

Project:

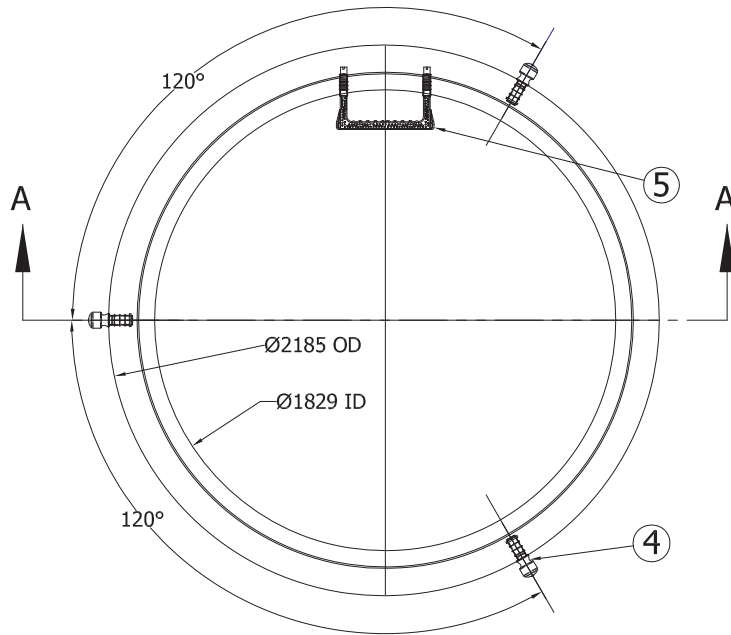
Drawn : D.L.	Date : 09/03/2016	Catalog No. <b>7212R</b>
Approved : V.W.	Load Rating: N/A	
Rev. No. B	Scale : As Shown	Dwg. No. <b>72-01</b>

7520 Conrad Street Burnaby, B.C. V5A 2H7 Phone : 604-415-5181 Fax : 604-415-5185  
www.diamondprecast.com

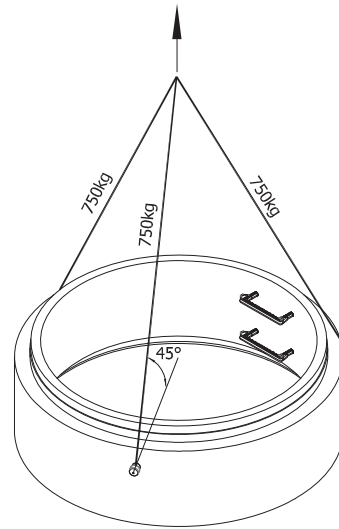
This drawing is the property of the Diamond Precast Concrete. All information contained herein is confidential and may not be used in whole or in part without written permission from the owner

Sheet No.  
1 OF 1

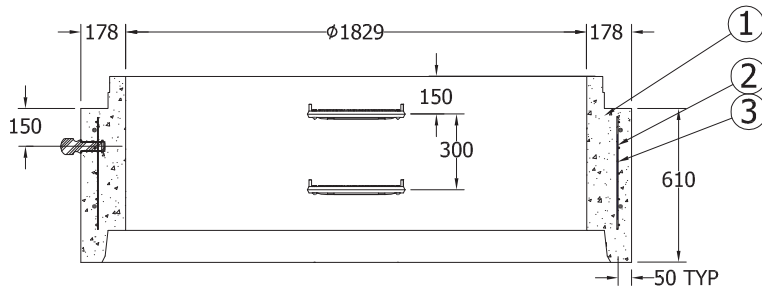
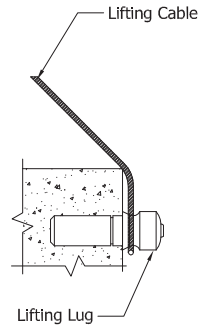
# 7224R



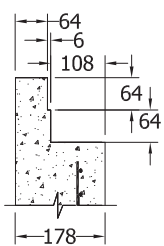
PLAN VIEW  
SCALE 1:30



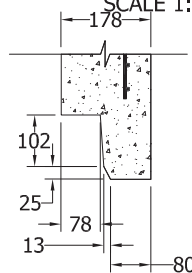
Lifting Detail



SECTION A-A  
SCALE 1:30



TONGUE & GROOVE DETAIL  
SCALE 1:15



SUGGESTED JOINT DETAIL  
SCALE 1:15

**Specification and General Notes:**

1. Manhole design/manufacture to ASTM C478M Specification.
2. Concrete testing to current version of ASTM C497/CSA 23.1&2.
3. Min. concrete compressive strength 30 MPa with Max. W/C ratio of 0.5
4. Gasket to ASTM C-443 specification (by others).
5. Concrete cover to be Min. 25mm.
6. All dimensions to be millimeter.
7. Welded wire mesh overlap to be 300mm.
8. Manhole design and construction to MMCD manhole specification section 02725.
9. Manufacturing tolerance to be +/- 5mm.
10. Concrete Exposure Class to be A-3
11. Min. Stripping Strength to be 15MPa
12. All Form Finish to be Standard Grade
13. All Unformed Finish to be Steel Trowelled Finish or Wood Float Finish
14. Lifting cable and accessories to meet the strength requirement in lifting detail
15. Hoisting and Rigging system to meet WORK SAFE BC OHS Regulation Guideline Part 14/15

REV. B



Description:  
**1829ID x 610H Manhole Riser**

72"ID x 24"H Manhole Riser 3541#

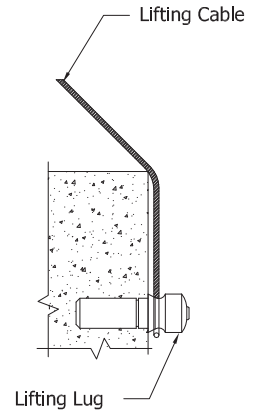
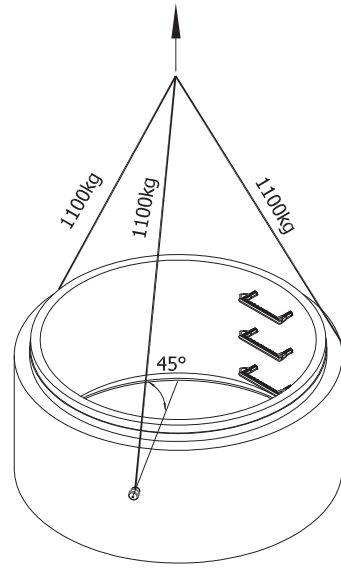
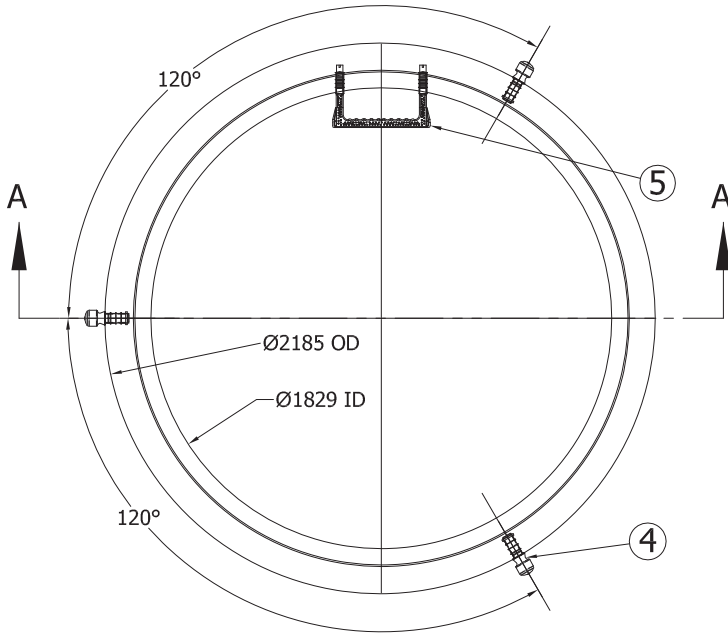
Project:

Drawn : D.L.	Date : 09/03/2016	Catalog No. <b>7224R</b>
Approved : V.W.	Load Rating: N/A	Dwg. No. <b>72-02</b>
Rev. No. B	Scale : As Shown	Sheet No. 1 OF 1

7520 Conrad Street Burnaby, B.C. V5A 2H7 Phone : 604-415-5181 Fax : 604-415-5185  
www.diamondprecast.com

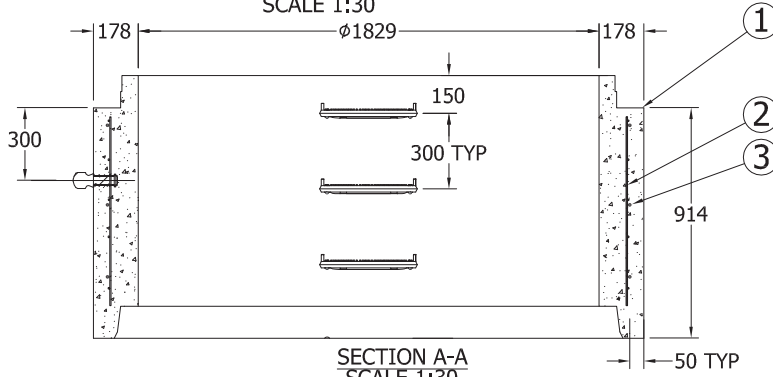
This drawing is the property of the Diamond Precast Concrete. All information contained herein is confidential and may not be used in whole or in part without written permission from the owner

**7236R**

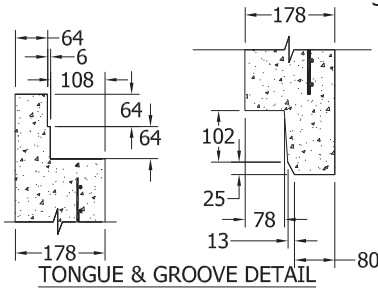


PLAN VIEW  
SCALE 1:30

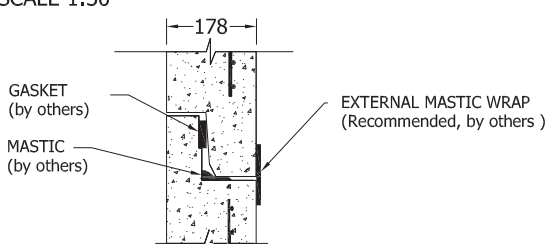
Lifting Detail



SECTION A-A  
SCALE 1:30



TONGUE & GROOVE DETAIL  
SCALE 1 : 15



SUGGESTED JOINT DETAIL  
SCALE 1 : 15

**Specification and General Notes:**

REV.B

1. Manhole design/manufacture to ASTM C478M Specification.
2. Concrete testing to current version of ASTM C497/CSA 23.1&2.
3. Min. concrete compressive strength 30 MPa with Max. W/C ratio of 0.5
4. Gasket to ASTM C-443 specification (by others).
5. Concrete cover to be Min.25mm.
6. All dimensions to be millimeter.
7. Welded wire mesh overlap to be 300mm.
8. Manhole design and construction to MMCD manhole specification section 02725.
9. Manufacturing tolerance to be +/- 5mm.
10. Concrete Exposure Class to be A-3
11. Min. Stripping Strength to be 15MPa
12. All Form Finish to be Standard Grade
13. All Unformed Finish to be Steel Trowelled Finish or Wood Float Finish
14. Lifting cable and accessories to meet the strength requirement in lifting detail
15. Hoisting and Rigging system to meet WORK SAFE BC OHS Regulation Guideline Part 14/15



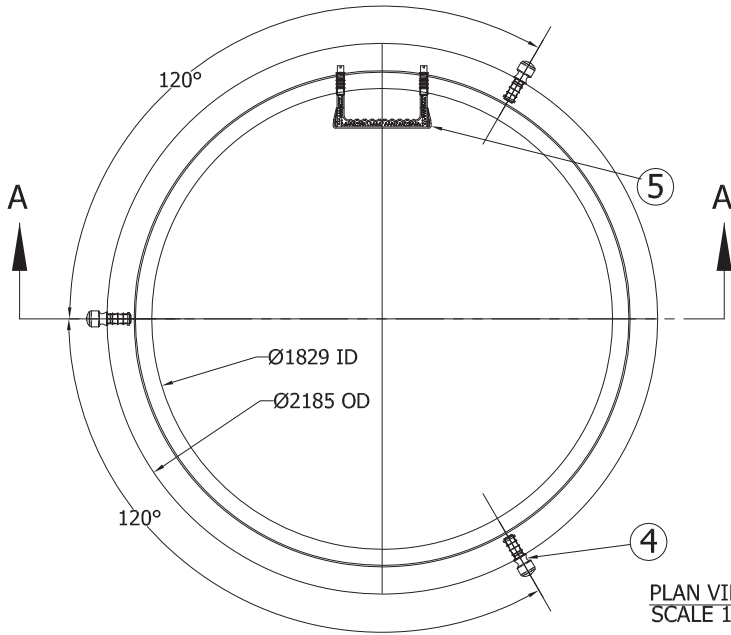
Description:  
**1829ID x 914H Manhole Riser**

72"ID x 36"H Manhole Riser 5325 #

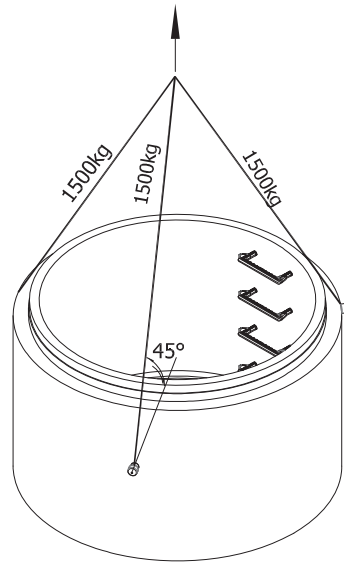
Project:

Drawn : D.L.	Date : 09/03/2016	Catalog No. <b>7236R</b>
Approved : V.W.	Load Rating: N/A	Dwg. No.
Rev. No. B	Scale : As Shown	<b>72-04</b>

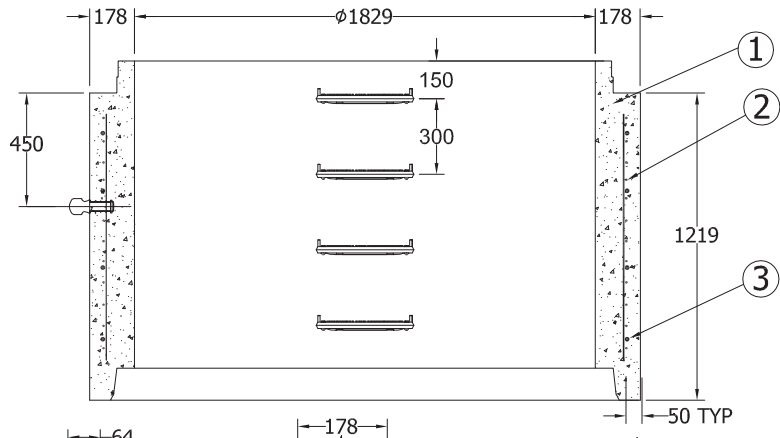
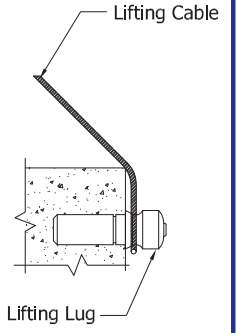
# 7248R



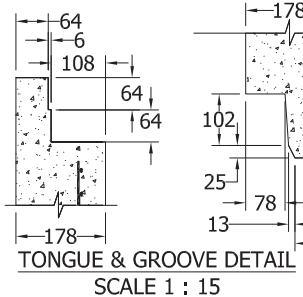
PLAN VIEW  
SCALE 1:30



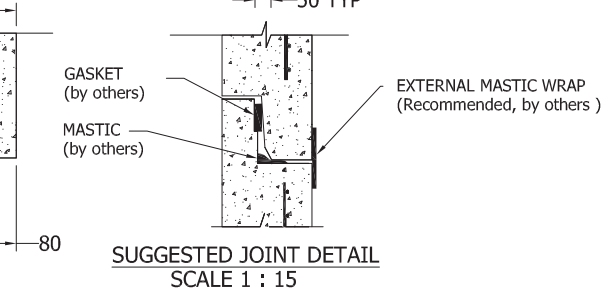
Lifting Detail



SECTION A-A  
SCALE 1:30



TONGUE & GROOVE DETAIL  
SCALE 1 : 15



SUGGESTED JOINT DETAIL  
SCALE 1 : 15

**Specification and General Notes:**

REV.B

1. Manhole design/manufacture to ASTM C478M Specification.
2. Concrete testing to current version of ASTM C497/CSA 23.1&2.
3. Min. concrete compressive strength 30 MPa with Max. W/C ratio of 0.5
4. Gasket to ASTM C-443 specification (by others).
5. Concrete cover to be Min.25mm.
6. All dimensions to be millimeter.
7. Welded wire mesh overlap to be 300mm.
8. Manhole design and construction to MMCD manhole specification section 02725.
9. Manufacturing tolerance to be +/- 5mm.
10. Concrete Exposure Class to be A-3
11. Min. Stripping Strength to be 15MPa
12. All Form Finish to be Standard Grade
13. All Unformed Finish to be Steel Trowelled Finish or Wood Float Finish
14. Lifting cable and accessories to meet the strength requirement in lifting detail
15. Hoisting and Rigging system to meet WORK SAFE BC OHS Regulation Guideline Part 14/15



Description:  
**1829ID x 1219H Manhole Riser**

72"ID x 48"H Manhole Riser 7032 #

Project:

Drawn : D.L.	Date : 09/03/2016	Catalog No. <b>7248R</b>
Approved : V.W.	Load Rating: N/A	
Rev. No. B	Scale : As Shown	Dwg. No. <b>72-06</b>

7520 Conrad Street Burnaby, B.C. V5A 2H7 Phone : 604-415-5181 Fax : 604-415-5185  
www.diamondprecast.com

This drawing is the property of the Diamond Precast Concrete. All information contained herein is confidential and may not be used in whole or in part without written permission from the owner

Sheet No.  
1 OF 1