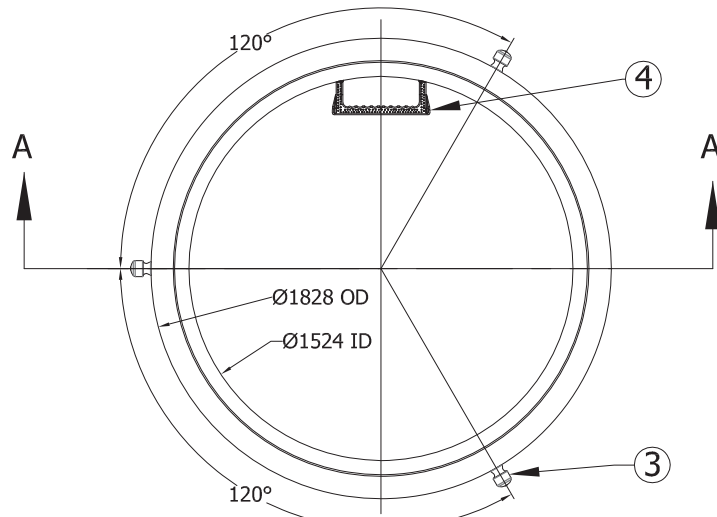
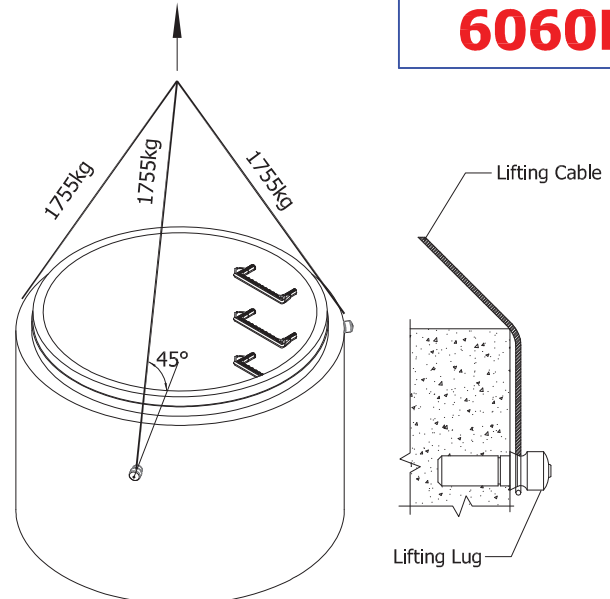


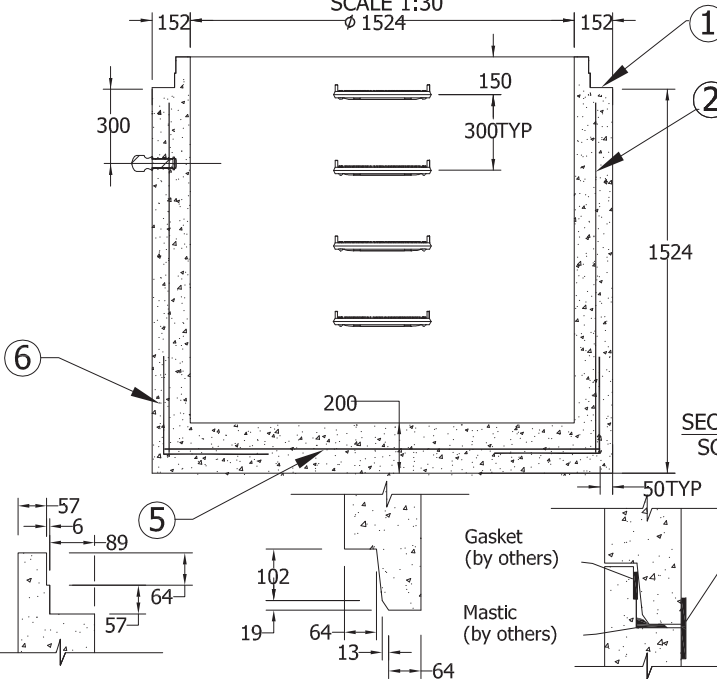
**6060B**



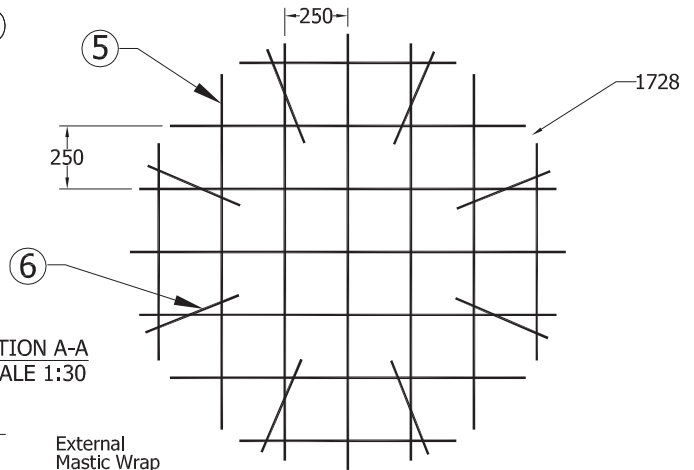
PLAN VIEW  
SCALE 1:30



Lifting Detail



SECTION A-A  
SCALE 1:30



BASE REINFORCEMENT PLAN VIEW  
SCALE 1:30

TONGUE & GROOVE DETAIL  
SCALE 1 : 15

SUGGESTED JOINT DETAIL  
SCALE 1 : 15

**Specification and General Notes:**

1. Manhole design/manufacture to ASTM C478M Specification.
2. Concrete testing to current version of ASTM C497/CSA 23.1&2.
3. Min. concrete compressive strength 30 MPa with Max. W/C ratio of 0.5
4. Gasket to ASTM C-443 specification (by others).
5. Concrete cover to be Min.25mm.
6. All dimensions to be millimeter.
7. Welded wire mesh overlap to be 300mm.
8. Manhole design and construction to MMCD manhole specification section 02725.
9. Manufacturing tolerance to be +/- 5mm.
10. Concrete Exposure Class to be A-3
11. Min. Stripping Strength to be 15MPa
12. All Form Finish to be Standard Grade
13. All Unformed Finish to be Steel Trowelled Finish or Wood Float Finish
14. Lifting cable and accessories to meet the strength requirement in lifting detail
15. Hoisting and Rigging system to meet WORK SAFE BC OHS Regulation Guideline Part 14/15



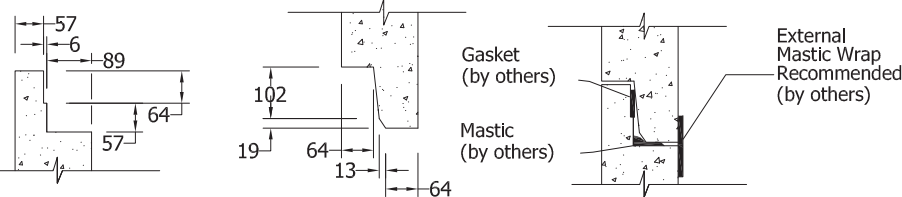
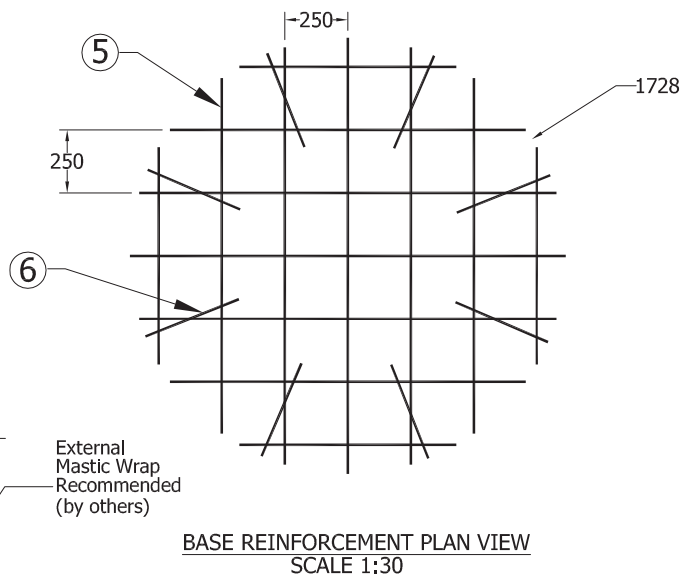
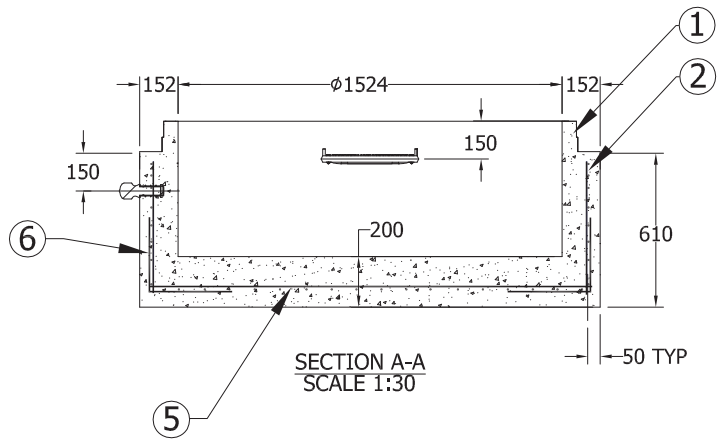
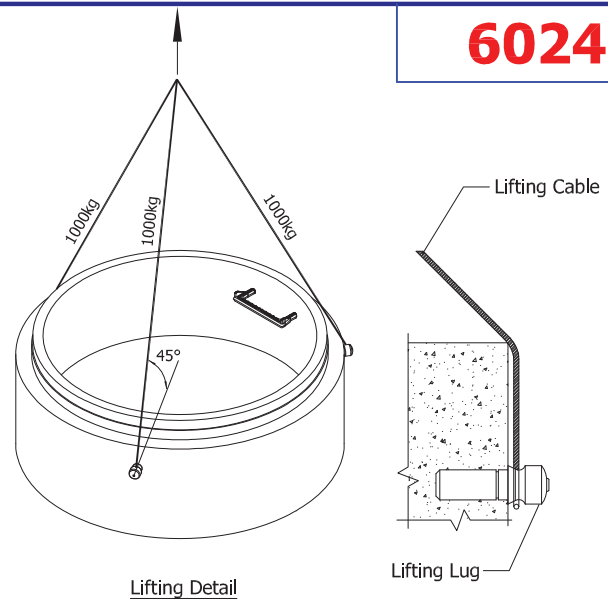
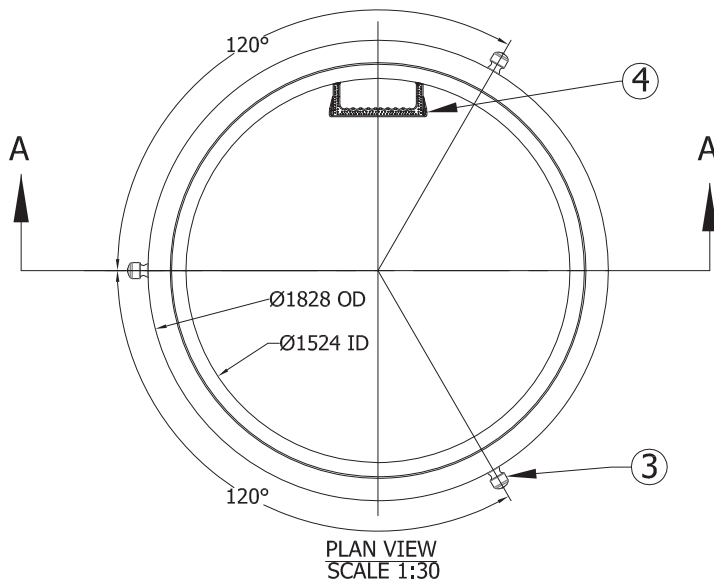
Description:	<b>1524ID x 1524H Manhole Base</b>	
	60"ID x 60"H Manhole Base 8192 #	
Project:		

Drawn :	Date :	Catalog No.
D.L	07/03/2016	
Approved :	Load Rating:	<b>6060B</b>
V.W.	H20 RATED	
Rev. No.	Scale :	<b>60-12</b>
B	As Shown	

7520 Conrad Street Burnaby, B.C. V5A 2H7 Phone : 604-415-5181 Fax : 604-415-5185  
www.diamondprecast.com

This drawing is the property of the Diamond Precast Concrete. All information contained herein is confidential and may not be used in whole or in part without written permission from the owner.

Sheet No.  
1 OF 1



**Specification and General Notes:**

1. Manhole design/manufacture to ASTM C478M Specification.
2. Concrete testing to current version of ASTM C497/CSA 23.1&2.
3. Min. concrete compressive strength 30 MPa with Max. W/C ratio of 0.5
4. Gasket to ASTM C-443 specification (by others).
5. Concrete cover to be Min.25mm.
6. All dimensions to be millimeter.
7. Welded wire mesh overlap to be 300mm.
8. Manhole design and construction to MMCD manhole specification section 02725.
9. Manufacturing tolerance to be +/- 5mm.
10. Concrete Exposure Class to be A-3
11. Min. Stripping Strength to be 15MPa
12. All Form Finish to be Standard Grade
13. All Unformed Finish to be Steel Trowelled Finish or Wood Float Finish
14. Lifting cable and accessories to meet the strength requirement in lifting detail
15. Hoisting and Rigging system to meet WORK SAFE BC OHS Regulation Guideline Part 14/15



Description:  
**1524ID x 610H Manhole Base**

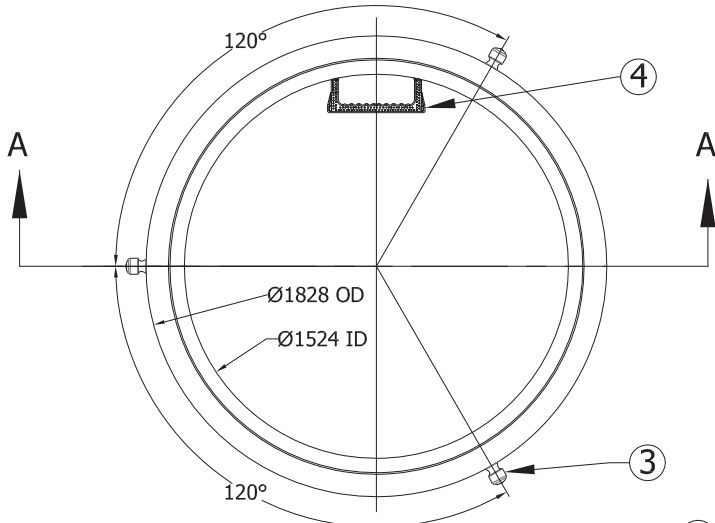
60"ID x 24"H Manhole Base 4764 #

Project:

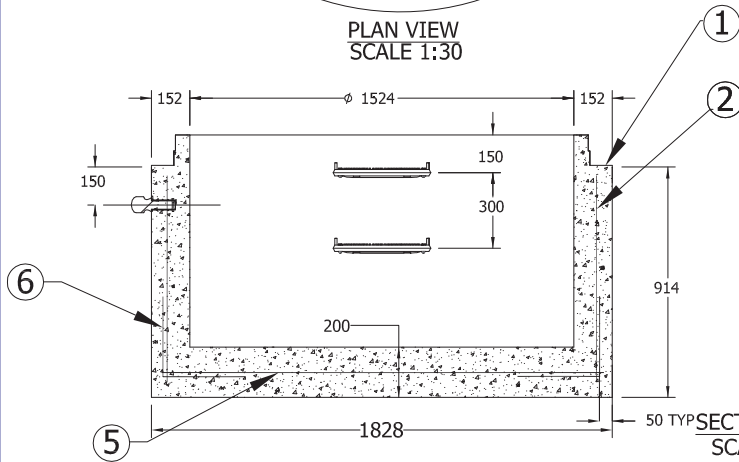
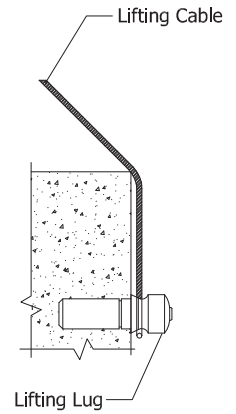
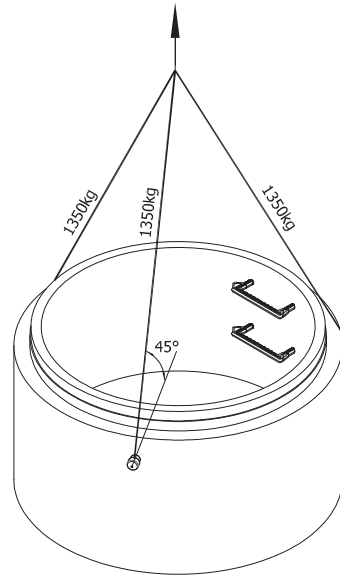
Drawn : D.L.	Date : 07/03/2016	Catalog No. <b>6024B</b>
Approved : V.W.	Load Rating: H20 RATED	Dwg. No. <b>60-02</b>
Rev. No. B	Scale : As Shown	Sheet No. 1 OF 1

This drawing is the property of the Diamond Precast Concrete. All information contained herein is confidential and may not be used in whole or in part without written permission from the owner.

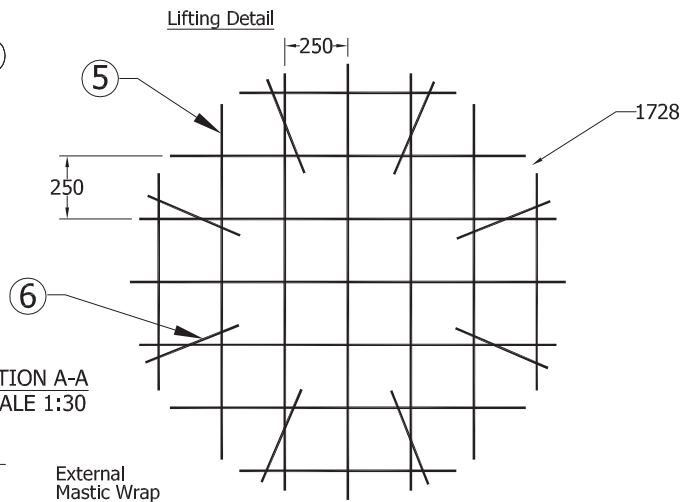
**6036B**



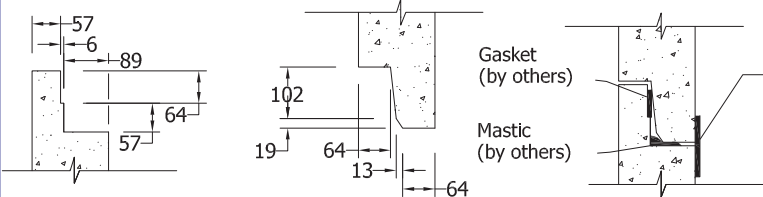
PLAN VIEW  
SCALE 1:30



SECTION A-A  
SCALE 1:30



BASE REINFORCEMENT PLAN VIEW  
SCALE 1:30



TONGUE & GROOVE DETAIL  
SCALE 1 : 15

SUGGESTED JOINT DETAIL  
SCALE 1 : 15

**Specification and General Notes:**

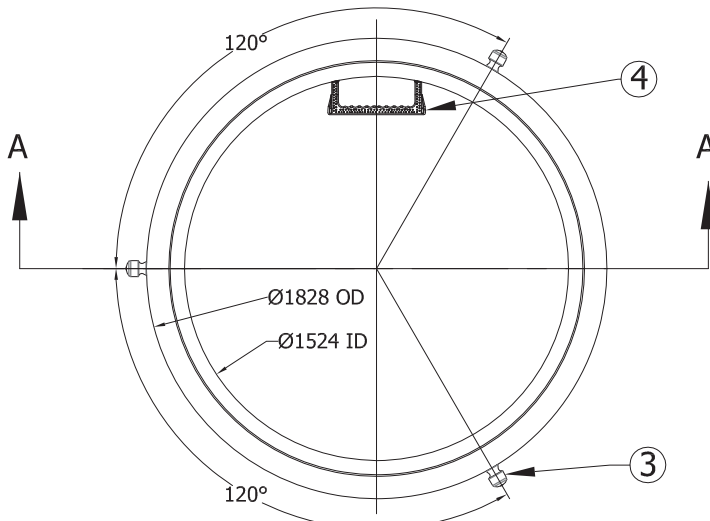
1. Manhole design/manufacture to ASTM C478M Specification.
2. Concrete testing to current version of ASTM C497/CSA 23.1&2.
3. Min. concrete compressive strength 30 MPa with Max. W/C ratio of 0.5
4. Gasket to ASTM C-443 specification (by others).
5. Concrete cover to be Min.25mm.
6. All dimensions to be millimeter.
7. Welded wire mesh overlap to be 300mm.
8. Manhole design and construction to MMCD manhole specification section 02725.
9. Manufacturing tolerance to be +/- 5mm.
10. Concrete Exposure Class to be A-3
11. Min. Stripping Strength to be 15MPa
12. All Form Finish to be Standard Grade
13. All Unformed Finish to be Steel Trowelled Finish or Wood Float Finish
14. Lifting cable and accessories to meet the strength requirement in lifting detail
15. Hoisting and Rigging system to meet WORK SAFE BC OHS Regulation Guideline Part 14/15



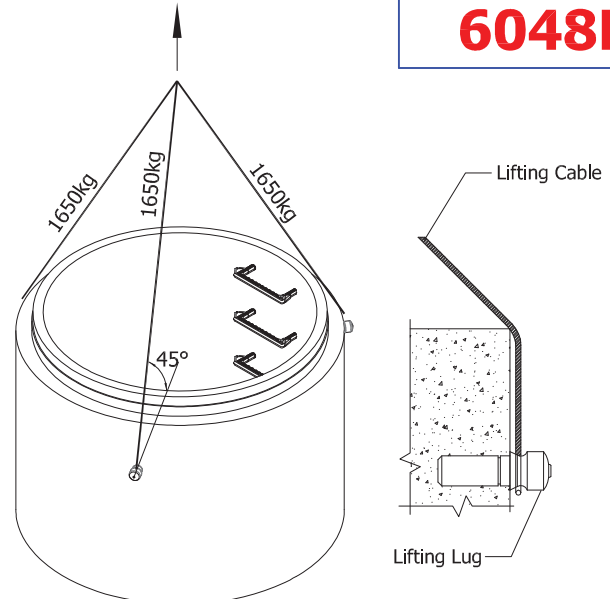
Description:	<b>1524ID x 914H Manhole Base</b>	
	60"ID x 36"H Manhole Base 6203 #	
Project:		

Drawn :	Date :
D.L	07/03/2016
Approved :	Load Rating:
V.W.	H20 RATED
Rev. No.	Scale :
B	As Shown

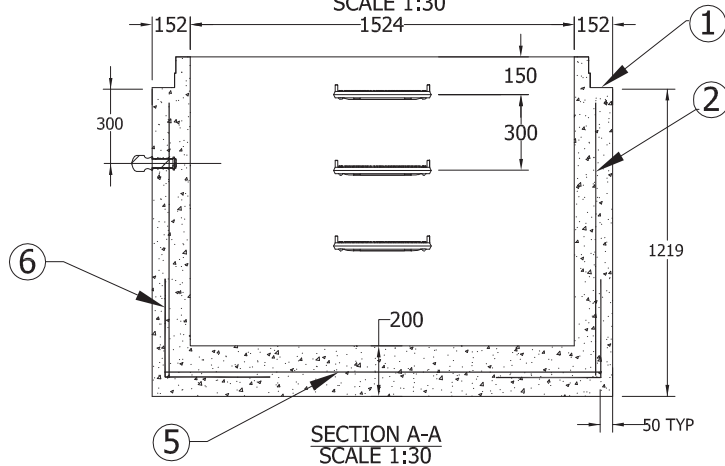
Catalog No.	<b>6036B</b>
Dwg. No.	
	<b>60-04</b>



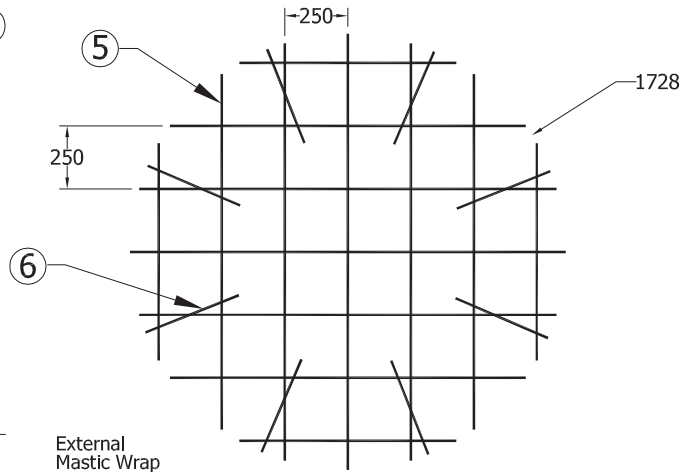
PLAN VIEW  
SCALE 1:30



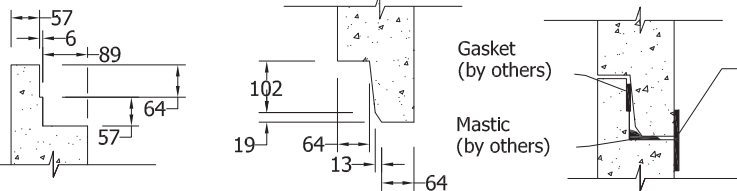
Lifting Detail



SECTION A-A  
SCALE 1:30



BASE REINFORCEMENT PLAN VIEW  
SCALE 1:30



TONGUE & GROOVE DETAIL  
SCALE 1 : 15

SUGGESTED JOINT DETAIL  
SCALE 1 : 15

**Specification and General Notes:**

1. Manhole design/manufacture to ASTM C478M Specification.
2. Concrete testing to current version of ASTM C497/CSA 23.1&2.
3. Min. concrete compressive strength 30 MPa with Max. W/C ratio of 0.5
4. Gasket to ASTM C-443 specification (by others).
5. Concrete cover to be Min.25mm.
6. All dimensions to be millimeter.
7. Welded wire mesh overlap to be 300mm.
8. Manhole design and construction to MMCD manhole specification section 02725.
9. Manufacturing tolerance to be +/- 5mm.
10. Concrete Exposure Class to be A-3
11. Min. Stripping Strength to be 15MPa
12. All Form Finish to be Standard Grade
13. All Unformed Finish to be Steel Trowelled Finish or Wood Float Finish
14. Lifting cable and accessories to meet the strength requirement in lifting detail
15. Hoisting and Rigging system to meet WORK SAFE BC OHS Regulation Guideline Part 14/15



Description:	<b>1524ID x 1219H Manhole Base</b>	
	60"ID x 48"H Manhole Base 7642 #	
Project:		

Drawn :	Date :	Catalog No.
D.L	07/03/2016	
Approved :	Load Rating:	Dwg. No.
V.W.	H20 RATED	
Rev. No.	Scale :	<b>60-06</b>
B	As Shown	