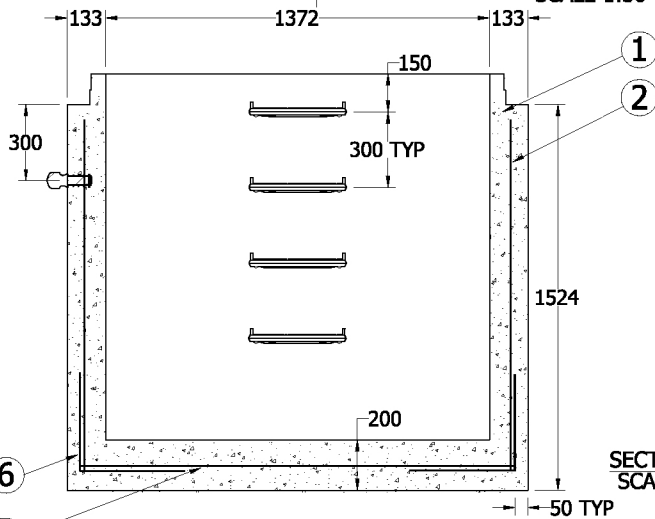
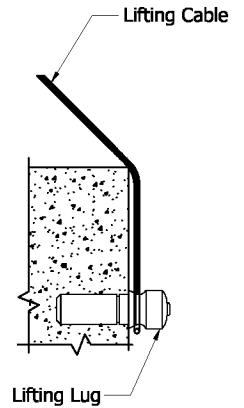
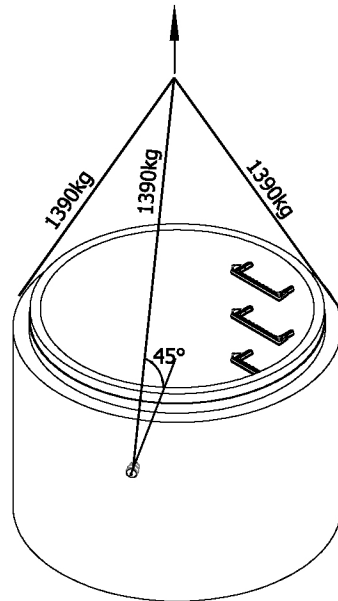
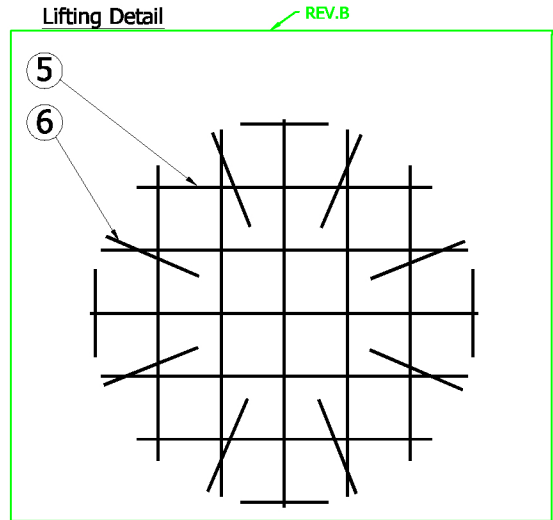


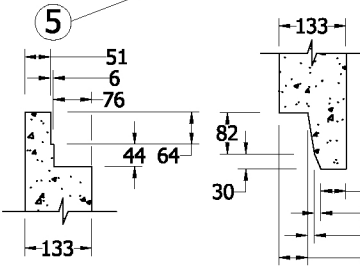
PLAN VIEW
SCALE 1:30



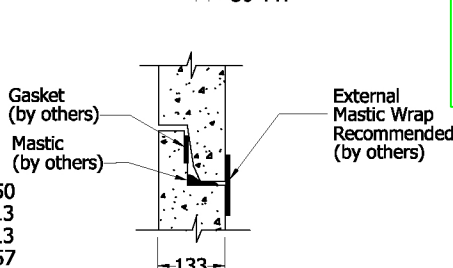
SECTION A-A
SCALE 1:30



BOTTOM REINFORCEMENT PLAN VIEW
SCALE 1:30



TONGUE & GROOVE DETAIL
SCALE 1 : 15



SUGGESTED JOINT DETAIL
SCALE 1 : 15

Specification and General Notes:

1. Manhole design/manufacture to ASTM C478M Specification.
2. Concrete testing to ASTM C497/CSA 23.1 & 2-09.
3. Min. concrete compressive strength 30 MPa with Max. W/C ratio of 0.5
4. Gasket to ASTM C-443 specification (by others).
5. Concrete cover to be Min.25mm.
6. All dimensions to be millimeter.
7. Welded wire mesh overlap to be 300mm.
8. Manhole design and construction to MMCD manhole specification section 02725.
9. Manufacturing tolerance to be +/- 5mm.
10. Concrete Exposure Class to be A-3
11. Min. Stripping Strength to be 15MPa
12. All Form Finish to be Standard Grade
13. All Unformed Finish to be Steel Trowelled Finish or Wood Float Finish
14. Lifting cable and accessories to meet the strength requirement in lifting detail
15. Hoisting and Rigging system to meet WORK SAFE BC OHS Regulation Guideline Part 14/15



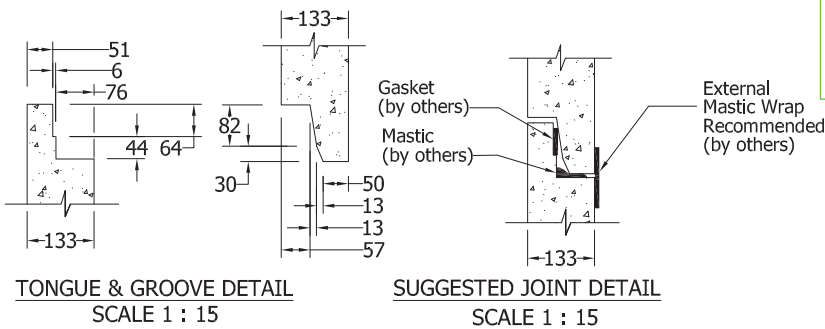
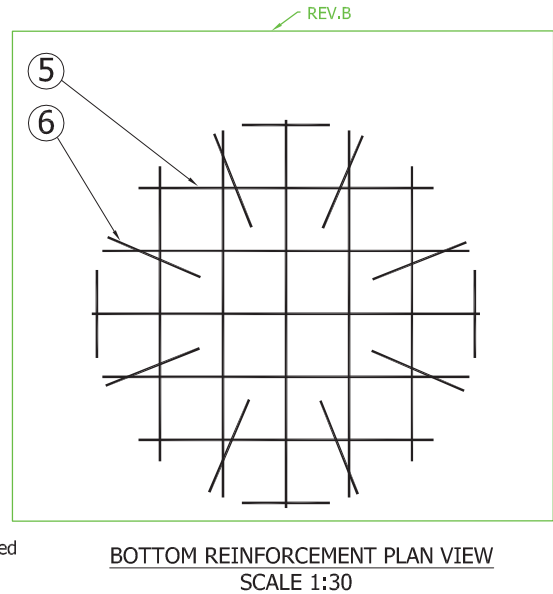
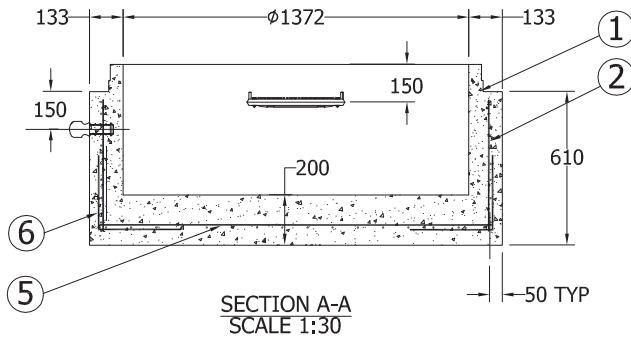
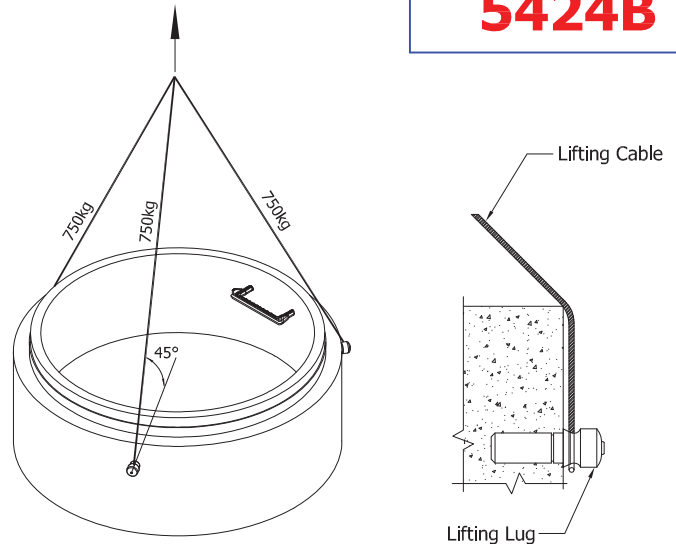
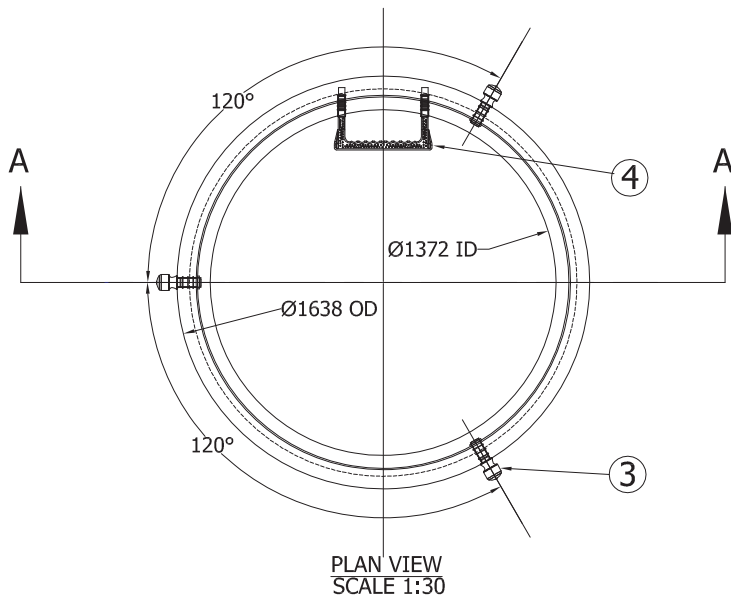
Description:
1372ID x 1524H Manhole Base

54"ID x 60"H Manhole Base 6495 #

Project:

Drawn : D.L.	Date : 07/03/2016	Catalog No. 5460B
Approved : V.W.	Load Rating: H20 RATED	Dwg. No. 54-08
Rev. No. B	Scale : As Shown	Sheet No. 1 OF 1

5424B



- Specification and General Notes:**
1. Manhole design/manufacture to ASTM C478M Specification.
 2. Concrete testing to current version of ASTM C497/CSA 23.1&2.
 3. Min. concrete compressive strength 30 MPa with Max. W/C ratio of 0.5
 4. Gasket to ASTM C-443 specification (by others).
 5. Concrete cover to be Min.25mm.
 6. All dimensions to be millimeter.
 7. Welded wire mesh overlap to be 300mm.
 8. Manhole design and construction to MMCD manhole specification section 02725.
 9. Manufacturing tolerance to be +/- 5mm.
 10. Concrete Exposure Class to be A-3
 11. Min. Stripping Strength to be 15MPa
 12. All Form Finish to be Standard Grade
 13. All Unformed Finish to be Steel Trowelled Finish or Wood Float Finish
 14. Lifting cable and accessories to meet the strength requirement in lifting detail
 15. Hoisting and Rigging system to meet WORK SAFE BC OHS Regulation Guideline Part 14/15

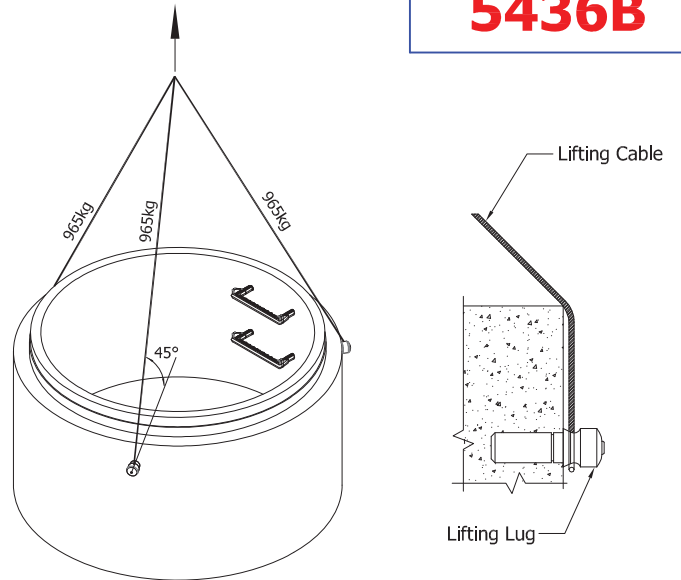
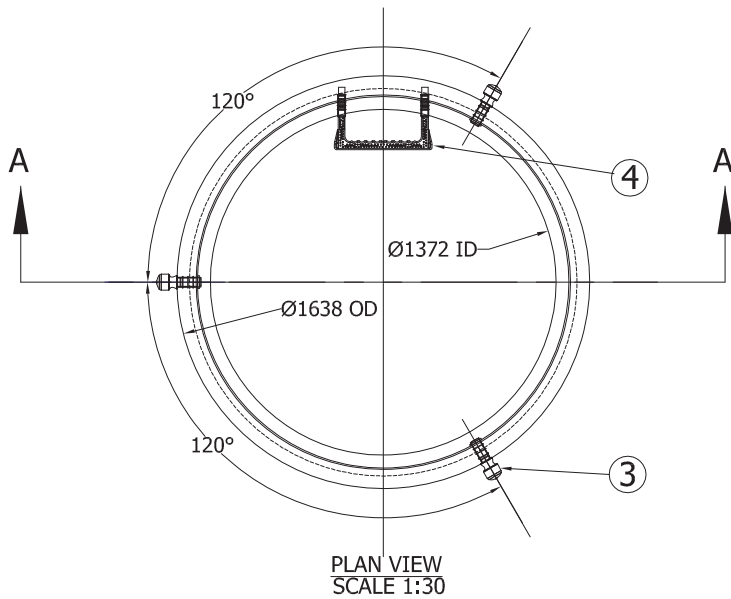


Description:
1372ID x 610H Manhole Base
 54"ID x 24"H Manhole Base 3511 #
Project:

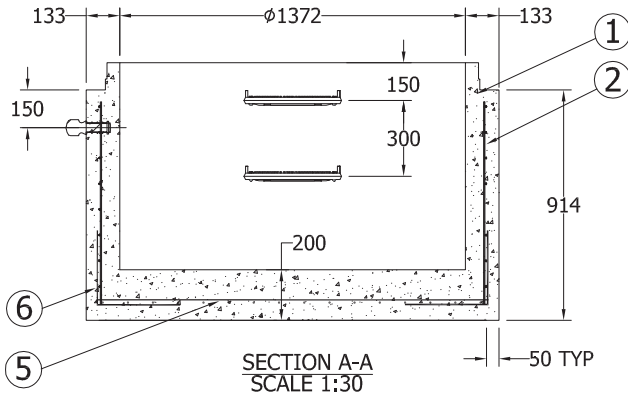
Drawn :
D.L.
Date :
07/03/2016
Approved :
V.W.
Load Rating:
H20 RATED
Rev. No.
B
Scale :
As Shown

Catalog No.
5424B
Dwg. No.
54-02
Sheet No.
1 OF 1

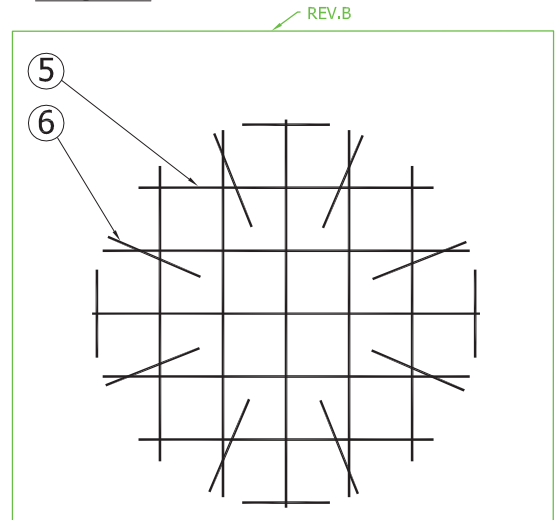
5436B



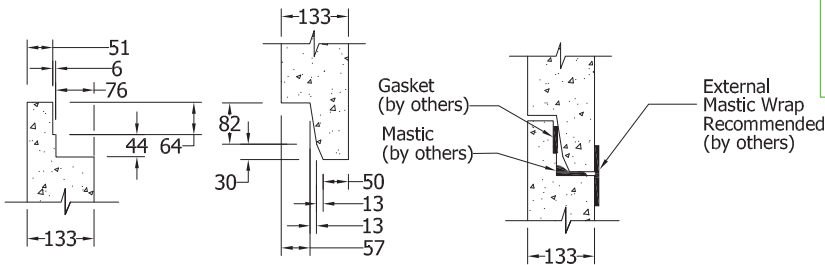
Lifting Detail



SECTION A-A
SCALE 1:30



BOTTOM REINFORCEMENT PLAN VIEW
SCALE 1:30



TONGUE & GROOVE DETAIL
SCALE 1:15

SUGGESTED JOINT DETAIL
SCALE 1:15

Specification and General Notes:

1. Manhole design/manufacture to ASTM C478M Specification.
2. Concrete testing to current version of ASTM C497/CSA 23.1&2.
3. Min. concrete compressive strength 30 MPa with Max. W/C ratio of 0.5
4. Gasket to ASTM C-443 specification (by others).
5. Concrete cover to be Min.25mm.
6. All dimensions to be millimeter.
7. Welded wire mesh overlap to be 300mm.
8. Manhole design and construction to MMCD manhole specification section 02725.
9. Manufacturing tolerance to be +/- 5mm.
10. Concrete Exposure Class to be A-3
11. Min. Stripping Strength to be 15MPa
12. All Form Finish to be Standard Grade
13. All Unformed Finish to be Steel Trowelled Finish or Wood Float Finish
14. Lifting cable and accessories to meet the strength requirement in lifting detail
15. Hoisting and Rigging system to meet WORK SAFE BC OHS Regulation Guideline Part 14/15



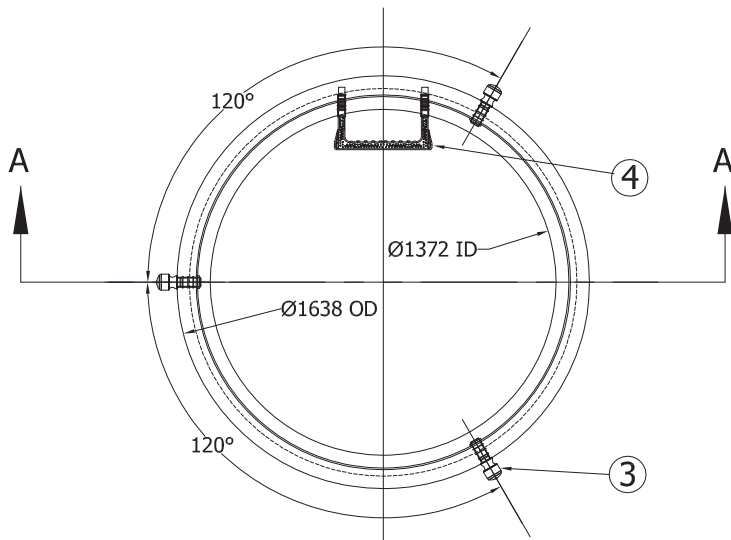
Description:
1372ID x 914H Manhole Base

54"ID x 36"H Manhole Base 4508 #

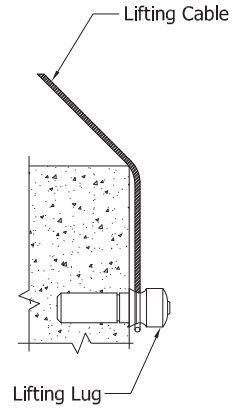
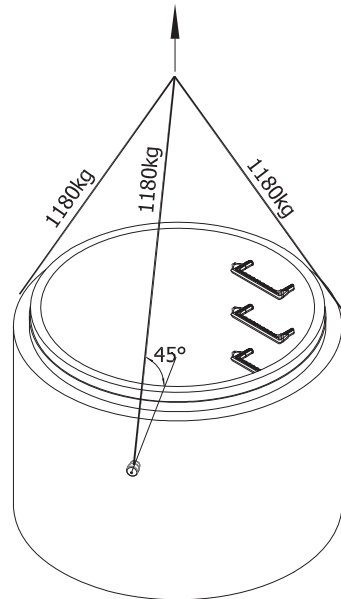
Project:

Drawn : D.L	Date : 07/03/2016	Catalog No. 5436B
Approved : V.W.	Load Rating: H20 RATED	Dwg. No. 54-04
Rev. No. B	Scale : As Shown	Sheet No. 1 OF 1

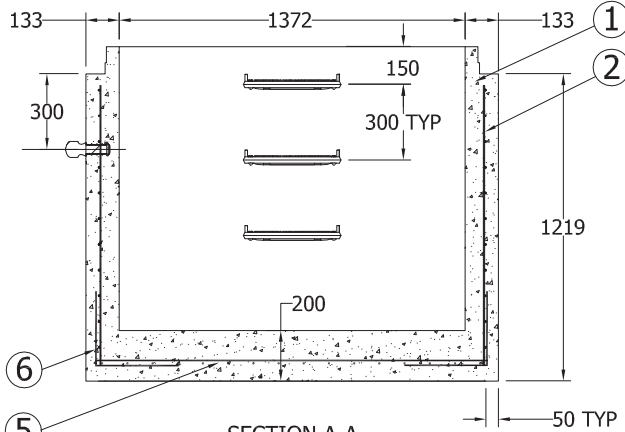
5448B



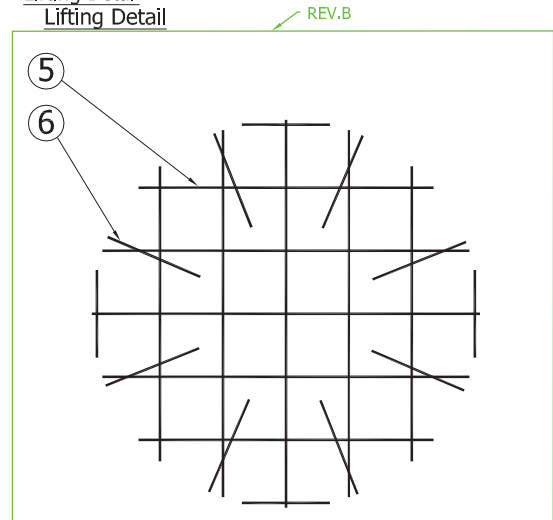
PLAN VIEW
SCALE 1:30



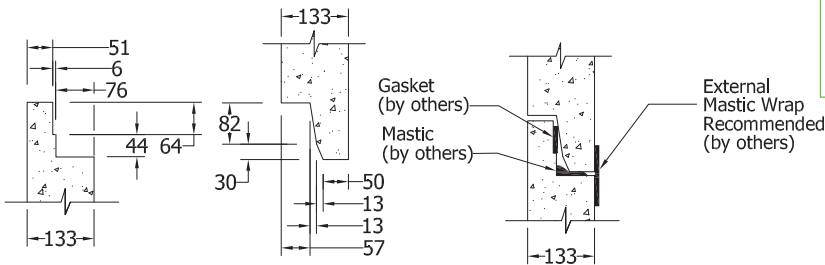
Lifting Detail
Lifting Detail



SECTION A-A
SCALE 1:30



BOTTOM REINFORCEMENT PLAN VIEW
SCALE 1:30



TONGUE & GROOVE DETAIL
SCALE 1 : 15

SUGGESTED JOINT DETAIL
SCALE 1 : 15

Specification and General Notes:

1. Manhole design/manufacture to ASTM C478M Specification.
2. Concrete testing to current version of ASTM C497/CSA 23.1&2.
3. Min. concrete compressive strength 30 MPa with Max. W/C ratio of 0.5
4. Gasket to ASTM C-443 specification (by others).
5. Concrete cover to be Min.25mm.
6. All dimensions to be millimeter.
7. Welded wire mesh overlap to be 300mm.
8. Manhole design and construction to MMCD manhole specification section 02725.
9. Manufacturing tolerance to be +/- 5mm.
10. Concrete Exposure Class to be A-3
11. Min. Stripping Strength to be 15MPa
12. All Form Finish to be Standard Grade
13. All Unformed Finish to be Steel Trowelled Finish or Wood Float Finish
14. Lifting cable and accessories to meet the strength requirement in lifting detail
15. Hoisting and Rigging system to meet WORK SAFE BC OHS Regulation Guideline Part 14/15



Description:
1372ID x 1219H Manhole Base

54"ID x 48"H Manhole Base 5502 #
Project:

Drawn : D.L	Date : 07/03/2016	Catalog No. 5448B
Approved : V.W.	Load Rating: H20 RATED	Dwg. No. 54-06
Rev. No. B	Scale : As Shown	Sheet No. 1 OF 1