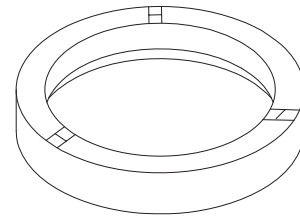
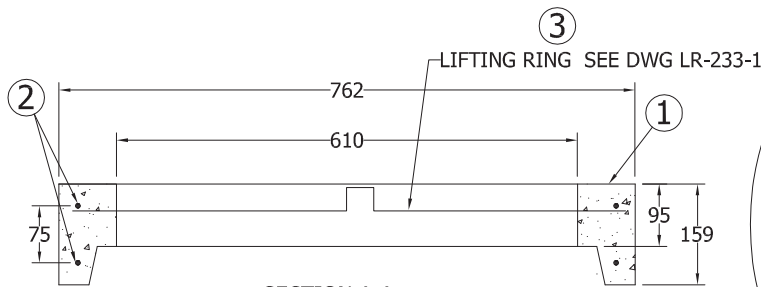


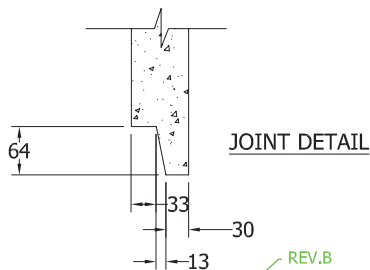
PLAN VIEW
SCALE 1:10



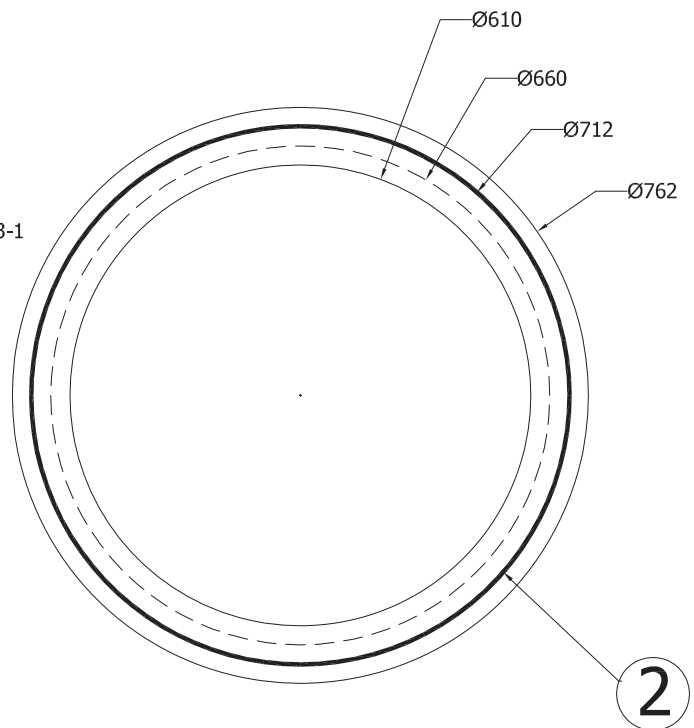
3D VIEW



SECTION A-A
SCALE 1:10



JOINT DETAIL



REINFORCEMENT PLAN VIEW
SCALE 1:10

Specification and General Notes:

1. Manhole design/manufacture to ASTM C478M Specification.
2. Concrete testing to current version of ASTM C497/CSA 23.1&2.
3. Min. concrete compressive strength 30 MPa with Max. W/C ratio of 0.5
4. Gasket to ASTM C-443 specification (by others).
5. Concrete cover to be Min.25mm.
6. All dimensions to be millimeter.
7. Welded wire mesh overlap to be 300mm.
8. Manhole design and construction to MMCD manhole specification section 02725.
9. Manufacturing tolerance to be +/- 5mm.
10. Concrete Exposure Class to be A-3
11. Min. Stripping Strength to be 15MPa
12. All Form Finish to be Standard Grade
13. All Unformed Finish to be Steel Trowelled Finish or Wood Float Finish
14. Lifting cable and accessories to meet the strength requirement in lifting detail
15. Hoisting and Rigging system to meet WORK SAFE BC OHS Regulation Guideline Part 14/15



Description:

610 ID Lid Hatch Opening-FEMALE

24"ID Lid Hatch Opening

Project:

Drawn :

D.L

Date :

22/08/2016

Catalog No.

24DLROF

Approved :

Load Rating:

V.W.

N/A

Dwg. No.

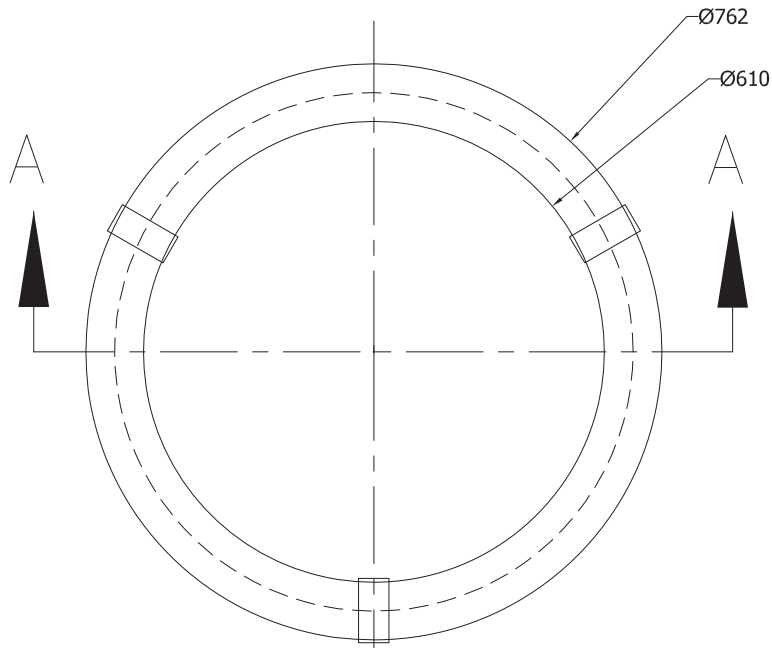
24-16

Rev. No.
B

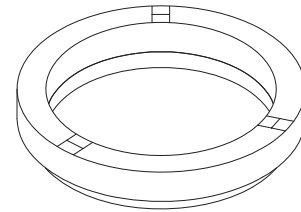
Scale :
As Shown

Sheet No.

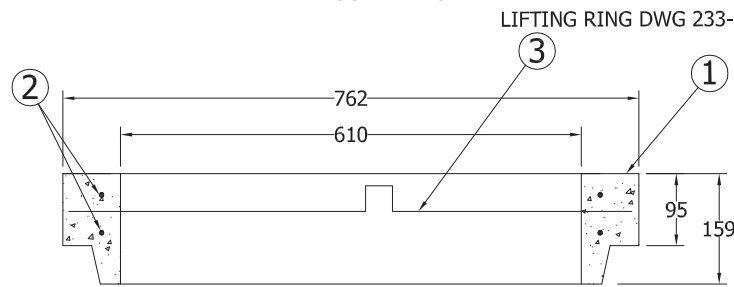
1 OF 1



PLAN VIEW
SCALE 1:10

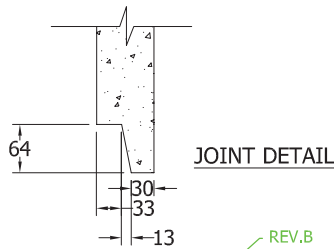


3D VIEW

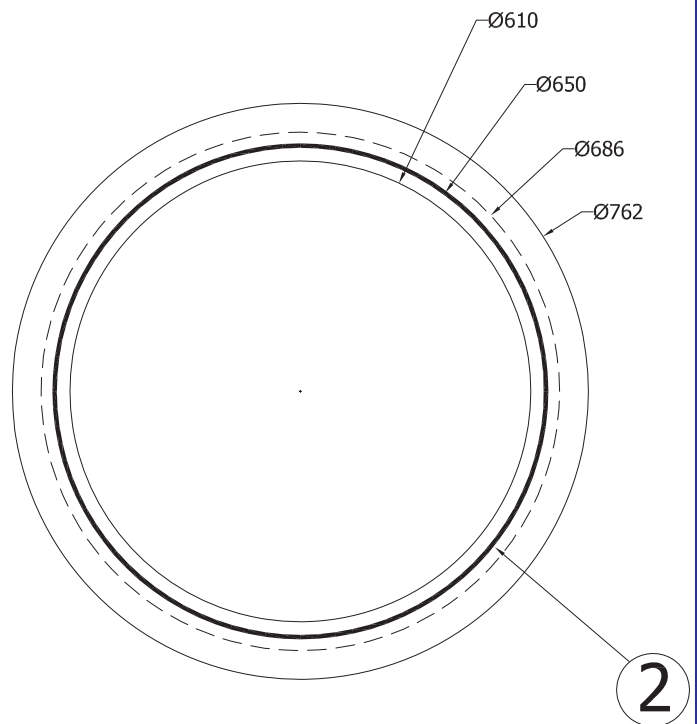


SECTION A-A
SCALE 1:10

LIFTING RING DWG 233-1



JOINT DETAIL



REINFORCEMENT PLAN VIEW
SCALE 1:10

Specification and General Notes:

1. Manhole design/manufacture to ASTM C478M Specification.
2. Concrete testing to current version of ASTM C497/CSA 23.1&2.
3. Min. concrete compressive strength 30 MPa with Max. W/C ratio of 0.5
4. Gasket to ASTM C-443 specification (by others).
5. Concrete cover to be Min.25mm.
6. All dimensions to be millimeter.
7. Welded wire mesh overlap to be 300mm.
8. Manhole design and construction to MMCD manhole specification section 02725.
9. Manufacturing tolerance to be +/- 5mm.
10. Concrete Exposure Class to be A-3
11. Min. Stripping Strength to be 15MPa
12. All Form Finish to be Standard Grade
13. All Unformed Finish to be Steel Trowelled Finish or Wood Float Finish
14. Lifting cable and accessories to meet the strength requirement in lifting detail
15. Hoisting and Rigging system to meet WORK SAFE BC OHS Regulation Guideline Part 14/15



Description:

610 ID Lid Hatch Opening MALE

24"ID Lid Hatch Opening

Project:

Drawn :

D.L

Date :

22/08/2016

Catalog No.

24DLROM

Approved :

V.W.

Load Rating:

N/A

Dwg. No.

24-15

Rev. No.

B

Scale :

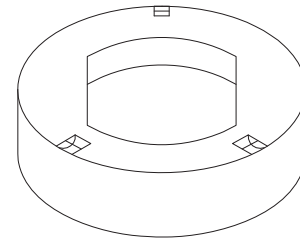
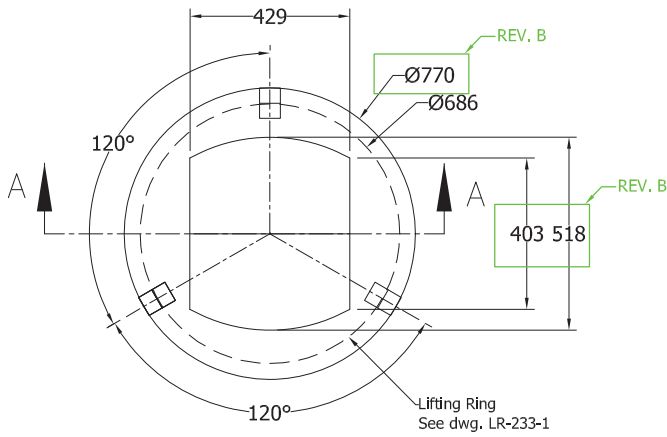
As Shown

Sheet No.

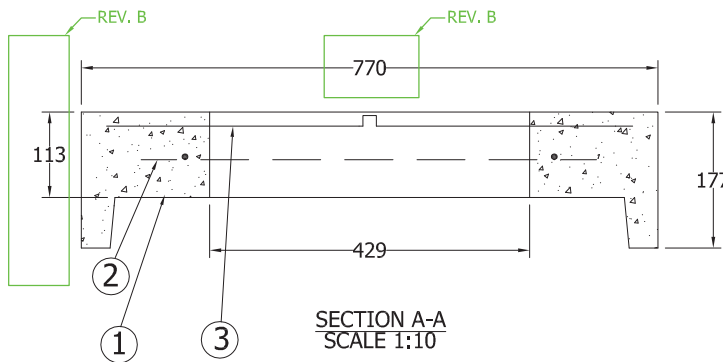
1 OF 1

This drawing is the property of the Diamond Precast Concrete. All information contained herein is confidential and may not be used in whole or in part without written permission from the owner.

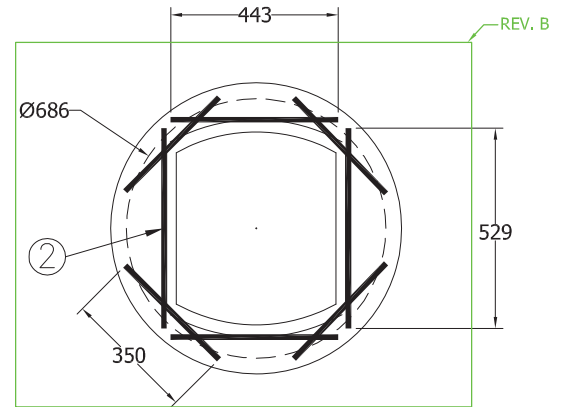
24DLCGF



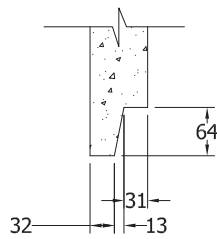
3D VIEW



SECTION A-A
SCALE 1:10



BASE REINFORCEMENT PLAN VIEW
SCALE 1:20



JOINT DETAIL

Specification and General Notes:

1. Manhole design/manufacture to ASTM C478M Specification
2. Concrete testing to current version of ASTM C497/CSA 23.1&2.
3. Min. concrete compressive strength 30 MPa with Max. W/C ratio of 0.5
4. Gasket to ASTM C-443 specification (by others).
5. Concrete cover to be Min.25mm.
6. All dimensions to be millimeter.
7. Welded wire mesh overlap to be 300mm.
8. Manhole design and construction to MMCD manhole specification section 02725.
9. Manufacturing tolerance to be +/- 5mm.
10. Concrete Exposure Class to be A-3
11. Min. Stripping Strength to be 15MPa
12. All Form Finish to be Standard Grade
13. All Unformed Finish to be Steel Trowelled Finish or Wood Float Finish
14. Lifting cable and accessories to meet the strength requirement in lifting detail
15. Hoisting and Rigging system to meet WORK SAFE BC OHS Regulation Guideline Part 14/15



Description:
762 OD Donut Lid Curb & Gutter - Female

24"ID Donut Lid Curb % Gutter#185

Project:

D.L. 08/07/2016
Approved : Load Rating:
V.W. H20 RATED
Rev. No. B Scale :
As Shown

Catalog No.
24DLCGF

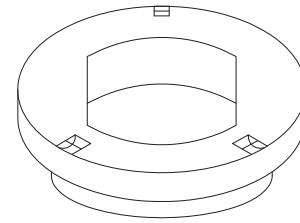
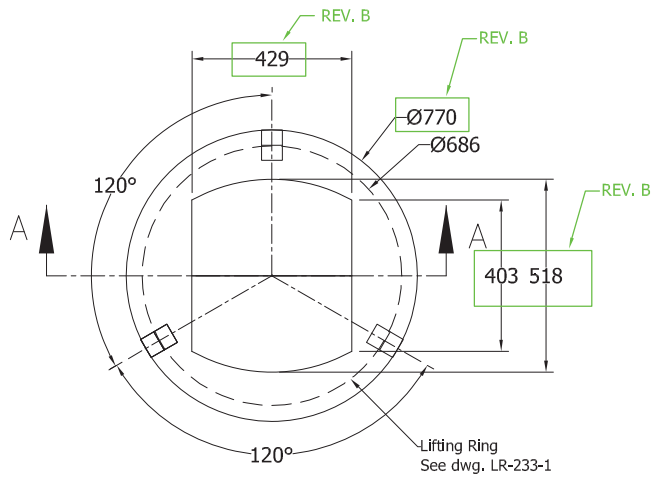
Dwg. No.
24-14

7520 Conrad Street Burnaby, B.C. V5A 2H7 Phone : 604-415-5181 Fax : 604-415-5185
www.diamondprecast.com

This drawing is the property of the Diamond Precast Concrete. All information contained herein is confidential and may not be used in whole or in part without written permission from the owner

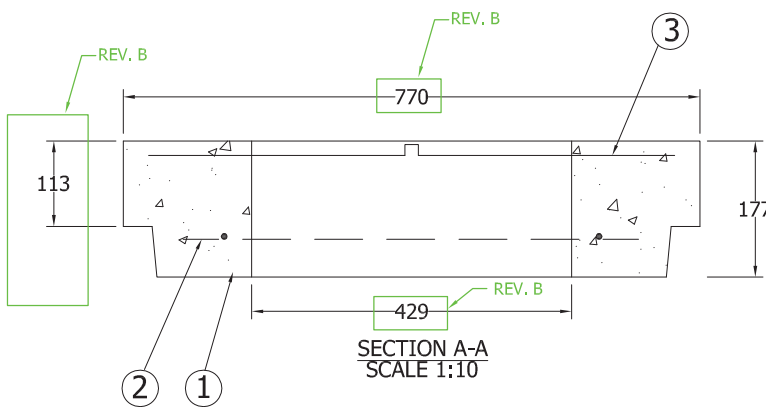
Sheet No.
1 OF 1

24DLCGM

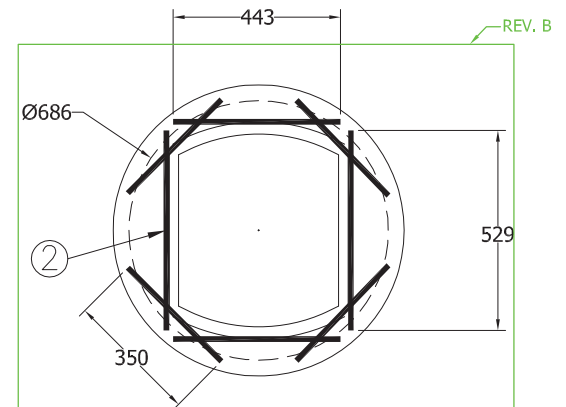


3D VIEW

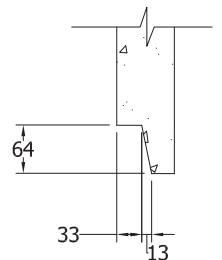
PLAN VIEW
SCALE 1:20



SECTION A-A
SCALE 1:10



BASE REINFORCEMENT PLAN VIEW
SCALE 1:20



JOINT DETAIL

Specification and General Notes:

1. Manhole design/manufacture to ASTM C478M Specification
2. Concrete testing to current version of ASTM C497/CSA 23.1&2.
3. Min. concrete compressive strength 30 MPa with Max. W/C ratio of 0.5
4. Gasket to ASTM C-443 specification (by others).
5. Concrete cover to be Min.25mm.
6. All dimensions to be millimeter.
7. Welded wire mesh overlap to be 300mm.
8. Manhole design and construction to MMCD manhole specification section 02725.
9. Manufacturing tolerance to be +/- 5mm.
10. Concrete Exposure Class to be A-3
11. Min. Stripping Strength to be 15MPa
12. All Form Finish to be Standard Grade
13. All Unformed Finish to be Steel Trowelled Finish or Wood Float Finish
14. Lifting cable and accessories to meet the strength requirement in lifting detail
15. Hoisting and Rigging system to meet WORK SAFE BC OHS Regulation Guideline Part 14/15



Description:

762 OD Donut Lid Curb & Gutter - Male

24"ID Donut Lid Curb & Gutter#185

Project:

D.L.	08/07/2016
Approved :	Load Rating:
V.W.	H20 RATED
Rev. No. B	Scale : As Shown

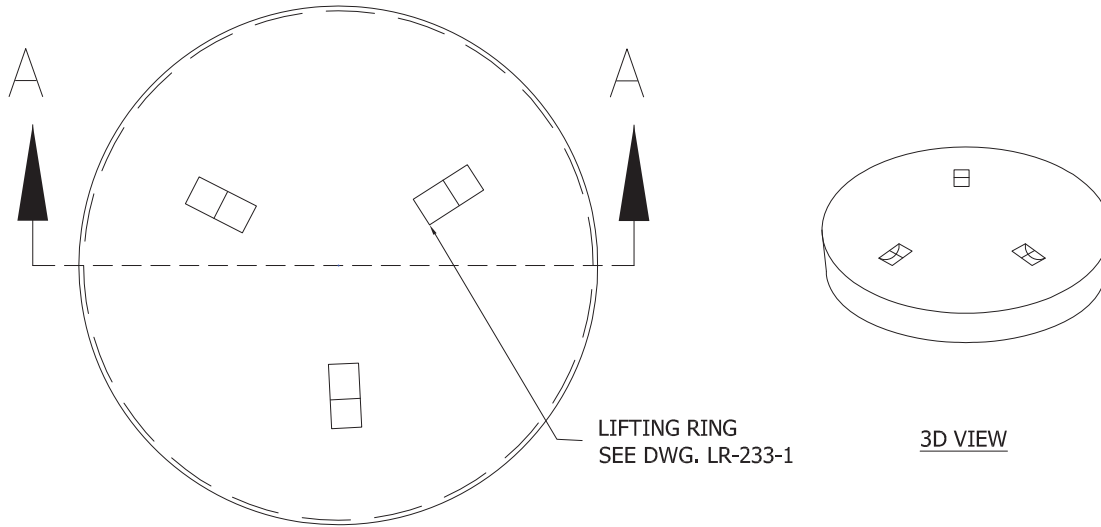
Catalog No.
24DLCGM

Dwg. No.
24-13

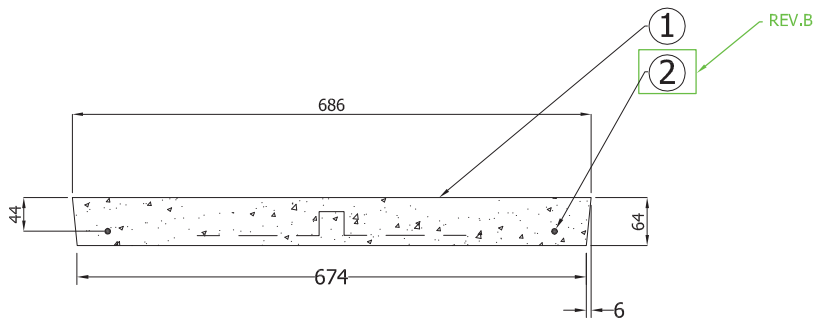
7520 Conrad Street Burnaby, B.C. V5A 2H7 Phone : 604-415-5181 Fax : 604-415-5185
www.diamondprecast.com

This drawing is the property of the Diamond Precast Concrete. All information contained herein is confidential and may not be used in whole or in part without written permission from the owner

Sheet No.
1 OF 1



PLAN VIEW
SCALE 1:10



SECTION A-A
SCALE 1:10

Specification and General Notes:

1. Manhole design/manufacture to ASTM C478M Specification.
2. Concrete testing to current version of ASTM C497/CSA 23.1&2.
3. Min. concrete compressive strength 30 MPa with Max. W/C ratio of 0.5
4. Gasket to ASTM C-443 specification (by others).
5. Concrete cover to be Min.25mm.
6. All dimensions to be millimeter.
7. Welded wire mesh overlap to be 300mm.
8. Manhole design and construction to MMCD manhole specification section 02725.
9. Manufacturing tolerance to be +/- 5mm.
10. Concrete Exposure Class to be A-3
11. Min. Stripping Strength to be 15MPa
12. All Form Finish to be Standard Grade
13. All Unformed Finish to be Steel Trowelled Finish or Wood Float Finish
14. Lifting cable and accessories to meet the strength requirement in lifting detail
15. Hoisting and Rigging system to meet WORK SAFE BC OHS Regulation Guideline Part 14/15



Description:

686 OD Concrete Lid Solid

24"ID Concrete Lid Solid

Project:

Drawn :

D.L

Date :

22/08/2016

Catalog No.

24CLS

Approved :

V.W.

Load Rating:

N/A

Dwg. No.

24-12

Rev. No.

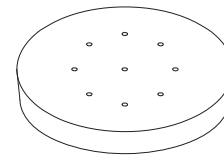
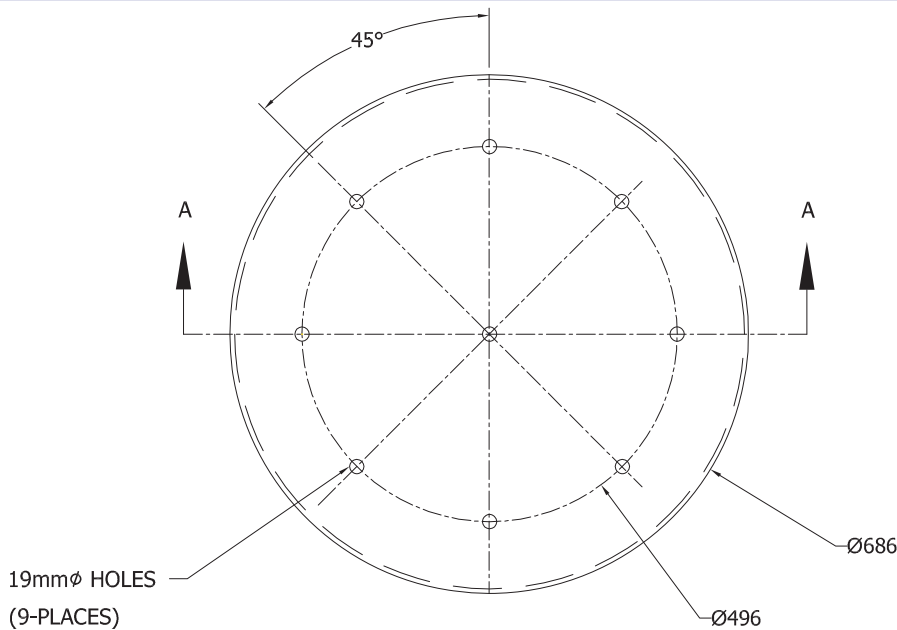
B

Scale :

As Shown

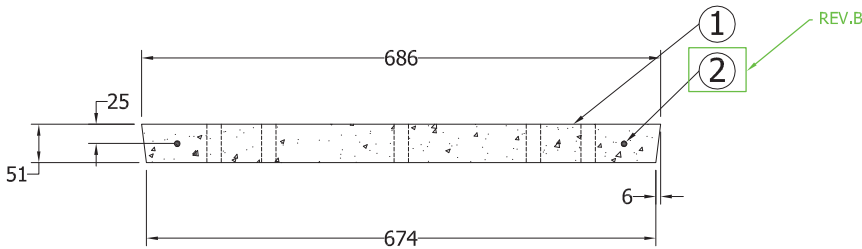
Sheet No.

1 OF 1



3D VIEW

PLAN VIEW
SCALE 1:10



SECTION A-A
SCALE 1:10

Specification and General Notes:

1. Manhole design/manufacture to ASTM C478M Specification.
2. Concrete testing to current version of ASTM C497/CSA 23.1&2.
3. Min. concrete compressive strength 30 MPa with Max. W/C ratio of 0.5
4. Gasket to ASTM C-443 specification (by others).
5. Concrete cover to be Min.25mm.
6. All dimensions to be millimeter.
7. Welded wire mesh overlap to be 300mm.
8. Manhole design and construction to MMCD manhole specification section 02725.
9. Manufacturing tolerance to be +/- 5mm.
10. Concrete Exposure Class to be A-3
11. Min. Stripping Strength to be 15MPa
12. All Form Finish to be Standard Grade
13. All Unformed Finish to be Steel Trowelled Finish or Wood Float Finish
14. Lifting cable and accessories to meet the strength requirement in lifting detail
15. Hoisting and Rigging system to meet WORK SAFE BC OHS Regulation Guideline Part 14/15



Description:

686 OD Concrete Lid Perforated

24"ID Concrete Lid Perforated

Project:

Drawn :

D.L

Date :

22/08/2016

Catalog No.

24CLP

Approved :

Load Rating:

V.W.

N/A

Dwg. No.

24-11

Rev. No.

Scale :

B

As Shown

Sheet No.

1 OF 1