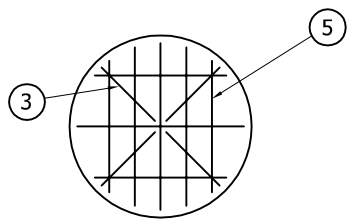
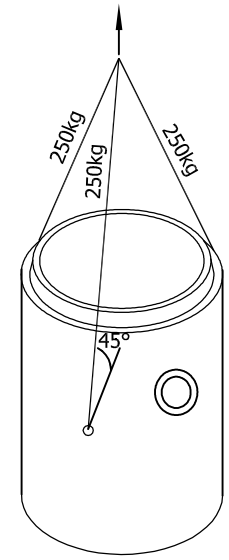


SECTION A-A
SCALE 1:30

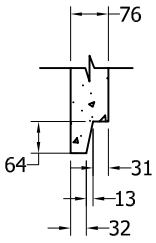
PLAN VIEW
SCALE 1:30



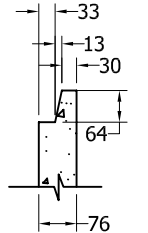
BASE REINFORCING



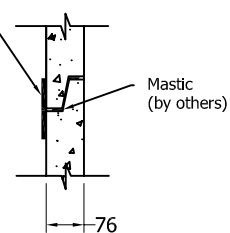
3D VIEW



TONGUE & GROOVE DETAIL
SCALE 1:15



External Mastic Wrap
Recommended
(by others)



SUGGESTED JOINT DETAIL
SCALE 1:15

- Specification and General Notes:**
1. Manhole design/manufacture to ASTM C478M Specification.
 2. Concrete testing to current version of ASTM C497/CSA A23.1&2.
 3. Min. concrete compressive strength 30 MPa with Max. W/C ratio of 0.5
 4. Gasket to ASTM C-443 specification (by others).
 5. Concrete cover to be Min.25mm.
 6. All dimensions to be millimeter.
 7. Welded wire mesh overlap to be 300mm.
 8. Manhole design and construction to MMCD manhole specification section 02725.
 9. Manufacturing tolerance to be +/- 5mm.
 10. Concrete Exposure Class to be A-3
 11. Min. Stripping Strength to be 15MPa
 12. All Form Finish to be Standard Grade
 13. All Unformed Finish to be Steel Trowelled Finish or Wood Float Finish
 14. Lifting cable and accessories to meet the strength requirement in lifting detail
 15. Hoisting and Rigging system to meet WORK SAFE BC OHS Regulation Guideline Part 14/15

Bill of Materials					
Item	Description	Vol. m ³	A. m ²	Mas. Kg	Qty.
1	Concrete	0.22	-	521.4	-
2	Ø1" LIFTING HOLES	-	-	-	3
3	D5 Dowel H300 V300	-	-	1.49	4
4	Ø 6.36mm HOOP STEEL	-	-	0.48	6
5	D5 203X102	-	-	-	-



Description:
610ID x 1219H Sump/Catch Basin TT (TPL)
24"ID x 48"H Catch Basin 1155 #

Project:

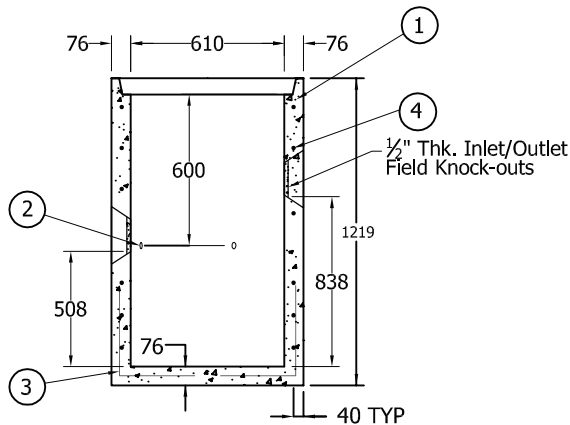
Drawn :
D.L
Date :
27/10/2017

Approved :
V.W.
Load Rating:
N/A

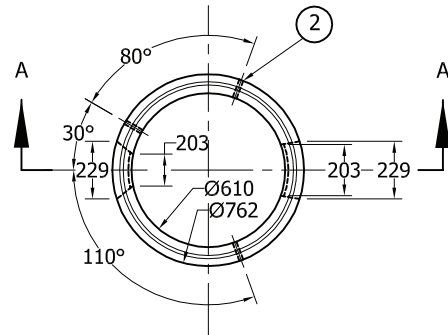
Rev. No.
C
Scale :
As Shown

Catalog No.
2448CBTT

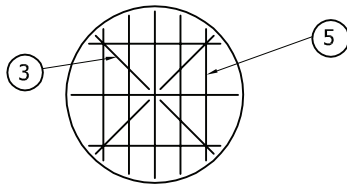
Dwg. No.
24-10



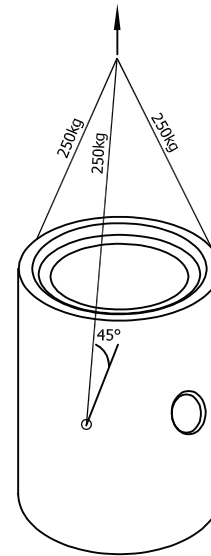
SECTION A-A
SCALE 1:30



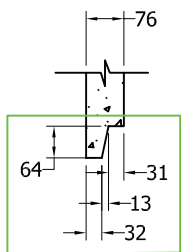
PLAN VIEW
SCALE 1:30



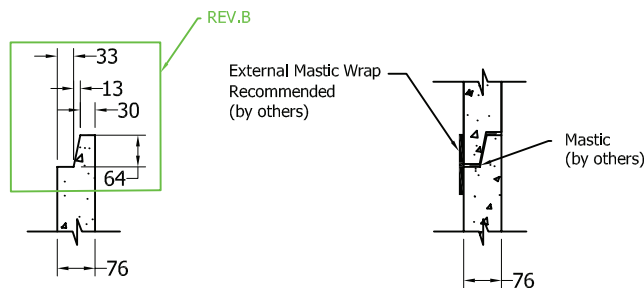
BASE REINFORCING



3D VIEW



TONGUE & GROOVE DETAIL
SCALE 1 : 15



SUGGESTED JOINT DETAIL
SCALE 1 : 15

Specification and General Notes:

1. Manhole design/manufacture to ASTM C478M Specification.
2. Concrete testing to ASTM C497/CSA 23.1 & 2-09.
3. Min. concrete compressive strength 30 MPa with Max. W/C ratio of 0.5
4. Gasket to ASTM C-443 specification (by others).
5. Concrete cover to be Min.25mm.
6. All dimensions to be millimeter.
7. Welded wire mesh overlap to be 300mm.
8. Manhole design and construction to MMCD manhole specification section 02725.
9. Manufacturing tolerance to be +/- 5mm.
10. Concrete Exposure Class to be A-3
11. Min. Stripping Strength to be 15MPa
12. All Form Finish to be Standard Grade
13. All Unformed Finish to be Steel Trowelled Finish or Wood Float Finish
14. Lifting cable and accessories to meet the strength requirement in lifting detail
15. Hoisting and Rigging system to meet WORK SAFE BC OHS Regulation Guideline Part 14/15

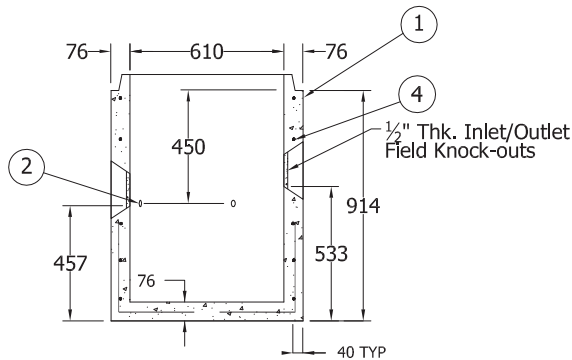


Description:
610ID x 1219H Sump/Catch Basin GT(TPL)

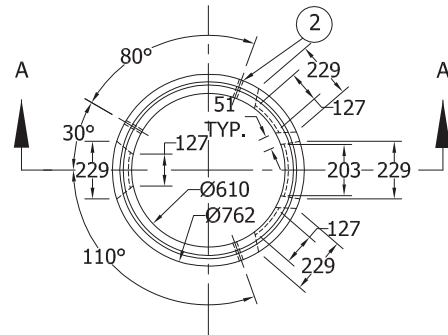
Drawn : D.L.	Date : 22/08/2016	Catalog No. 2448CBS
Approved : V.W.	Load Rating: N/A	
Rev. No. B	Scale : As Shown	Dwg. No. 24-09

24"ID x 48"H Catch Basin 1155 #

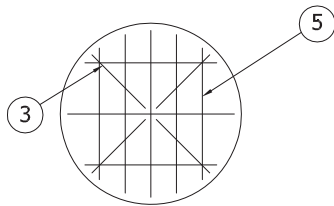
Project:



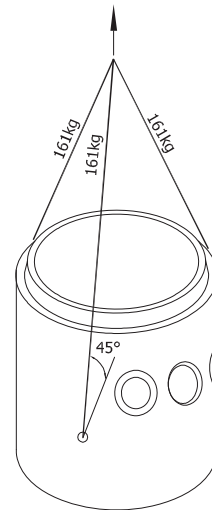
SECTION A-A
SCALE 1:30



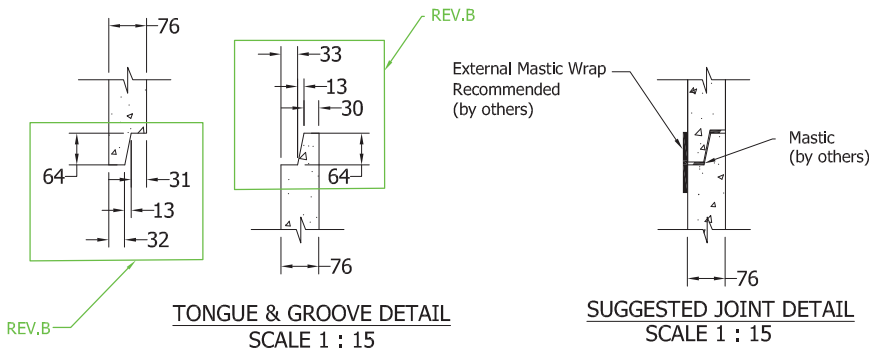
PLAN VIEW
SCALE 1:30



BASE REINFORCING



3D VIEW



Specification and General Notes:

1. Manhole design/manufacture to ASTM C478M Specification.
2. Concrete testing to current version of ASTM C497/CSA 23.1&2.
3. Min. concrete compressive strength 30 MPa with Max. W/C ratio of 0.5
4. Gasket to ASTM C-443 specification (by others).
5. Concrete cover to be Min.25mm.
6. All dimensions to be millimeter.
7. Welded wire mesh overlap to be 300mm.
8. Manhole design and construction to MMCD manhole specification section 02725.
9. Manufacturing tolerance to be +/- 5mm.
10. Concrete Exposure Class to be A-3
11. Min. Stripping Strength to be 15MPa
12. All Form Finish to be Standard Grade
13. All Unformed Finish to be Steel Trowelled Finish or Wood Float Finish
14. Lifting cable and accessories to meet the strength requirement in lifting detail
15. Hoisting and Rigging system to meet WORK SAFE BC OHS Regulation Guideline Part 14/15

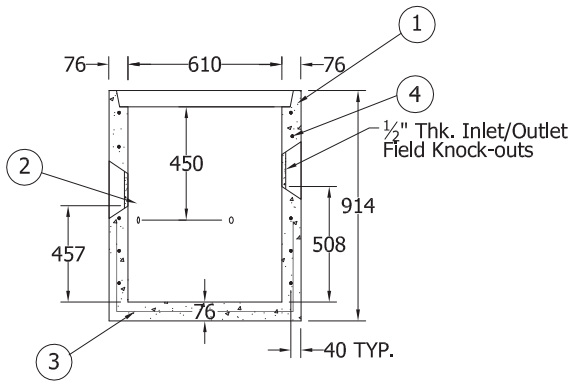


Description:
610ID x 914H Sump/Catch Basin TT (TPL)

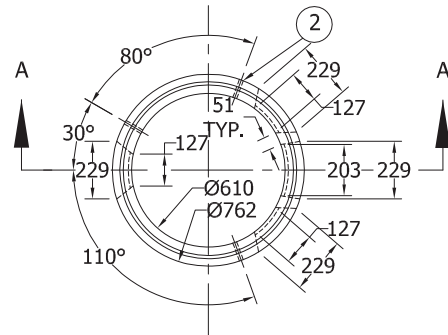
24"ID x 36"H Catch Basin #895

Project:

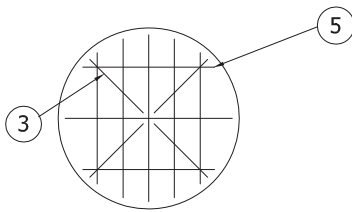
Drawn : D.L.	Date : 22/08/2016	Catalog No. 2436CBTT
Approved : V.W.	Load Rating: N/A	Dwg. No. 24-06
Rev. No. B	Scale : As Shown	Sheet No. 1 OF 1



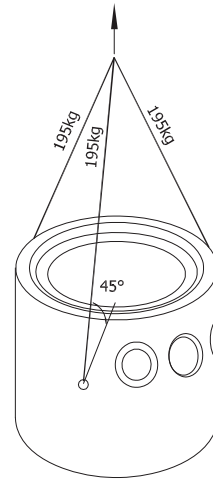
SECTION A-A
SCALE 1:30



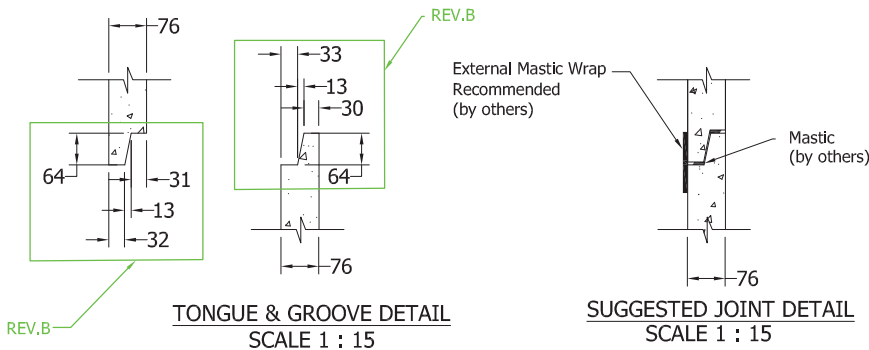
PLAN VIEW
SCALE 1:30



BASE REINFORCING



3D VIEW



TONGUE & GROOVE DETAIL
SCALE 1 : 15

SUGGESTED JOINT DETAIL
SCALE 1 : 15

Specification and General Notes:

1. Manhole design/manufacture to ASTM C478M Specification.
2. Concrete testing to current version of ASTM C497/CSA 23.1&2.
3. Min. concrete compressive strength 30 MPa with Max. W/C ratio of 0.5
4. Gasket to ASTM C-443 specification (by others).
5. Concrete cover to be Min.25mm.
6. All dimensions to be millimeter.
7. Welded wire mesh overlap to be 300mm.
8. Manhole design and construction to MMCD manhole specification section 02725.
9. Manufacturing tolerance to be +/- 5mm.
10. Concrete Exposure Class to be A-3
11. Min. Stripping Strength to be 15MPa
12. All Form Finish to be Standard Grade
13. All Unformed Finish to be Steel Trowelled Finish or Wood Float Finish
14. Lifting cable and accessories to meet the strength requirement in lifting detail
15. Hoisting and Rigging system to meet WORK SAFE BC OHS Regulation Guideline Part 14/15

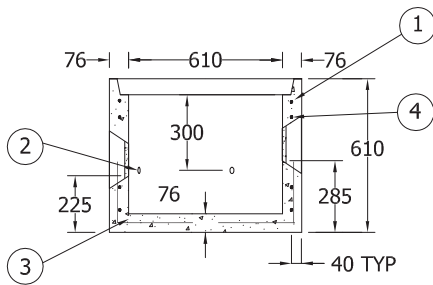


Description:
610ID x 914H Sump/Catch Basin GT (TPL)

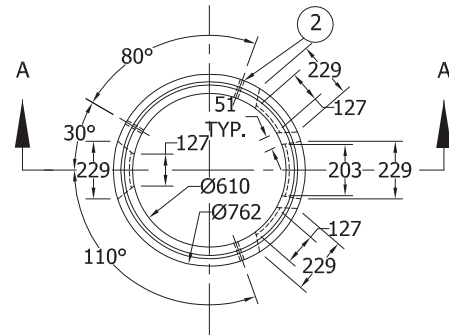
24"ID x 36"H Catch Basin #895

Project:

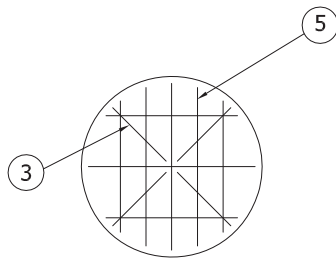
Drawn : D.L.	Date : 22/08/2016	Catalog No. 2436CBS
Approved : V.W.	Load Rating: N/A	
Rev. No. B	Scale : As Shown	Dwg. No. 24-05



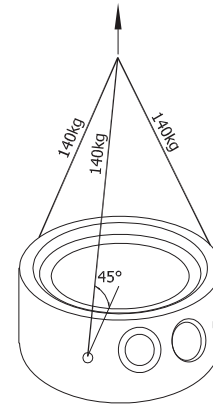
SECTION A-A
SCALE 1:30



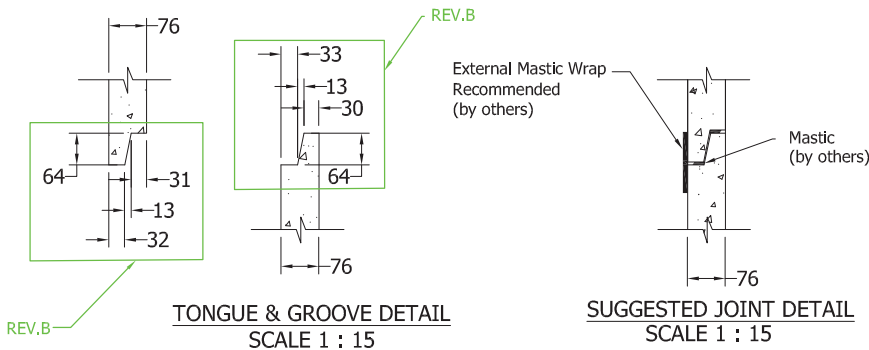
PLAN VIEW
SCALE 1:30



BASE REINFORCING



3D VIEW



TONGUE & GROOVE DETAIL
SCALE 1 : 15

SUGGESTED JOINT DETAIL
SCALE 1 : 15

Specification and General Notes:

1. Manhole design/manufacture to ASTM C478M Specification.
2. Concrete testing to current version of ASTM C497/CSA 23.1&2.
3. Min. concrete compressive strength 30 MPa with Max. W/C ratio of 0.5
4. Gasket to ASTM C-443 specification (by others).
5. Concrete cover to be Min.25mm.
6. All dimensions to be millimeter.
7. Welded wire mesh overlap to be 300mm.
8. Manhole design and construction to MMCD manhole specification section 02725.
9. Manufacturing tolerance to be +/- 5mm.
10. Concrete Exposure Class to be A-3
11. Min. Stripping Strength to be 15MPa
12. All Form Finish to be Standard Grade
13. All Unformed Finish to be Steel Trowelled Finish or Wood Float Finish
14. Lifting cable and accessories to meet the strength requirement in lifting detail
15. Hoisting and Rigging system to meet WORK SAFE BC OHS Regulation Guideline Part 14/15



Description:
610ID x 610H Sump/Catch Basin GT (TPL)

24"ID x 24"H Catch Basin #636

Project:

Drawn : D.L.	Date : 22/08/2016	Catalog No. 2424CBS
Approved : V.W.	Load Rating: N/A	
Rev. No. B	Scale : As Shown	Dwg. No. 24-03

7520 Conrad Street Burnaby, B.C. V5A 2H7 Phone : 604-415-5181 Fax : 604-415-5185

www.diamondprecast.com

This drawing is the property of the Diamond Precast Concrete. All information contained herein is confidential and may not be used in whole or in part without written permission from the owner

Sheet No.
1 OF 1